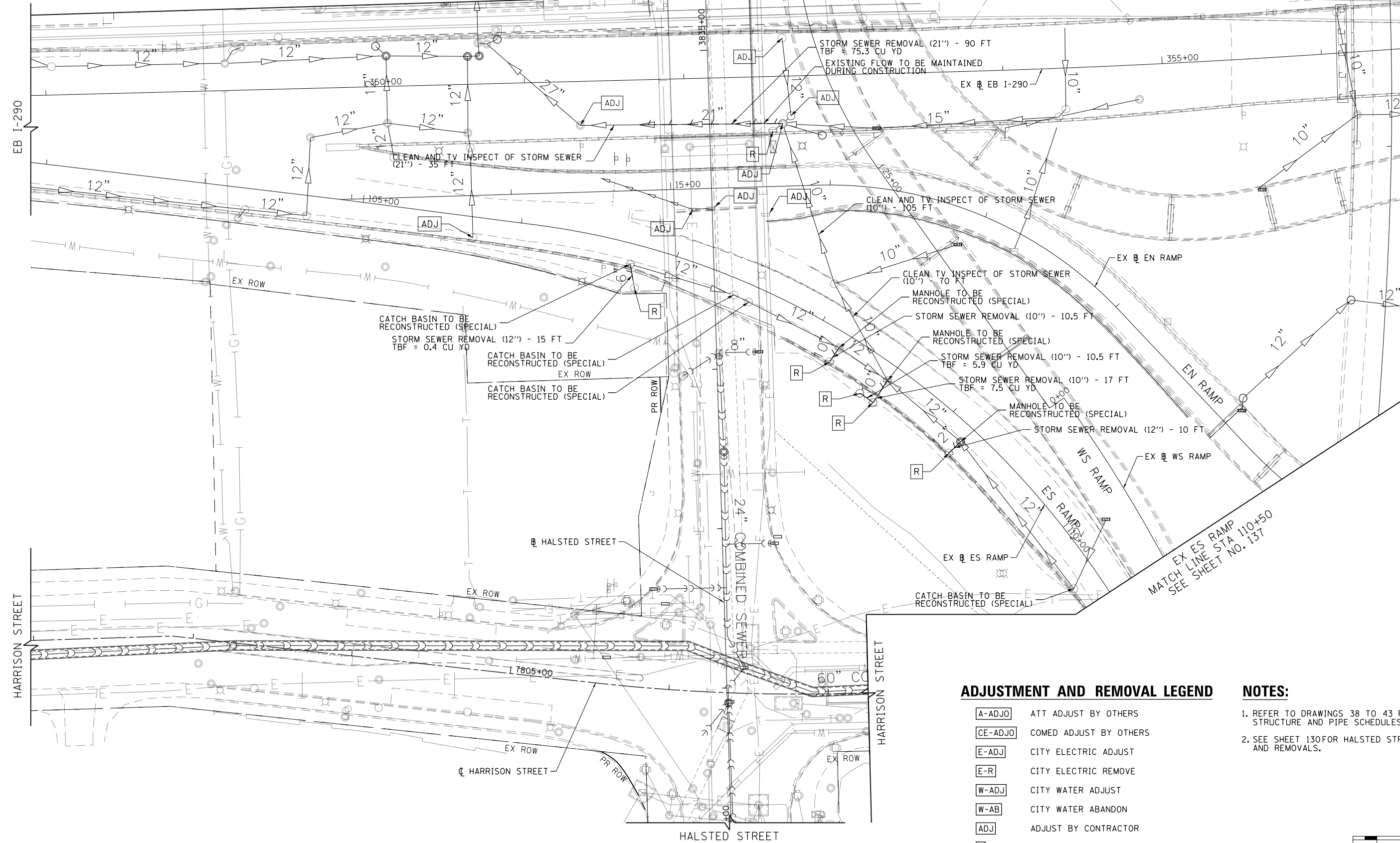
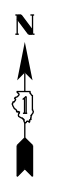


HALSTED STREET
MATCH LINE STA 3835+35
SEE SHEET NO. 131

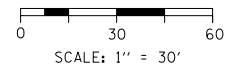


ADJUSTMENT AND REMOVAL LEGEND

- [A-ADJO] ATT ADJUST BY OTHERS
- [CE-ADJO] COMED ADJUST BY OTHERS
- [E-ADJ] CITY ELECTRIC ADJUST
- [E-R] CITY ELECTRIC REMOVE
- [W-ADJ] CITY WATER ADJUST
- [W-AB] CITY WATER ABANDON
- [ADJ] ADJUST BY CONTRACTOR
- [R] REMOVAL BY CONTRACTOR

NOTES:

1. REFER TO DRAWINGS 38 TO 43 FOR DRAINAGE STRUCTURE AND PIPE SCHEDULES.
2. SEE SHEET 130 FOR HALSTED STREET DRAINAGE AND REMOVALS.



FILE PATH = p:\388035\p\m\l\escomon\me\local\p\w\ec\000\Documents\01_Americas\Transportation\60269938_Circle\Phase_1\1000_CAD\005_Roadway_Sheets\60W26-Sht-Drain-03.dgn



D160W26-Sht-Drain-03.dgn
USER NAME = jslavanne
PLOT SCALE = 30.0000' / in.
PLOT DATE = 9/13/2013

DESIGNED - JSL	REVISED -
DRAWN - BAW	REVISED -
CHECKED - JWC	REVISED -
DATE - 9/15/13	REVISED -

**STATE OF ILLINOIS
DEPARTMENT OF TRANSPORTATION**

**DRAINAGE REMOVAL PLAN
I-290**

SCALE: 1"=30' SHEET 3 OF 10 SHEETS STA. TO STA.

F.A.I. R.E. 90/94/290	SECTION 2013-008R	COUNTY COOK	TOTAL SHEETS 559	SHEET NO. 132
CONTRACT NO. 60W26				
ILLINOIS FED. AID PROJECT				