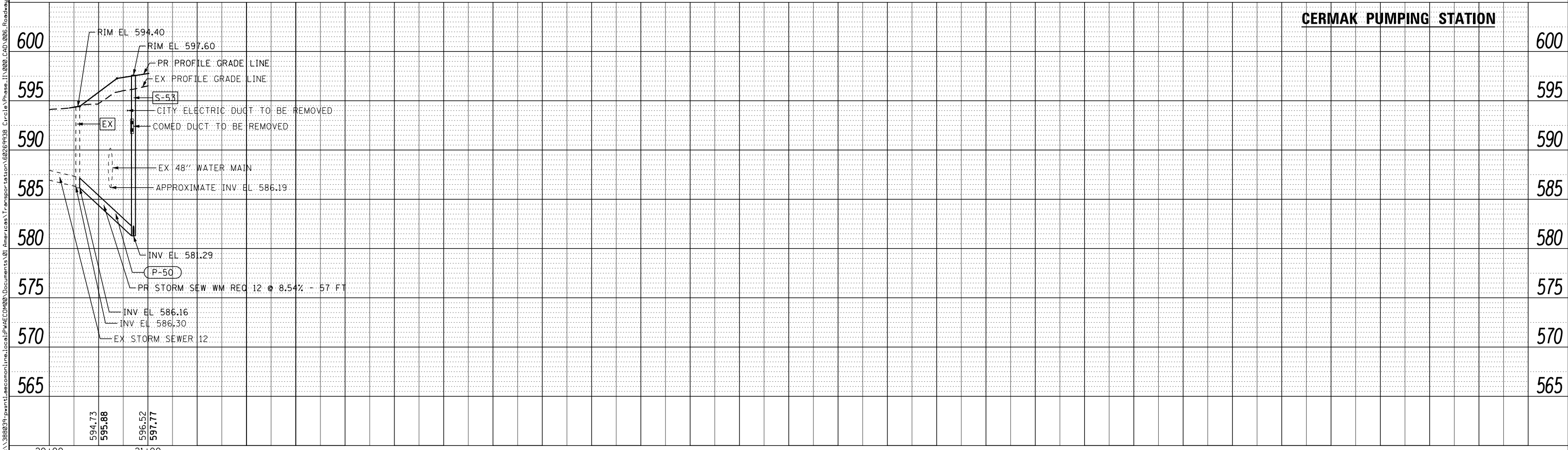


60" COMBINED SEWER

NOTES:  
 EXISTING UTILITIES SHOWN ARE FOR LATERAL REFERENCE ONLY.  
 THE CONTRACTOR IS RESPONSIBLE FOR IDENTIFYING ALL EXISTING  
 SEWERS AND UTILITIES PRIOR TO CONSTRUCTION. THE CONTRACTOR  
 SHALL REFER TO THE UTILITY LOCATION PLANS FOR ADDITIONAL  
 INFORMATION.



CERMAK PUMPING STATION



D160W26-sht-Drain-10.dgn  
 USER NAME = chitua  
 PLOT SCALE = 50.0000' / in.  
 PLOT DATE = 9/12/2013

DESIGNED - AFC  
 DRAWN - AFC  
 CHECKED - E E Y  
 DATE - 09/15/13

REVISED -  
 REVISED -  
 REVISED -  
 REVISED -

STATE OF ILLINOIS  
 DEPARTMENT OF TRANSPORTATION

DRAINAGE AND UTILITY PROFILE  
 60" COMBINED SEWER / CERMAK PUMPING STATION

SCALE: SHEET 10 OF 10 SHEETS STA. TO STA.

F.A.I. RTE.	SECTION	COUNTY	TOTAL SHEETS	SHEET NO.
90/94/290	2013-008R	COOK	559	139
CONTRACT NO. 60W26				
ILLINOIS FED. AID PROJECT				

FILE PATH = p:\388035\pmt\escomon\me\Local\PAE\CD\000\Documents\01\_Americas\Transportation\60W26\9938\_Circle\Phase\_1\000\_CAD\005\_Roadway\_Sheets\60W26-sht-Drain-10.dgn