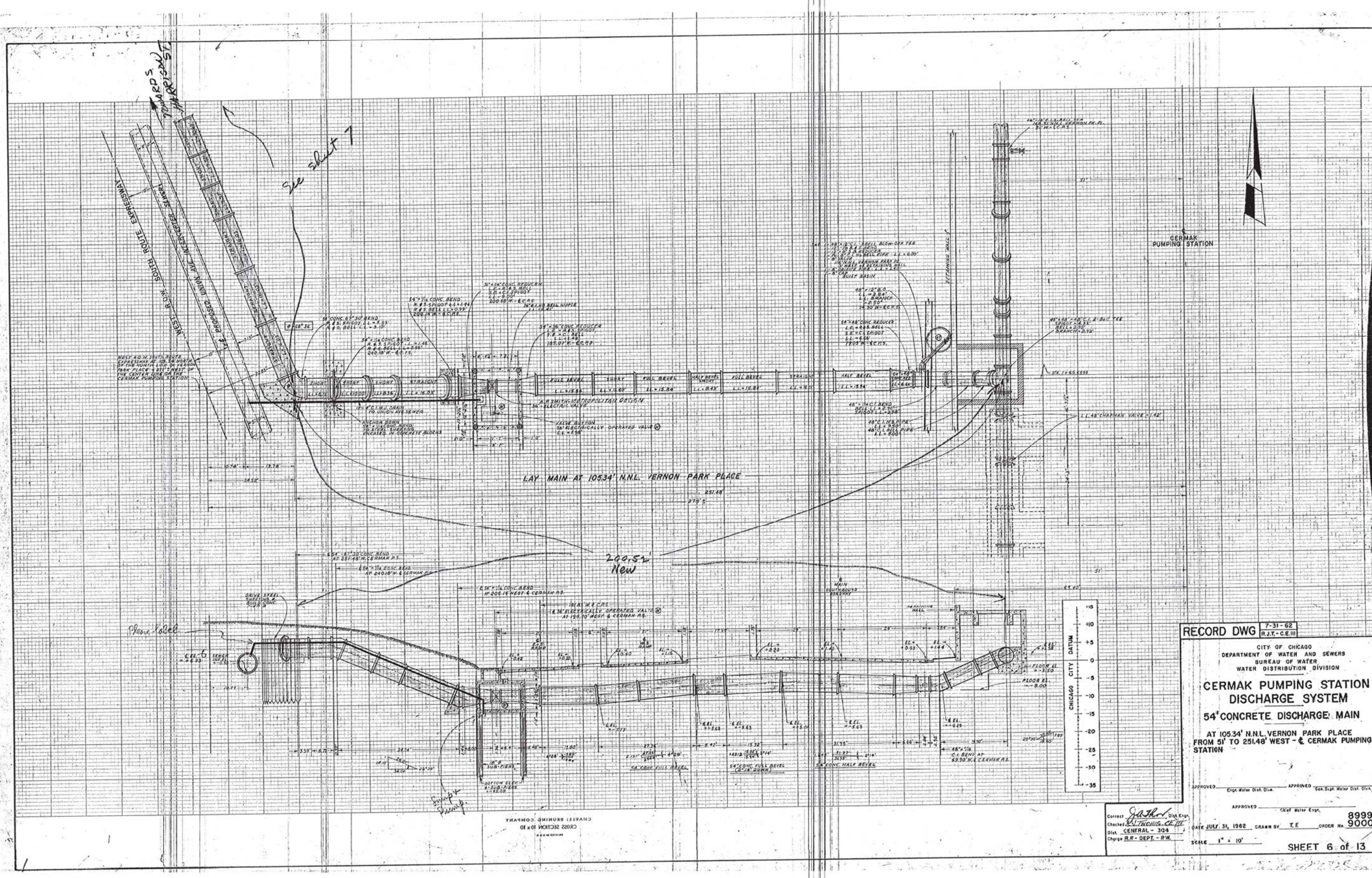


FILE PATH = p:\389039\p\m\l\ecomon\l\me\local\p\w\ec\m\0\Documents\01_Americas\Transportation\62629938_Circle\Phase_1\000_CAD\005_Roadway\Sheets\60W26_Contract\0160W26-sht-WM-12.dgn



RECORD DWG 7-31-62
R.T.-C.E.III

CITY OF CHICAGO
DEPARTMENT OF WATER AND SEWERS
BUREAU OF WATER
WATER DISTRIBUTION DIVISION

**CERMAK PUMPING STATION
DISCHARGE SYSTEM**
54" CONCRETE DISCHARGE MAIN
AT 105.34' N.N.L. VERNON PARK PLACE
FROM 51' TO 251.48' WEST - & CERMAK PUMPING STATION

APPROVED: [Signature] Chief Water Dist. Div. APPROVED: [Signature] Gen. Supt. Water Dist. Div.

APPROVED: [Signature] Chief Water Insp. ORDER NO. 8999
DATE JULY 31, 1962 DRAWN BY T.E. SHEET NO. 9000

Checked: [Signature] Charge R.E. - DEPT - RW

SCALE 1" = 10'

SHEET 6 of 13



D160W26-sht-WM-12.dgn
USER NAME = chitua
PLOT SCALE = 20.0000' / in.
PLOT DATE = 8/17/2013

DESIGNED - HHC
DRAWN - HHC
CHECKED - RBB
DATE - 8/20/13

REVISED -
REVISED -
REVISED -
REVISED -

STATE OF ILLINOIS
DEPARTMENT OF TRANSPORTATION

WATER MAIN RECORD INFORMATION

SCALE: SHEET OF SHEETS STA. TO STA.

F.A.I. R.T.	SECTION	COUNTY	TOTAL SHEETS	SHEET NO.
90/94/290	2013-008R	COOK	559	151
CONTRACT NO. 60W26				
ILLINOIS FED. AID PROJECT				

FOR INFORMATION ONLY
NOT TO SCALE