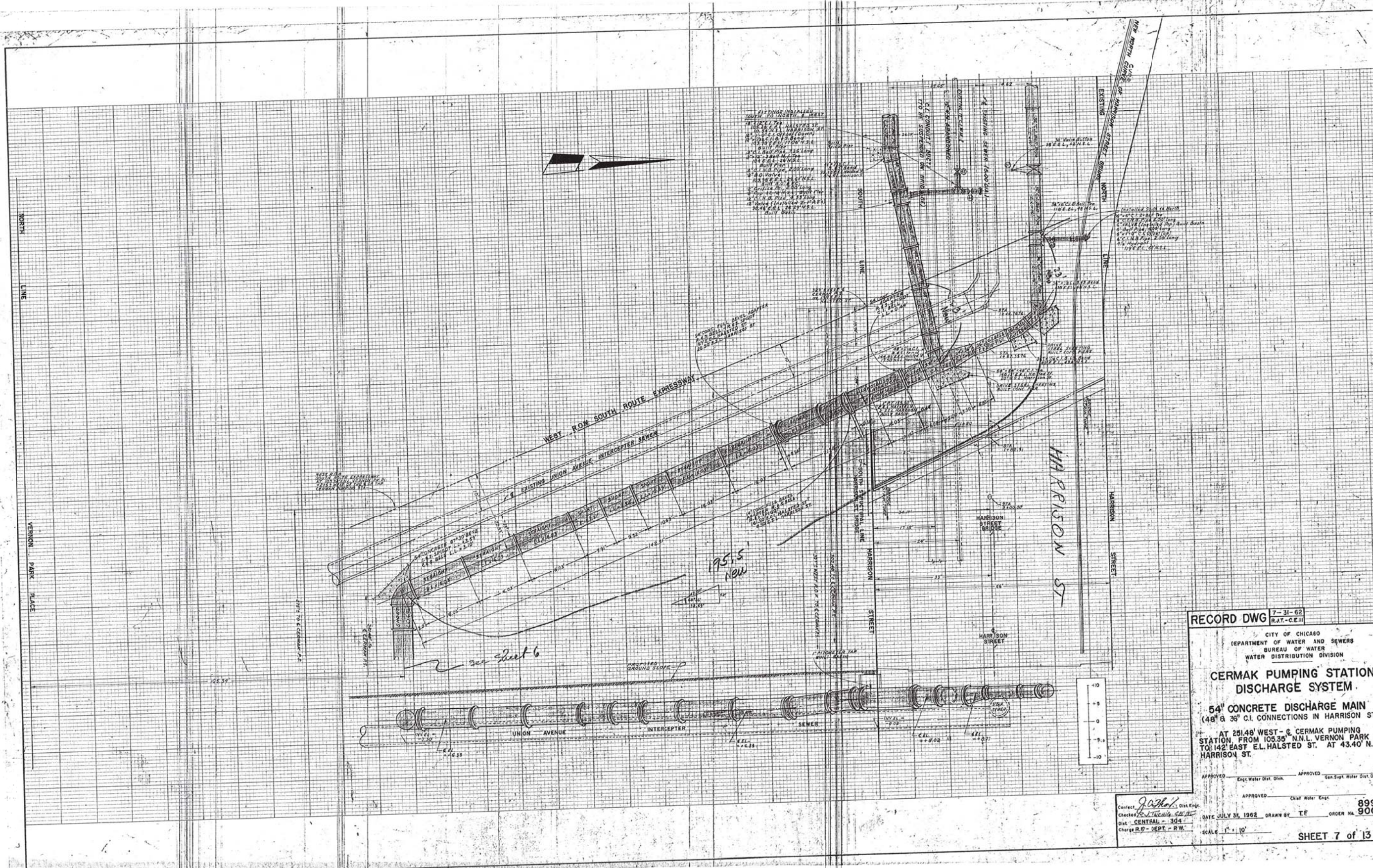


FILE PATH = p:\1\388039-p\m\l\secomon\line\local\p\w\ec\dwg\Documents\01_Americas\Transportation\66269938_Circle\Phase_1\1000_CAD\006_Roadway_Sheets\66W26-sht-WM-13.dgn



RECORD DWG 7-31-62
R.A.T.-C.E.III

CITY OF CHICAGO
DEPARTMENT OF WATER AND SEWERS
BUREAU OF WATER
WATER DISTRIBUTION DIVISION

**CERMAK PUMPING STATION
DISCHARGE SYSTEM**

54" CONCRETE DISCHARGE MAIN
(48" & 36" C.I. CONNECTIONS IN HARRISON ST.)

AT 251.48' WEST - @ CERMAK PUMPING STATION FROM 105.35' N.N.L. VERNON PARK PL. TO 142' EAST E.L. HALSTED ST. AT 43.40' N.S.L. HARRISON ST.

APPROVED: [Signature] Dist. Engr.
Checked: [Signature] Dist. Engr.
Dist. CENTRAL - 304
Charge R.P. - SEPT - R.W.

APPROVED: [Signature] Exp. Water Dist. Div.
APPROVED: [Signature] Gas Light Water Dist. Div.
APPROVED: [Signature] Dist. Engr.

DATE JULY 31, 1962 DRAWN BY TE ORDER NO. 8999
SCALE 1" = 10' CONTRACT NO. 60W26 SHEET 7 of 13



D160W26-sht-WM-13.dgn
USER NAME = chitua
PLOT SCALE = 20.0000' / in.
PLOT DATE = 8/17/2013

DESIGNED - HHC
DRAWN - HHC
CHECKED - RBB
DATE - 8/20/13

REVISED -
REVISED -
REVISED -
REVISED -

STATE OF ILLINOIS
DEPARTMENT OF TRANSPORTATION

WATER MAIN RECORD INFORMATION

SCALE: SHEET OF SHEETS STA. TO STA.

F.A.I. R.T.E.	SECTION	COUNTY	TOTAL SHEETS	SHEET NO.
90/94/290	2013-008R	COOK	559	152
				CONTRACT NO. 60W26

ILLINOIS FED. AID PROJECT

FOR INFORMATION ONLY
NOT TO SCALE