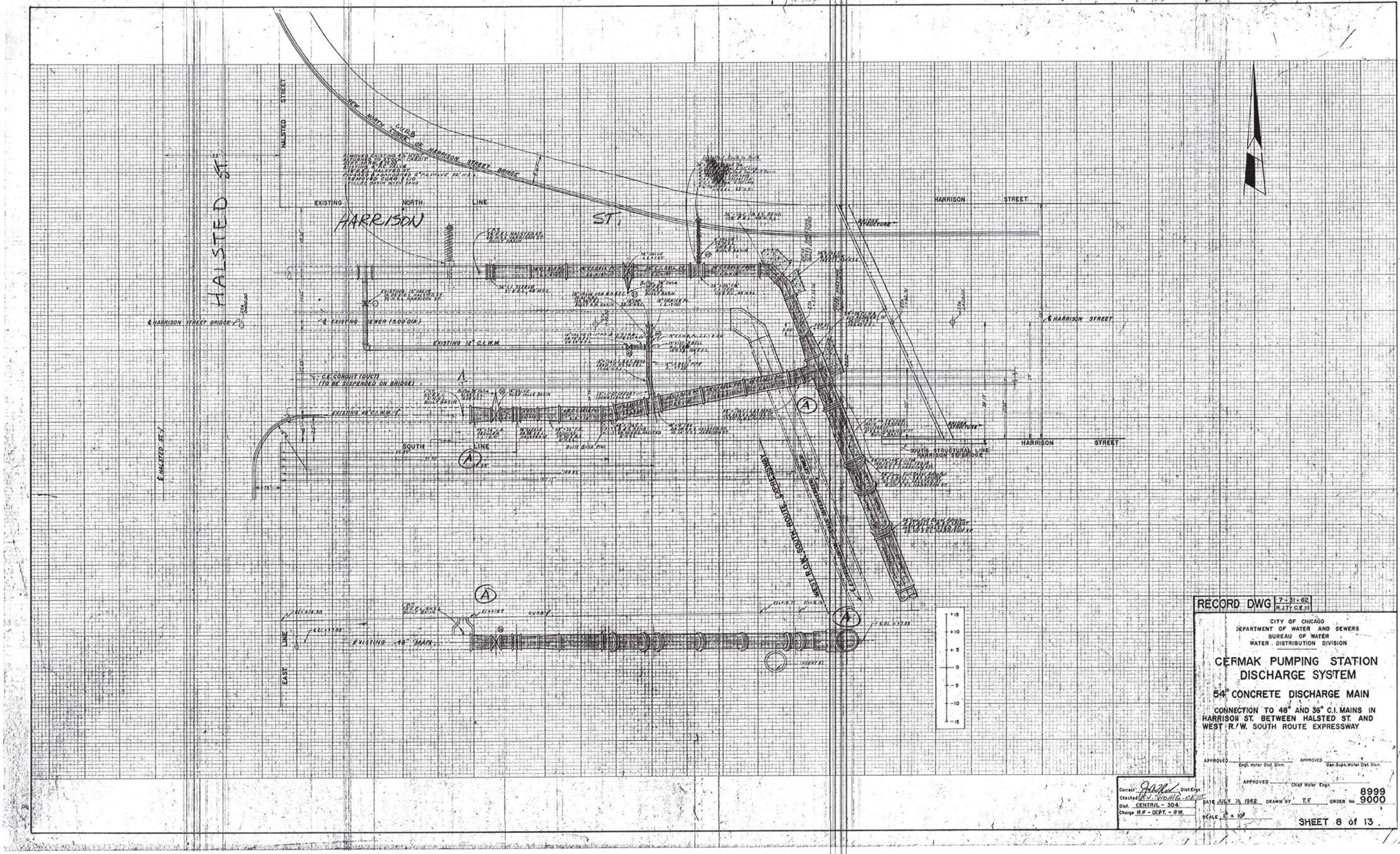


FILE PATH = p:\1\389039-para\1\aeconom\1\local\p\w\ec\dwg\0\Documents\01_Americas\Transportation\62269938_Circle\Phase_1\1\000_CAD\005_Roadway\Sheets\60W26_sht-WM-14.dgn



RECORD DWG 7-31-62
R.I.T. C.E.II

CITY OF CHICAGO
DEPARTMENT OF WATER AND SEWERS
BUREAU OF WATER
WATER DISTRIBUTION DIVISION

**CERMAK PUMPING STATION
DISCHARGE SYSTEM**

54" CONCRETE DISCHARGE MAIN

CONNECTION TO 48" AND 36" C.I. MAINS IN
HARRISON ST. BETWEEN HALSTED ST. AND
WEST R/W. SOUTH ROUTE EXPRESSWAY

APPROVED: [Signature] Engr. Water Dist. Div. APPROVED: [Signature] Gen. Supv. Water Dist. Div.

Checked: [Signature] Dist. Engr. Checked: [Signature] Chief Water Engr.

Dist. CENTRAL - 304 DATE JULY 31, 1962 DRAWN BY: T.F. ORDER NO. 8999

Charge R.F. - DEPT. - RW SHEET 8 of 13



DI60W26-sht-WM-14.dgn
USER NAME = chitua
PLOT SCALE = 20.0000' / in.
PLOT DATE = 8/17/2013

DESIGNED - HHC REVISED -
DRAWN - HHC REVISED -
CHECKED - RBB REVISED -
DATE - 8/20/13 REVISED -

STATE OF ILLINOIS
DEPARTMENT OF TRANSPORTATION

WATER MAIN RECORD INFORMATION

SCALE: SHEET OF SHEETS STA. TO STA.

F.A.I. R.T.E.	SECTION	COUNTY	TOTAL SHEETS	SHEET NO.
90/94/290	2013-008R	COOK	559	153
				CONTRACT NO. 60W26
ILLINOIS FED. AID PROJECT				