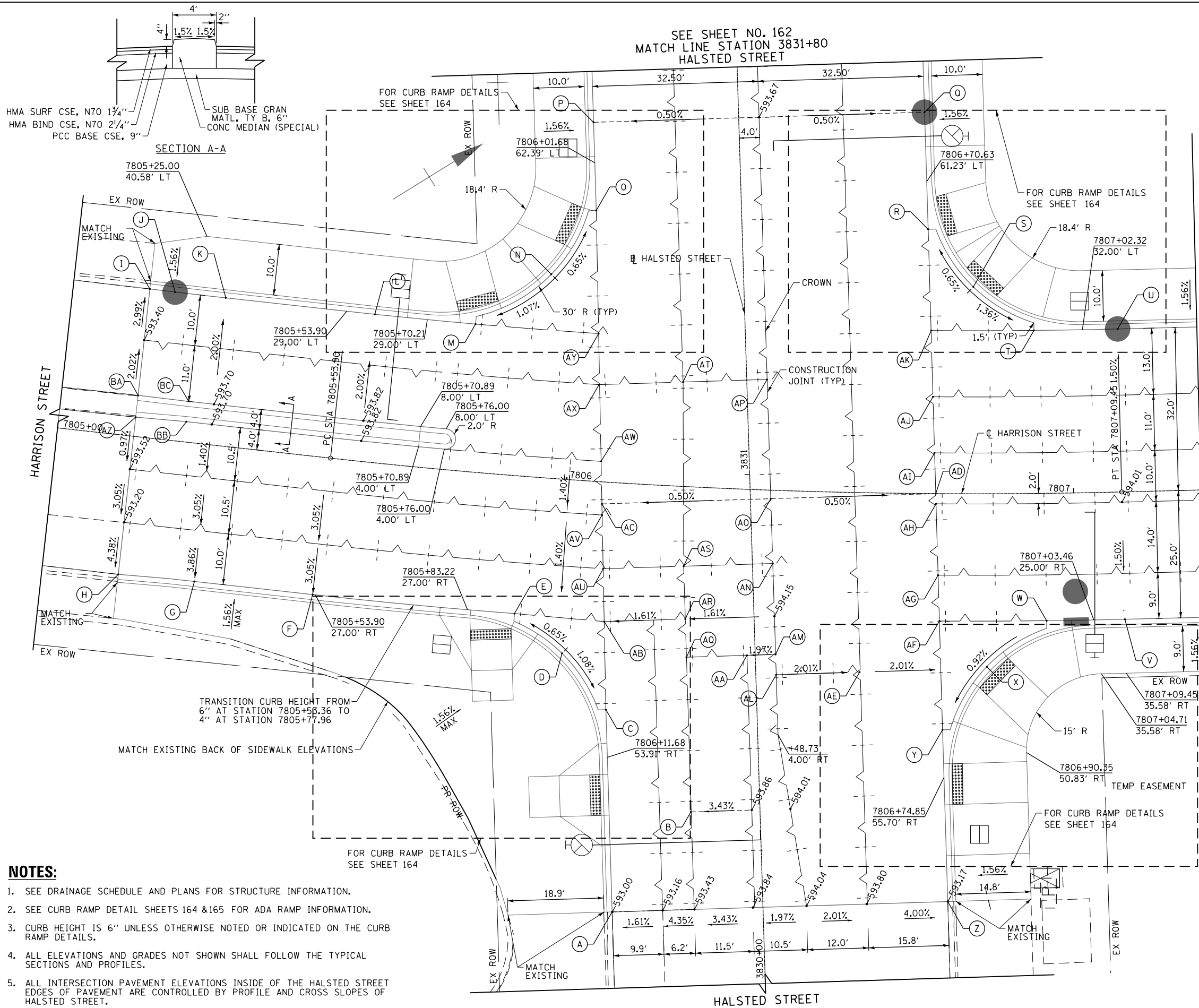


SEE SHEET NO. 162  
MATCH LINE STATION 3831+80  
HALSTED STREET

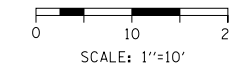


HARRISON STREET  
MATCH LINE STATION 7807+25  
SEE SHEET NO. 163

	STATION	OFFSET	ELEVATION
A	3830+20.00	29.6' LT	593.00
B	3830+34.14	13.6' LT	593.45
C	3830+54.71	29.6' LT	593.37
D	3830+66.03	37.9' RT	593.53
E	7805+92.25	27.0' RT	593.45
F	7805+53.36	27.0' RT	593.02
G	7805+30.00	27.0' RT	592.84
H	7805+15.00	27.3' RT	592.75
I	7805+15.00	29.1' LT	593.10
J	7805+20.00	29.0' LT	593.16
K	7805+30.00	29.0' LT	593.28
L	7805+59.53	29.0' LT	593.40
M	7805+79.95	29.0' LT	593.54
N	3831+40.44	37.7' LT	593.74
O	3831+52.70	28.5' LT	593.63
P	3831+70.00	28.5' LT	593.51
Q	3831+70.00	36.5' RT	593.51
R	3831+47.00	36.5' RT	593.69
S	3831+35.43	45.0' RT	593.79
T	7806+92.55	32.0' LT	593.58
U	7807+09.45	32.0' LT	593.50
V	7807+09.45	25.0' RT	593.67
W	7806+94.42	25.0' RT	593.61
X	3830+60.84	45.4' RT	593.47
Y	3830+48.73	36.3' RT	593.32
Z	3830+15.00	36.3' RT	593.17
AA	3830+64.52	1.6' LT	594.10
AB	3830+72.01	29.4' LT	593.61
AC	3830+95.10	29.2' LT	593.95
AD	3830+95.10	36.4' RT	593.96
AE	3830+60.54	20.4' RT	593.78
AF	3830+70.08	36.3' RT	593.62
AG	3830+79.09	36.4' RT	593.76
AH	3830+93.10	36.4' RT	593.93
AI	3831+03.11	36.4' RT	593.95
AJ	3831+14.11	36.4' RT	593.92
AK	3831+27.12	36.5' RT	593.85
AL	3830+60.54	4.0' RT	594.11
AM	3830+64.52	4.0' RT	594.13
AN	3830+82.38	4.0' RT	594.11
AO	3830+95.10	4.0' RT	594.12
AP	3831+18.51	4.0' RT	594.06
AQ	3830+64.52	13.5' LT	593.78
AR	3832+72.01	13.5' LT	593.86
AS	3830+82.38	13.5' LT	593.95
AT	3831+18.51	12.5' LT	593.98
AU	3830+82.38	29.3' LT	593.78
AV	3830+92.92	29.2' LT	593.92
AW	3831+03.45	29.1' LT	593.95
AX	3831+18.51	29.0' LT	593.90
AY	3831+28.54	28.8' LT	593.84
AZ	7805+15.00	3.78' RT	593.62
BA	7805+15.00	8.08' LT	593.62
BB	7805+25.00	4.00' RT	593.67
BC	7805+25.00	8.00' LT	593.67

**NOTES:**

- SEE DRAINAGE SCHEDULE AND PLANS FOR STRUCTURE INFORMATION.
- SEE CURB RAMP DETAIL SHEETS 164 & 165 FOR ADA RAMP INFORMATION.
- CURB HEIGHT IS 6" UNLESS OTHERWISE NOTED OR INDICATED ON THE CURB RAMP DETAILS.
- ALL ELEVATIONS AND GRADES NOT SHOWN SHALL FOLLOW THE TYPICAL SECTIONS AND PROFILES.
- ALL INTERSECTION PAVEMENT ELEVATIONS INSIDE OF THE HALSTED STREET EDGES OF PAVEMENT ARE CONTROLLED BY PROFILE AND CROSS SLOPES OF HALSTED STREET.



FILE PATH = c:\pwworking\lsc\com\01\lsc\2012\09\26\1616026-Sht-Intersec-01.dgn



D16026-Sht-Intersec-01.dgn  
USER NAME = kolorenz  
PLOT SCALE = 10.0000' / in.  
PLOT DATE = 9/12/2013

DESIGNED - KAL  
DRAWN - BAW  
CHECKED - JLV  
DATE - 9/15/13

REVISED -  
REVISED -  
REVISED -  
REVISED -

STATE OF ILLINOIS  
DEPARTMENT OF TRANSPORTATION

ROADWAY AND GRADING PLAN DETAILS  
HALSTED STREET

SCALE: 1"=10' SHEET 1 OF 3 SHEETS STA. 3830+00 TO STA. 3831+80

F.A.I. RTE. 90/94/290	SECTION 2013-008R	COUNTY COOK	TOTAL SHEETS 559	SHEET NO. 161
CONTRACT NO. 60W26			ILLINOIS FED. AID PROJECT	