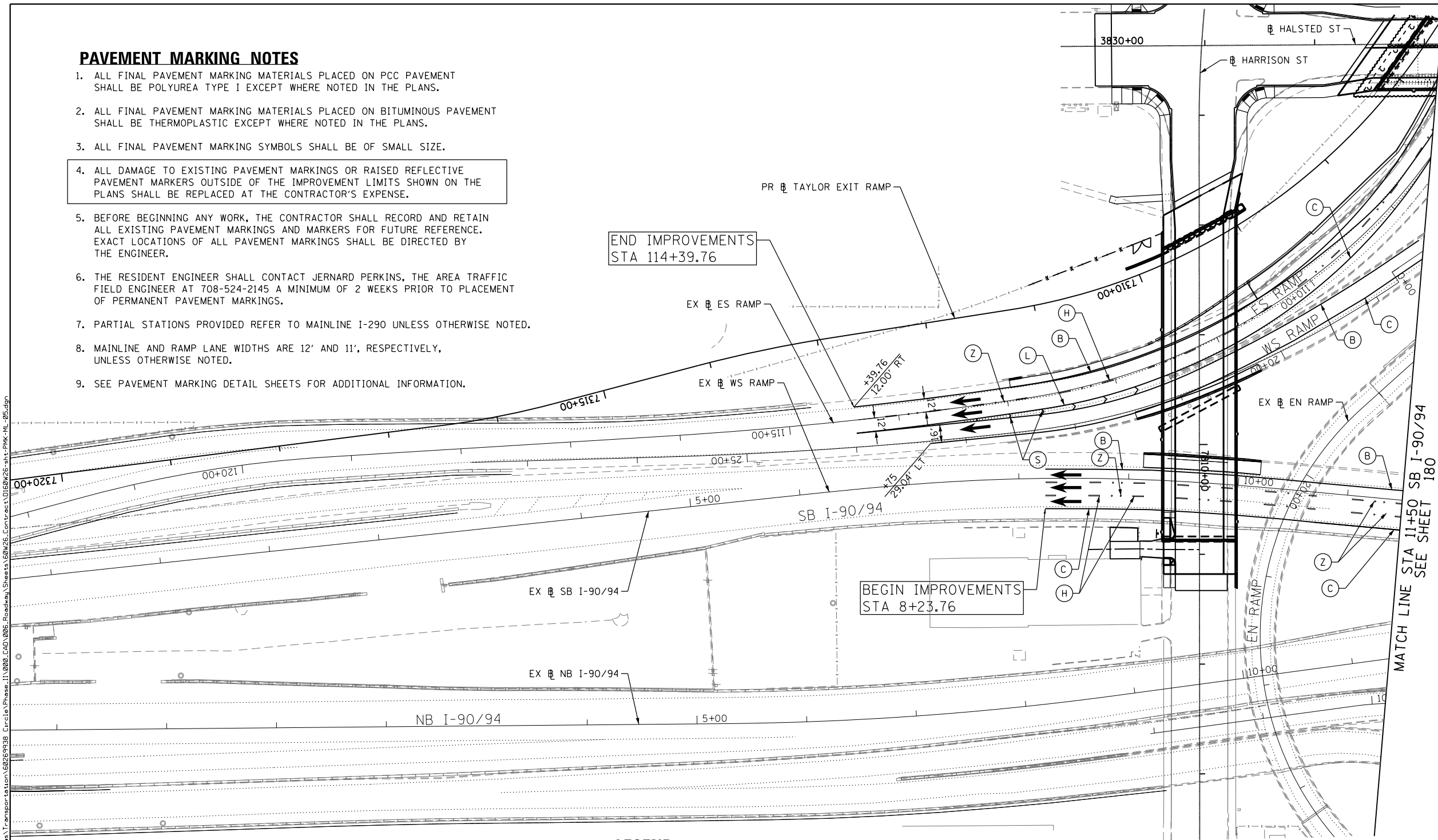
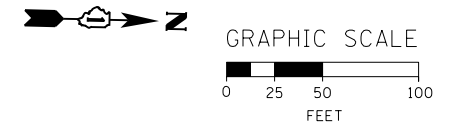


**PAVEMENT MARKING NOTES**

1. ALL FINAL PAVEMENT MARKING MATERIALS PLACED ON PCC PAVEMENT SHALL BE POLYUREA TYPE I EXCEPT WHERE NOTED IN THE PLANS.
2. ALL FINAL PAVEMENT MARKING MATERIALS PLACED ON BITUMINOUS PAVEMENT SHALL BE THERMOPLASTIC EXCEPT WHERE NOTED IN THE PLANS.
3. ALL FINAL PAVEMENT MARKING SYMBOLS SHALL BE OF SMALL SIZE.
4. ALL DAMAGE TO EXISTING PAVEMENT MARKINGS OR RAISED REFLECTIVE PAVEMENT MARKERS OUTSIDE OF THE IMPROVEMENT LIMITS SHOWN ON THE PLANS SHALL BE REPLACED AT THE CONTRACTOR'S EXPENSE.
5. BEFORE BEGINNING ANY WORK, THE CONTRACTOR SHALL RECORD AND RETAIN ALL EXISTING PAVEMENT MARKINGS AND MARKERS FOR FUTURE REFERENCE. EXACT LOCATIONS OF ALL PAVEMENT MARKINGS SHALL BE DIRECTED BY THE ENGINEER.
6. THE RESIDENT ENGINEER SHALL CONTACT JERNARD PERKINS, THE AREA TRAFFIC FIELD ENGINEER AT 708-524-2145 A MINIMUM OF 2 WEEKS PRIOR TO PLACEMENT OF PERMANENT PAVEMENT MARKINGS.
7. PARTIAL STATIONS PROVIDED REFER TO MAINLINE I-290 UNLESS OTHERWISE NOTED.
8. MAINLINE AND RAMP LANE WIDTHS ARE 12' AND 11', RESPECTIVELY, UNLESS OTHERWISE NOTED.
9. SEE PAVEMENT MARKING DETAIL SHEETS FOR ADDITIONAL INFORMATION.



**LEGEND**

PAVEMENT MARKING MATERIAL		PAVEMENT MARKING TYPE	
○	EPOXY PAVEMENT MARKING	A - LETTERS AND SYMBOLS (WHITE)	L - 8" WHITE EDGE LINE
◇	TEMPORARY PAVEMENT MARKING	B - 4" WHITE EDGE LINE	M - 12" WHITE (2' DASH, 2' SKIP)
□	THERMOPLASTIC PAVEMENT MARKING	C - 4" YELLOW LINE	N - 12" WHITE 45° DIAGONALS SPACED @ 20' CENTERS
△	POLYUREA PAVEMENT MARKING TYPE I	D - 4" DOUBLE YELLOW CENTERLINE	O - 12" WHITE 45° DIAGONALS SPACED @ 30' CENTERS
		E - 4" WHITE (6' DASH, 18' SKIP)	P - 12" WHITE 45° DIAGONALS SPACED @ 500' CENTERS
		F - 4" YELLOW (6' DASH, 18' SKIP)	Q - 12" YELLOW 45° DIAGONALS SPACED @ 50' CENTERS
		G - 4" WHITE (2' DASH, 6' SKIP)	R - 12" YELLOW 45° DIAGONALS SPACED @ 500' CENTERS
		H - 5" WHITE (10' DASH, 30' SKIP)	S - 12" WHITE CHEVRONS SPACED @ 30' CENTERS
		I - 6" WHITE SOLID LINE	T - 24" WHITE STOP BAR
		J - 6" WHITE (2' DASH, 6' SKIP)	U - 24" WHITE CROSSWALK, 6' WIDTH, SPACED @ 4' CENTERS
		K - 6" WHITE 45° DIAGONALS SPACED @ 20' CENTERS	Y - RAISED REFLECTIVE PAVEMENT MARKER (1-WAY YELLOW / OPAQUE)
			Z - RAISED REFLECTIVE PAVEMENT MARKER (1-WAY CRYSTAL / OPAQUE)

FILE PATH = p:\388035\pml\escomon\line\local\PMK-ML-05.dgn



DI60W26-sht-PMK-ML-05.dgn  
 USER NAME = chitua  
 PLOT SCALE = 50.0000' / in.  
 PLOT DATE = 9/12/2013

DESIGNED - OPS	REVISED -
DRAWN - OPS	REVISED -
CHECKED - DBM	REVISED -
DATE - 9/15/13	REVISED -

**STATE OF ILLINOIS  
 DEPARTMENT OF TRANSPORTATION**

**PAVEMENT MARKING PLANS  
 INTERSTATE AND RAMPS**

SCALE: 1" = 50' SHEET 11 OF 11 SHEETS STA. 347+00 TO STA. 362+00

F.A.I. RTE.	SECTION	COUNTY	TOTAL SHEETS	SHEET NO.
90/94/290	2013-008R	COOK	559	182
CONTRACT NO. 60W26				
ILLINOIS FED. AID PROJECT				