

* Center of horizontal to center of splice dimension may vary. Verify before drilling holes in mounting tube.

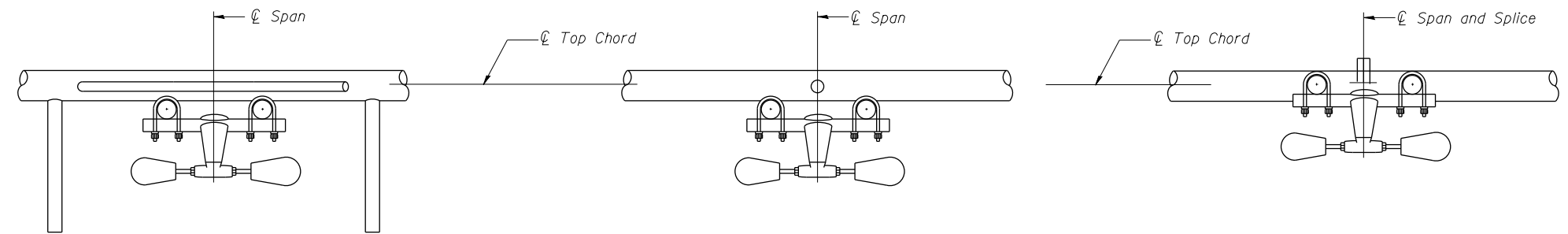
PLAN DETAIL "A"
Span between Panel Points

PLAN DETAIL "B"
Span at Panel Point

PLAN DETAIL "C"
Span at Chord Splice

NOTES

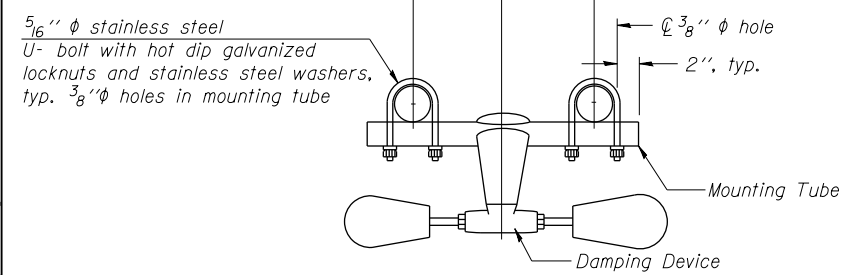
- Damper:** One damper per truss. (31 lbs. minimum Stockbridge-Type Aluminum - 29" minimum between ends of weights) Cost included in Overhead Sign Structure...
- Materials:** Materials: Aluminum tubes shall be ASTM B221 alloy 6061 temper T6. Cost included in Overhead Sign Structure...



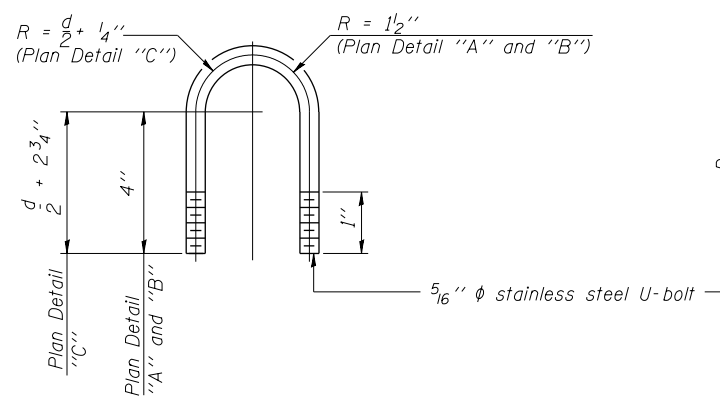
SECTION A-A

SECTION B-B

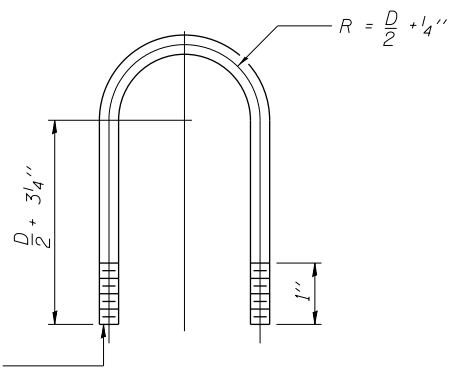
SECTION C-C



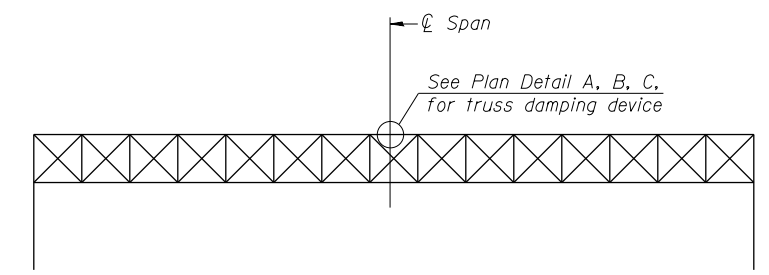
TRUSS DAMPING DEVICE CONNECTION DETAIL
(Typical)



DAMPING DEVICE MOUNTING TUBE U-BOLT DETAIL
(Typical)



TOP CHORD TO CROSS TUBE U-BOLT DETAIL
(Typical - Detail "A" and "B")



ELEVATION
Aluminum Overhead Sign Truss

FILE PATH = c:\pwworking\lucasecom\02\lucase\10160W26-sht-5\Sign-Det-10.dgn



DI60W26-sht-Sign-Det-10.dgn	DESIGNED - KAH	REVISED -
USER NAME = kolorenz	DRAWN - RLS	REVISED -
PLOT SCALE = 10.0000' / 1"	CHECKED - WJC	REVISED -
PLOT DATE = 8/18/2013	DATE - 8/20/13	REVISED -

STATE OF ILLINOIS
DEPARTMENT OF TRANSPORTATION

OVERHEAD SIGN STRUCTURES		F.A.I. RTE.	SECTION	COUNTY	TOTAL SHEETS	SHEET NO.
DAMPING DEVICE		90/94/290	2013-008R	COOK	559	192
SCALE: N.T.S.	SHEET 4 OF 11 SHEETS	STA.	TO STA.		CONTRACT NO. 60W26	
ILLINOIS FED. AID PROJECT						