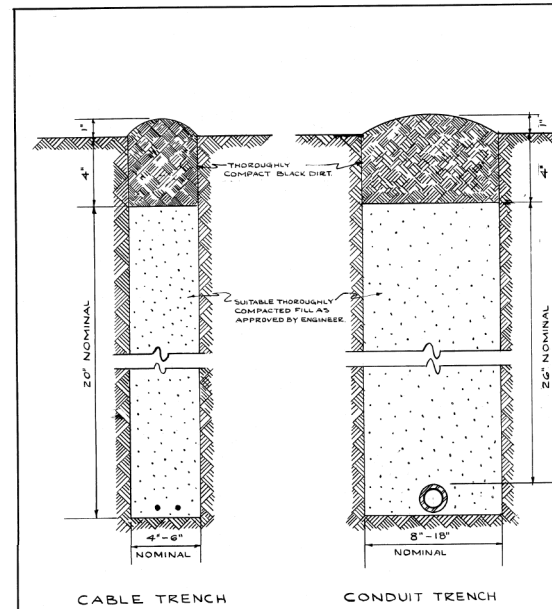


ALUMINUM PEDESTAL BASE WITH HANDHOLE

REVISION	DESCRIPTION	DATE
A	CHANGED OVERALL HEIGHTS 2'-22"	5-3-60
B	Revised Table of Overall Heights	6-30-60
C	Revised G.O. of Pedestal	12-21-60
D	Revised Specification Number	9-13-62
E	Revised Table of Overall Heights	6-4-64
F	Revised Door Dimensions	7-14-70
G	Revised Overall Heights	02/16/73
H	Revised Overall Heights	5-4-79

Street Lighting Control, Traffic Signal Control and Traffic Signal Head

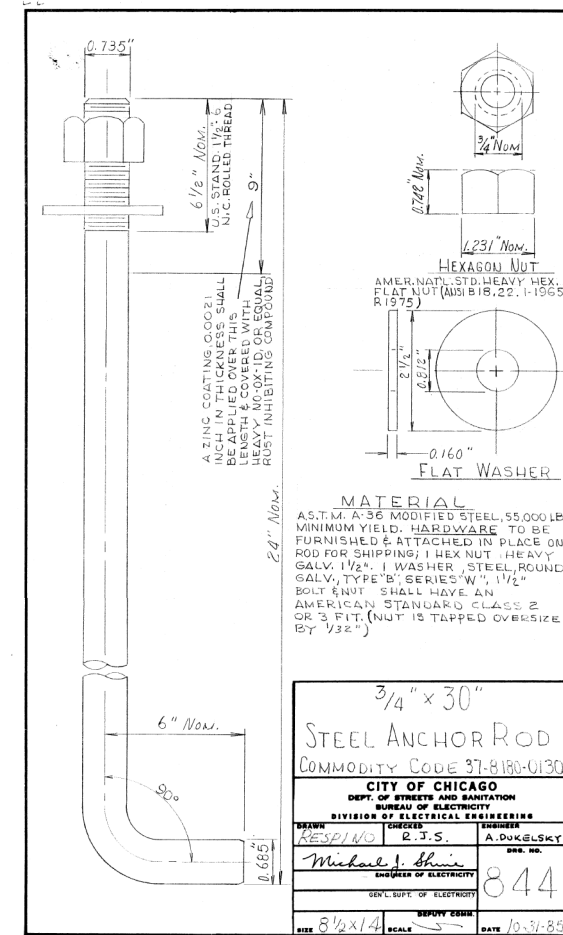
CITY OF CHICAGO DEPT. OF STREETS AND SANITATION DIVISION OF ELECTRICAL ENGINEERING	526
--	-----



CABLE TRENCH CONDUIT TRENCH

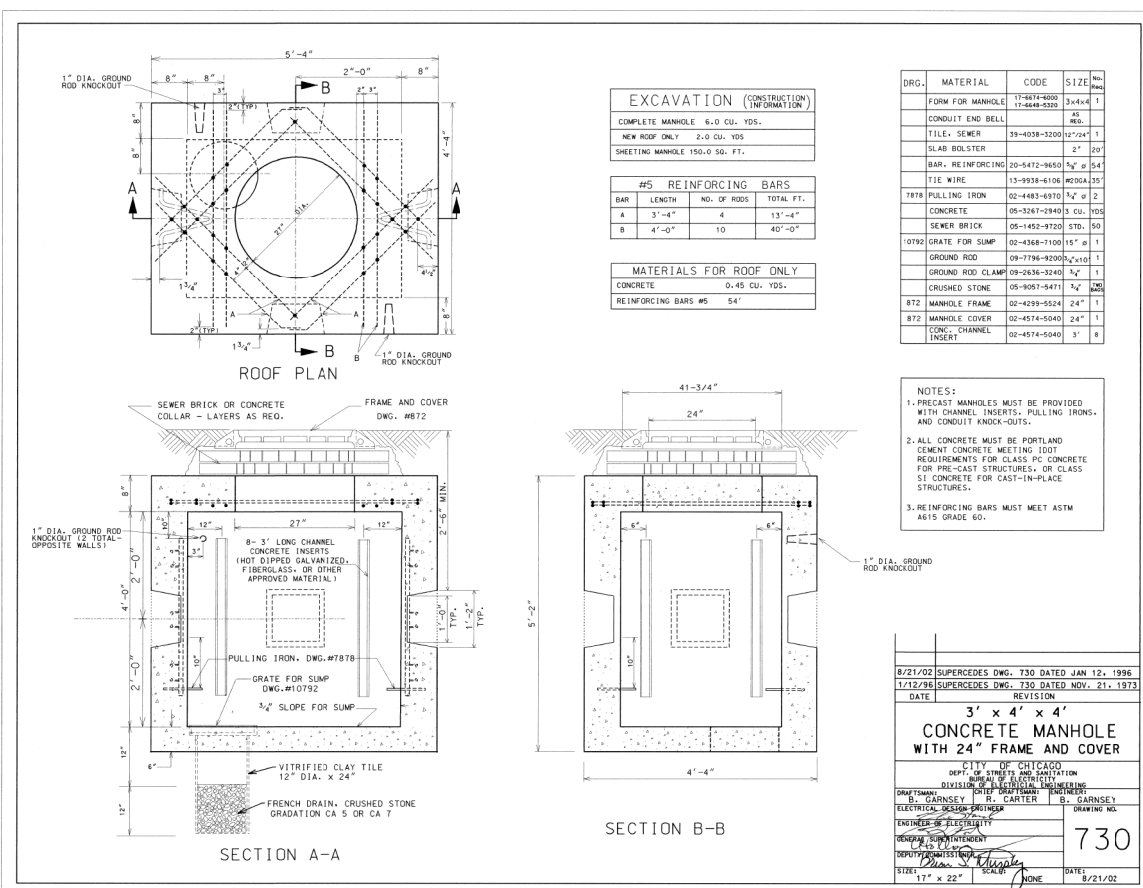
NOTE: EXCESS SOIL FROM TRENCH TO BE COMPLETELY REMOVED FROM SITE AS SOON AS PRACTICABLE. BLACK DIKE TO BE TAMPED & THOROUGHLY COMPACTED AS SHOWN.

CITY OF CHICAGO DEPT. OF STREETS AND SANITATION DIVISION OF ELECTRICAL ENGINEERING	579
--	-----



STEEL ANCHOR ROD

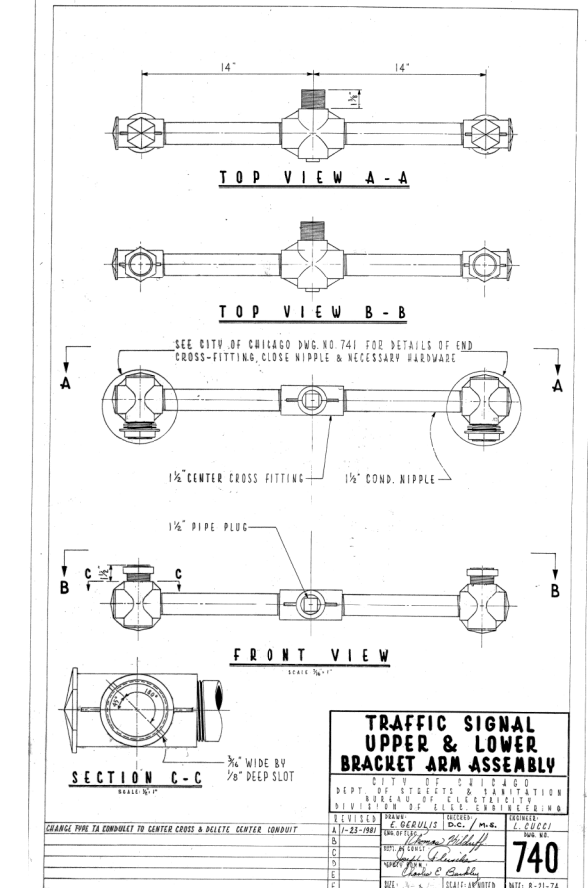
CITY OF CHICAGO DEPT. OF STREETS AND SANITATION BUREAU OF ELECTRICAL ENGINEERING	844
--	-----



MATERIAL	CODE	SIZE	QTY
FORM FOR MANHOLE	17-8814-8000	3'-6" x 4'-4"	1
CONDUIT END BELL	17-8888-2000	4"	2
TILE - SEWER	39-6058-3200	12" x 24"	1
SLAB BOLSTER		2"	20
BAR, REINFORCING	20-5472-8650	1/2" @ 54"	
TIE WIRE	13-9938-6106	16GA	35
PULLING IRON	02-4483-6370	1/2" @ 2'	
CONCRETE	06-3247-2840	1 CU. YD.	100
SEWER BRICK	06-1452-3720	STD. 50	
GRATE FOR SUMP	02-4368-7100	15" @ 1'	
GROUND ROD	08-7746-8020	2"x10"	1
GROUND ROD CLAMP	09-0246-3240	1/2"	1
CRUSHED STONE	05-9097-9471	1/2"	200
MANHOLE FRAME	02-4299-5524	24"	1
MANHOLE COVER	02-4574-5040	24"	1
CONC. CHANNEL INSERT	02-4574-5040	3" x 8"	1

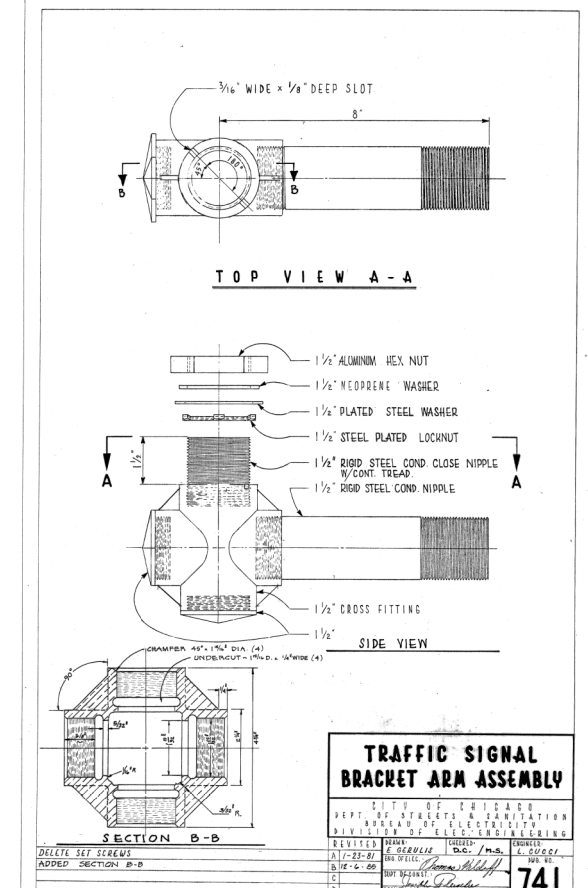
NOTES:
1. PRECAST MANHOLES MUST BE PROVIDED WITH CHANNEL INSERTS, PULLING IRONS, AND CONDUIT KNOCK-OUTS.
2. ALL CONCRETE MUST BE PORTLAND CEMENT CONCRETE MEETING DOT REQUIREMENTS FOR CLASS FC CONCRETE FOR PRE-CAST STRUCTURES, OR CLASS ST CONCRETE FOR CAST-IN-PLACE STRUCTURES.
3. REINFORCING BARS MUST MEET ASTM A615 GRADE 60.

CITY OF CHICAGO DEPT. OF STREETS AND SANITATION DIVISION OF ELECTRICAL ENGINEERING	740
--	-----



TRAFFIC SIGNAL UPPER & LOWER BRACKET ARM ASSEMBLY

CITY OF CHICAGO DEPT. OF STREETS AND SANITATION BUREAU OF ELECTRICAL ENGINEERING	740
--	-----



TRAFFIC SIGNAL BRACKET ARM ASSEMBLY

CITY OF CHICAGO DEPT. OF STREETS AND SANITATION BUREAU OF ELECTRICAL ENGINEERING	741
--	-----

FILE PATH = c:\pwworking\jasoncom00\gedemer\ad204536\DI60W26-sht-Ts-10.dgn

EJM ENGINEERING, INC.
411 South Wells Street Suite 1000
Chicago, Illinois 60607

USER NAME = Ggedemer	DESIGNED - PWF	REVISED -
PLOT SCALE = 1:8000 / 1"	DRAWN - PWF	REVISED -
PLOT DATE = 8/14/2013	CHECKED - GG	REVISED -
	DATE - 08/20/13	REVISED -

STATE OF ILLINOIS
DEPARTMENT OF TRANSPORTATION

CDOT STANDARD DRAWINGS

SCALE: NONE SHEET 2 OF 8 SHEETS STA. TO STA.

F.A.I. R.T.E.	SECTION	COUNTY	TOTAL SHEETS	SHEET NO.
90/94/290	2013-008R	COOK	559	217
				CONTRACT NO. 60W26
				ILLINOIS FED. AID PROJECT