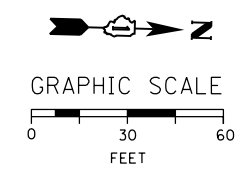
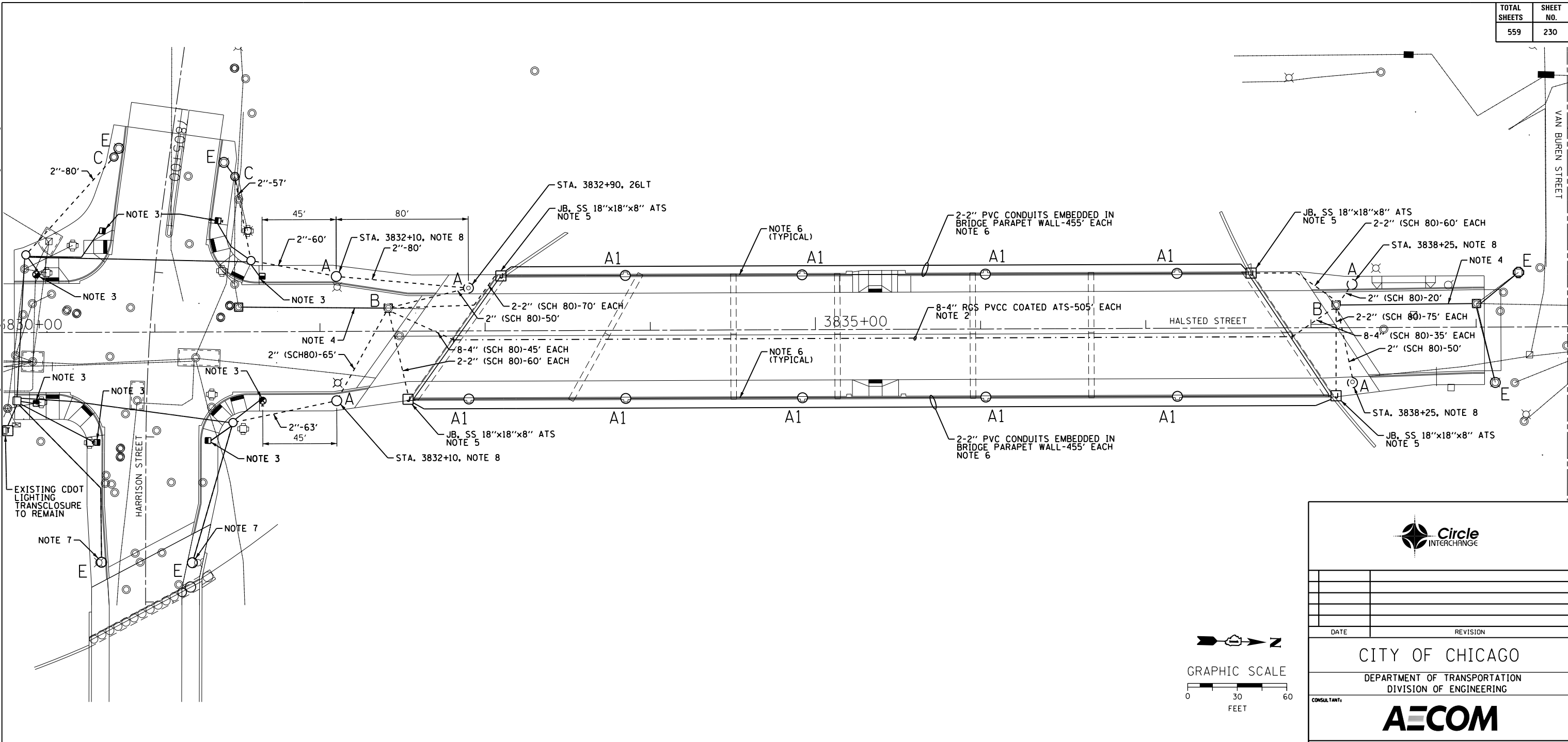


c:\pwworking\acem00\myer\sc\d0207895\DIGOW26-sht-Light-07.dgn
 8/15/2013 10:26:22 AM



- "A" PROVIDE 28"x7', 1-1/4" A.R., 15" B.C. FOUNDATION FOR LIGHT POLE, PER DWG. NOS. 953 AND 837.
- "A1" LIGHT POLE FOUNDATION IS INTEGRAL TO THE BRIDGE STRUCTURE PARAPET WALL. SEE STRUCTURAL PLANS FOR DETAILS AND FINAL LOCATION OF FOUNDATION.
- "B" PROVIDE 3'x4'x4' CONCRETE MANHOLE PER DWG. NO. 730 WITH 24" FRAME AND COVER.
- "C" DRILL EXISTING MANHOLE/HANDHOLE.
- "E" EXISTING TO REMAIN.

NOTES:

1. INTERCEPT EXISTING LIGHTING CONDUIT TO EXISTING LIGHT POLE. CUT CONDUIT AND EXTEND END OF EXISTING CONDUIT TO NEW FOUNDATION.
2. PROVIDE EIGHT 4-INCH RIGID GALVANIZED STEEL PVC COATED CONDUITS ATTACHED TO STRUCTURE. THE CONDUITS SHALL BE MOUNTED UNDER THE BRIDGE DECK. SEE STRUCTURAL PLANS FOR LOCATION OF CONDUITS.
3. SEE THE TRAFFIC SIGNAL PLANS FOR LOCATION OF COMBINATION TRAFFIC SIGNAL/LIGHT POLE FOUNDATION. COORDINATE ALL WORK WITH TRAFFIC SIGNAL WORK.
4. INTERCEPT EXISTING CONDUITS AND CONNECT TO PROPOSED MANHOLE.
5. SEE DRAWING NO. E-13 FOR EMBEDDED CONDUIT EXITING PARAPET WALL DETAILS.
6. PROVIDE TWO 2-INCH SCHEDULE 40 PVC CONDUITS IN BOTH BRIDGE PARAPET WALLS; ONE FOR THE LIGHTING CIRCUITS AND ONE SPARE. SEE STRUCTURAL PLANS FOR LOCATIONS, DETAILS AND INSTALLATION OF CONDUITS.
7. SEE DRAWING E-10 FOR CONTINUATION OF CONDUIT RUN TO THE NEXT LIGHT POLE FOUNDATION ON HARRISON STREET.
8. INSTALL LIGHT POLE FOUNDATION IN THE SIDEWALK 3 FEET FROM THE FACE OF CURB TO CENTER OF FOUNDATION.

FOR LIGHTING CABLE AND EQUIPMENT INSTALLATION PLANS SEE DRAWING NO. E-08.
 FOR LIGHTING REMOVAL PLANS SEE DRAWING NO. E-09.

DRAFTSMAN: CAM		CHIEF DRAFTSMAN: WDS	ENGINEER: WDS
SUPERVISING ENGINEER: WDS		ELEC. DESIGN ENGR. WDS	
ENGINEER OF ELECTRICITY:			
GEN'L SUPT. OF ELECTRICITY:			
DEPUTY COMMISSIONER:			
SIZE: 22" 34"	SCALE: 1" = 30'	DATE: 8/20/13	
DATE: 08/20/13			DWG. NO.: E-07
C.D.O.T. PROJECT NO.:			7 OF 22

CITY OF CHICAGO
 DEPARTMENT OF TRANSPORTATION
 DIVISION OF ENGINEERING

AECOM

WORK ORDER NO. _____ DATE _____
 COST ALLOCATION ACCOUNT _____
 APPROPRIATION ACCOUNT MATERIAL _____ LABOR _____

HALSTED STREET LIGHTING CONDUIT AND FOUNDATION PLAN

CITY OF CHICAGO
 DEPT. OF TRANSPORTATION
 DIVISION OF ELECTRICAL OPERATIONS