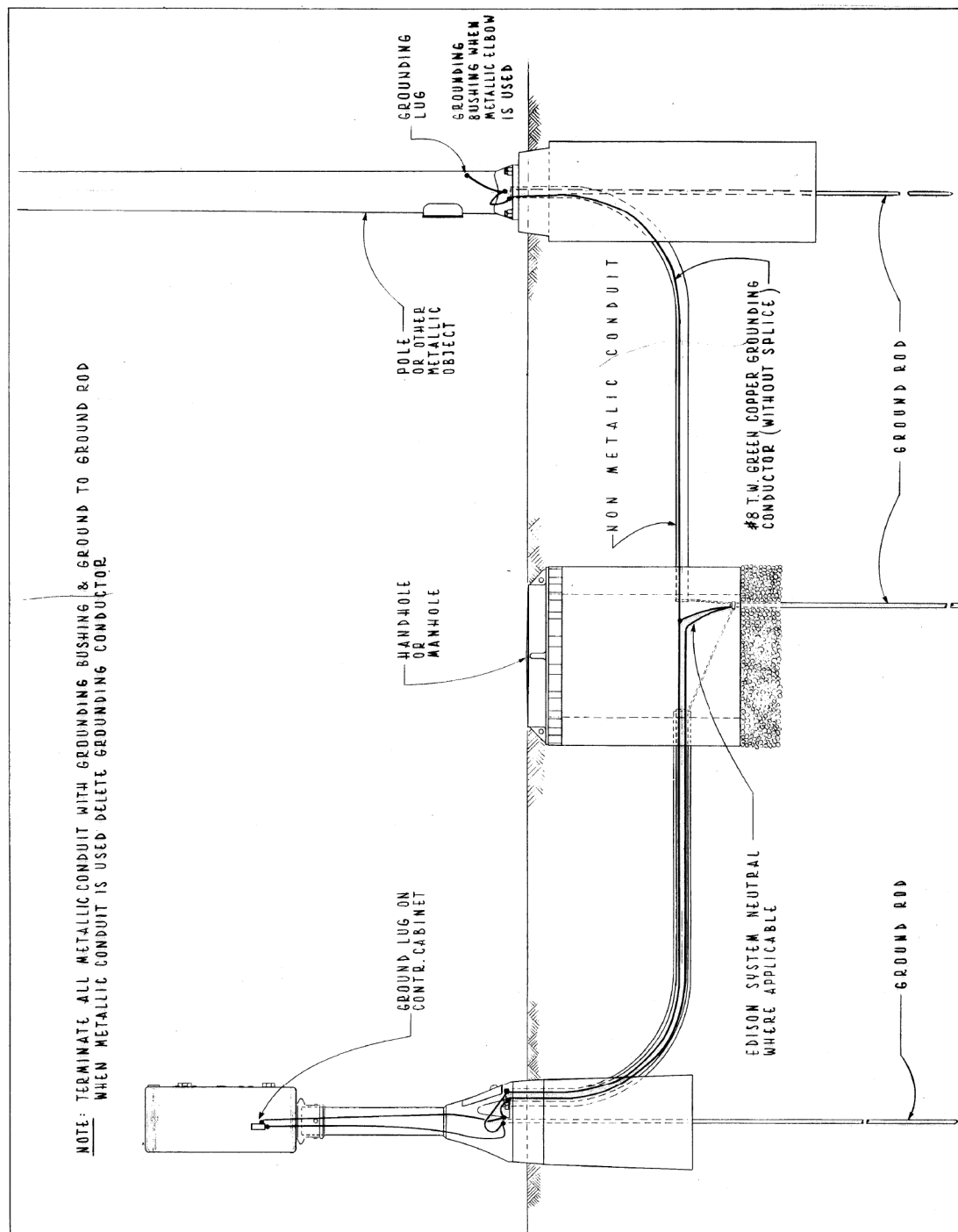


FILE PATH = p:\388935\pmt\escomonline\local\PECOM\Documents\01_Americas\Transportation\62629938_Circle\Phase_1\1000_CAD\01E_Electrical\Sheets\60W26_Contract\0160W26-sht-Light-16

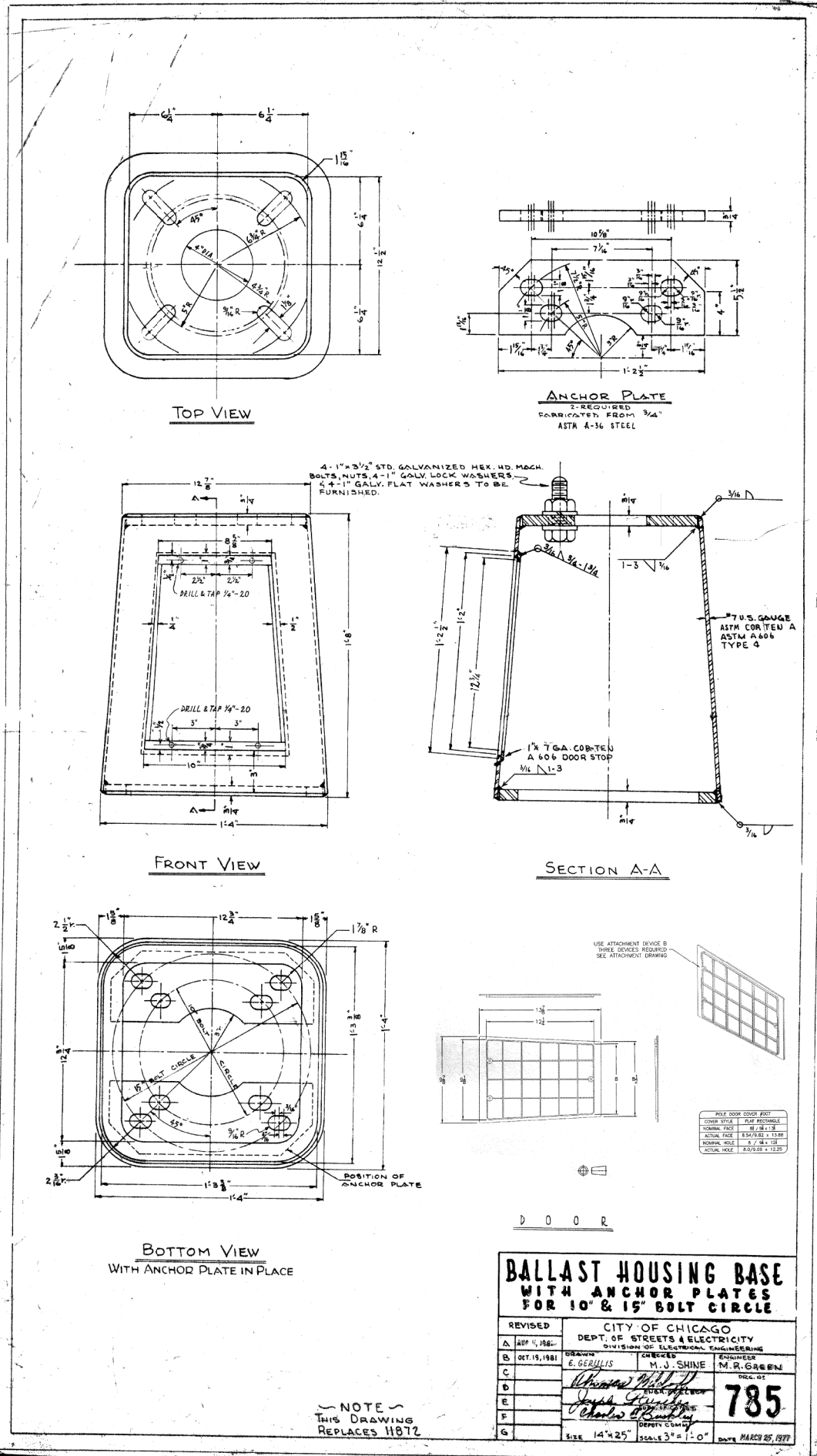


TYPICAL GROUNDING METHODS FOR BUREAU OF ELECTRICITY EQUIPMENT

CITY OF CHICAGO
DEPT. OF STREETS & SANITATION
BUREAU OF ELECTRICITY
DIVISION OF ELEC. ENGINEERING

REVISED	DRAWN: E. GERULIS	CHECKED: M. SHINE	ENGINEER: J. O'CONNOR
A	Supt. Reconst. <i>Thomas J. Schaffner</i>		
B	Dep't. of Eng. <i>Joseph J. Buckley</i>		
C	Dep't. of Const. <i>Charles E. Buckley</i>		
D	Dep't. of Insp. <i>Charles E. Buckley</i>		
E	Dep't. of Maint. <i>Charles E. Buckley</i>		
F	SIZE: 8 1/2" x 14"	SCALE: 1" = 10'	DATE: 5-12-70

736



D160W26-sht-Light-16
USER NAME = myersc
PLOT SCALE = 1:0000' / 1" = 100'
PLOT DATE = 8/15/2013

DESIGNED - WDS
DRAWN - CAM
CHECKED - WDS
DATE - 8/20/13

REVISED -
REVISED -
REVISED -
REVISED -

STATE OF ILLINOIS
DEPARTMENT OF TRANSPORTATION

MISCELLANEOUS ELECTRICAL DETAILS

SCALE: N.T.S. SHEET 16 OF 22 SHEETS STA. TO STA.

F.A.I. RTE. 90/94/290	SECTION 2013-008R	COUNTY COOK	TOTAL SHEETS 559	SHEET NO. 239
CONTRACT NO. 60W26				
ILLINOIS FED. AID PROJECT				