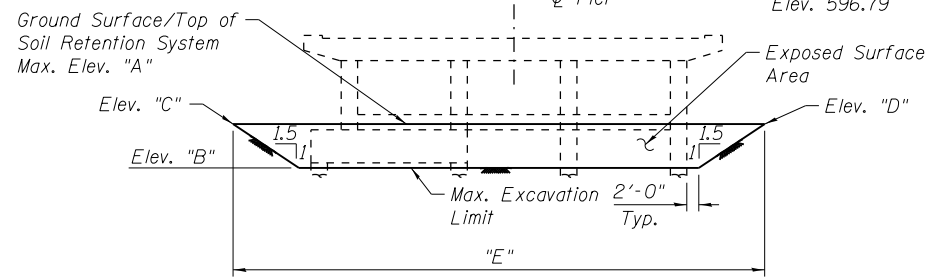


**NOTE A:**

The Drilled Shafts to be installed thru Existing Abandoned Tunnel require Permanent Casing. (see substructure sheets for details). (Drilling thru tunnel included in pay item Drilled Shaft In Soil. See Note 8.)

**LEGEND:**

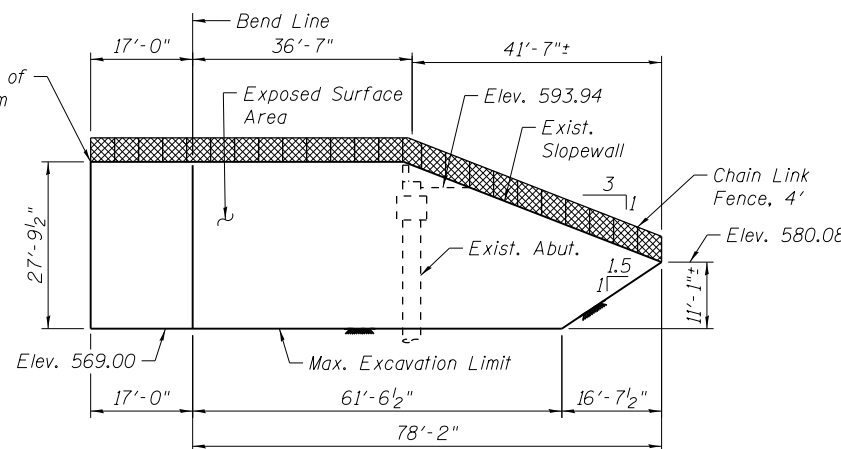
- Combined Sewer ————
- Electric — E ———
- Fiber Optic — FO ———
- Telephone — T ———
- Storm Sewer ————
- Water Line — W ———
- Fire Hydrant — (Symbol)
- Light Pole — (Symbol)
- Soil Boring — (Symbol)
- Bulkhead — (Symbol) (Part of advanced contract - By Others)
- Area filled with Grout — (Symbol) (Part of advanced contract - By Others)



**ELEVATION - TEMPORARY SOIL RETENTION SYSTEM AT EXISTING PIERS**  
(Looking West)  
(See Note 5)

Location	Elev. "A"	Elev. "B"	Elev. "C"	Elev. "D"	Length "E"
Pier 1	577.33	570.69	577.17	577.33	96'-6"
Pier 2	581.46	571.69	580.96	581.46	105'-5"
Pier 3	580.29	571.18	577.88	579.94	93'-9"

**SUBSTRUCTURE LAYOUT PLAN**



**ELEVATION - SOIL RETENTION SYSTEM AT WEST ABUTMENT**  
(Looking North)  
(See Note 5)

**BILL OF MATERIAL**

Item	Unit	Total
Temporary Soil Retention System	Sq. Ft.	2525
Soil Retention System	Sq. Ft.	2297
Chain Link Fence, 4'	Foot	99

**NOTES:**

- Bulkhead and area to be filled with grout shall be complete prior to construction of SN 016-1713 as part of advanced contract (By Others).
- Existing Utility between girders to be relocated (By Others) prior to bridge demolition. Utility to be placed back on proposed bridge (By Others).
- Temporary Soil Retention System required for existing pier removal. See sheets S1-04 thru S1-06.
- Soil Retention System to be left in place. Required for proposed abutment construction. To be removed in future contract (By Others).
- A cantilever sheet piling design does not appear feasible and additional members or other retention systems may be necessary. The Contractor shall submit a temporary soil retention system and soil retention system design including plan details and calculations for review and acceptance by the Engineer.
- The Contractor shall take precautions to protect existing utilities and foundations during construction of the bridge. The utilities were located based on SUE and utility supplier information available at design.
- Temporary soil retention system to avoid existing roadway drainage.
- Contractor shall provide equipment, labor, and materials as required to install drilled shafts thru existing abandoned tunnel at locations shown. The costs incurred by installation thru tunnel shall not be measured separately but shall be included in the respective Drilled Shaft pay item.



USER NAME = dunkerleyb	DESIGNED - EJO	REVISIONS
PLOT SCALE = N.T.S.	CHECKED - ATB	REVISIONS
PLOT DATE = 9/15/2013	DRAWN - BRD	REVISIONS
	CHECKED - EJO	REVISIONS

STATE OF ILLINOIS  
DEPARTMENT OF TRANSPORTATION

SUBSTRUCTURE LAYOUT  
STRUCTURE NO. 016-1713

SHEET NO. S1-07 OF S1-48 SHEETS

F.A.I. RTE. 90/94/290	SECTION 2013-00BR	COUNTY COOK	TOTAL SHEETS 559	SHEET NO. 257
CONTRACT NO. 60W26			ILLINOIS FED. AID PROJECT	

0161713-60W26-S07-SubSTRUCT