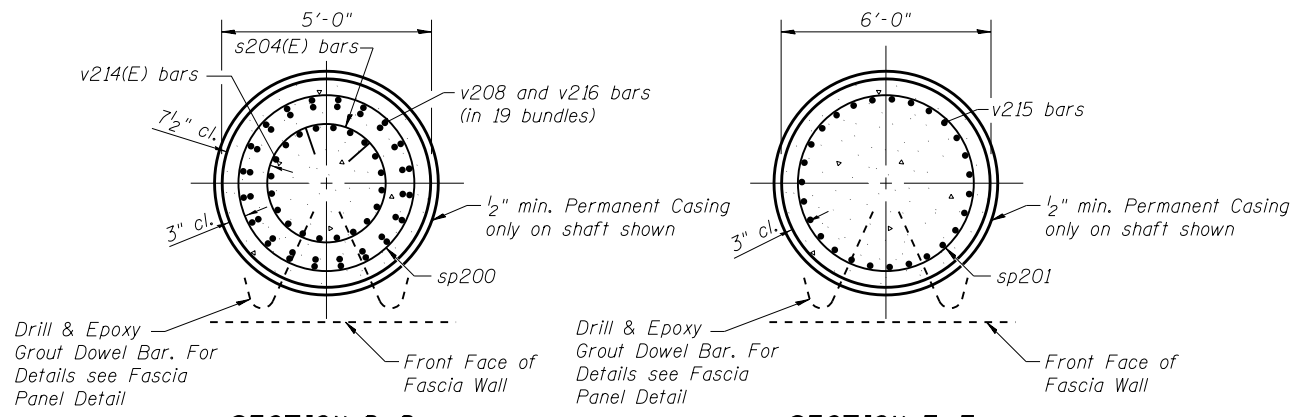


**WEST ABUTMENT BILL OF MATERIAL**

Bar	No.	Size	Length	Shape
a200(E)	4	#5	11'-9"	
a201(E)	4	#5	2'-4"	
b200(E)	26	#5	4'-0"	
d200(E)	560	#5	1'-11"	
d201(E)	11	#5	2'-10"	
d202(E)	22	#5	7'-7"	
e200(E)	12	#5	9'-6"	
h200(E)	36	#5	27'-10"	
h201(E)	15	#5	27'-10"	
h202(E)	22	#5	1'-4"	
h203(E)	16	#4	5'-10"	
h204(E)	16	#4	5'-10"	
h205(E)	16	#5	1'-4"	
h206(E)	24	#5	9'-6"	
h207(E)	8	#5	5'-0"	
h208(E)	93	#5	31'-2"	
h209(E)	16	#5	9'-6"	
h210(E)	31	#5	22'-7"	
p200(E)	36	#7	32'-5"	
p201(E)	18	#6	31'-6"	
p202(E)	8	#5	34'-4"	
p203(E)	8	#5	27'-10"	
p204(E)	8	#5	14'-10"	
p205(E)	14	#9	18'-2"	
p206(E)	3	#6	18'-2"	
s200(E)	176	#4	11'-2"	
s201(E)	88	#4	6'-2 1/2"	
s202(E)	147	#4	4'-6"	
s203(E)	20	#4	6'-11"	
s204(E)	13	#5	12'-8 3/8"	
sp200	12	#6	85'-9"	
sp201	2	#6	85'-9"	
u200(E)	5	#6	23'-6"	
u201(E)	5	#6	15'-6"	
v200(E)	78	#5	2'-10"	
v201(E)	78	#5	4'-8"	
v202(E)	78	#6	9'-6"	
v203(E)	78	#6	7'-0"	
v204(E)	6	#6	13'-0"	
v205(E)	12	#4	6'-0"	
v206(E)	12	#4	6'-0"	
v207(E)	6	#6	11'-7"	
v208	1824	#14	23'-6"	
v209(E)	24	#5	4'-1"	
v210(E)	88	#5	14'-8"	
v211(E)	11	#6	8'-0"	
v212(E)	22	#6	9'-0"	
v213(E)	22	#5	14'-8"	
v214(E)	20	#9	12'-1"	
v215	162	#11	35'-9"	
v216	1824	#14	19'-6"	
Granular Backfill for Structures		Cu. Yd.	236	
Structure Excavation		Cu. Yd.	712	
Concrete Structures		Cu. Yd.	112	
Concrete Superstructure		Cu. Yd.	13	
Reinforcement Bars		Pound	463690	
Reinforcement Bars, Epoxy Coated		Pound	286410	
Permanent Casing		Foot	172	
Drilled Shaft In Soil		Cu. Yd.	931	
Concrete Sealer		Sq. Ft.	2499	
Geocomposite Wall Drain		Sq. Yd.	31	
Pipe Underdrain for Structures 4"		Foot	105	
Class SI Concrete Miscellaneous		Cu. Yd.	41	
Crosshole Sonic Logging		Each	1	

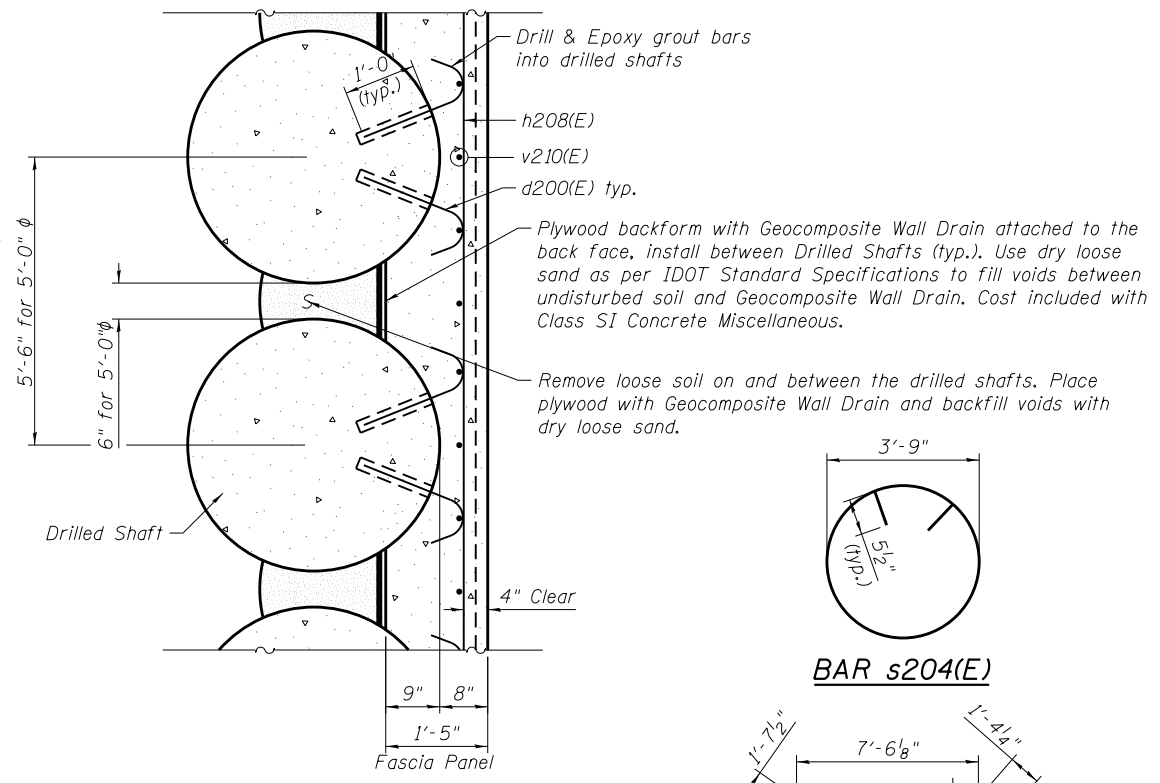


**SECTION D-D**

**SECTION E-E**

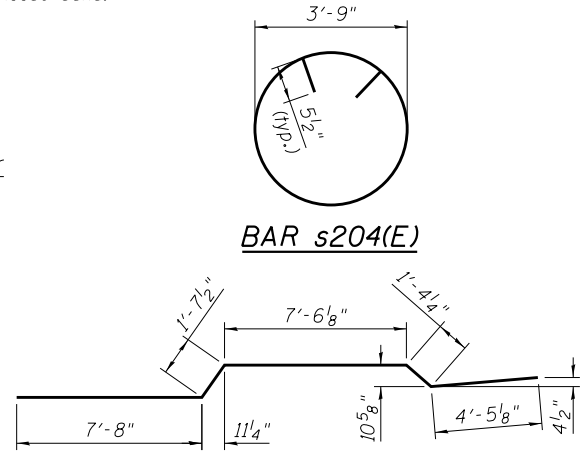
**NOTES:**

- When splicing spiral reinforcement is necessary, the spiral shall be provided with 1/2 extra turns at the ends to be spliced. These additional turns shall either be welded together according to AWS D1.4 or shall both terminate with a 135° standard hook.
- Drilling and grouting of d200(E) bars included with Class SI Concrete Special (Fascia Wall) pay item.
- Bars noted thus, 3x2-#5 indicates 3 lines of bars with 2 lengths of bars per line.
- For details of Bar Splicers see sheet S1-45.
- Contractor to use Mechanical Splicers in drilled shafts that will fit between spirals.

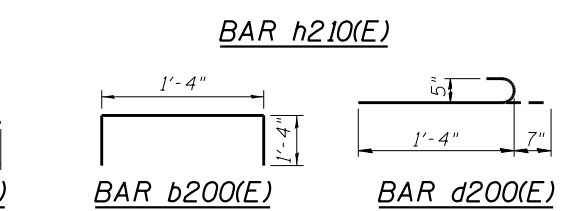


**FASCIA PANEL DETAIL**

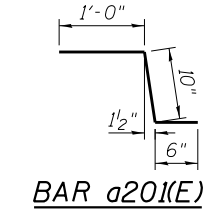
(See next sheet for additional details.)



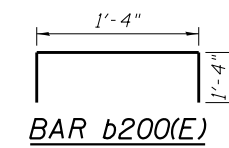
**BAR s204(E)**



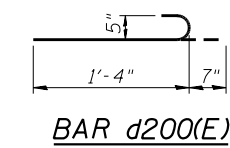
**BAR h210(E)**



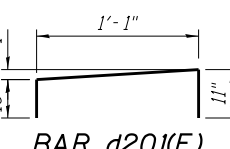
**BAR a201(E)**



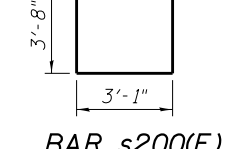
**BAR b200(E)**



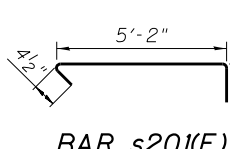
**BAR d200(E)**



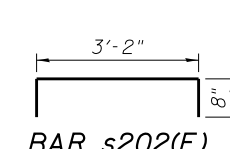
**BAR d201(E)**



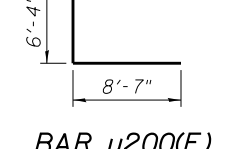
**BAR s200(E)**



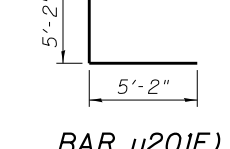
**BAR s201(E)**



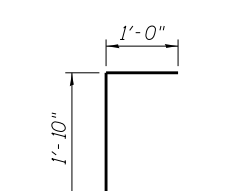
**BAR s202(E)**



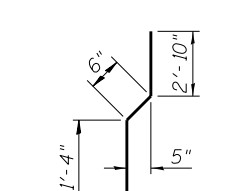
**BAR u200(E)**



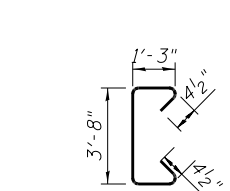
**BAR u201(E)**



**BAR v200(E)**

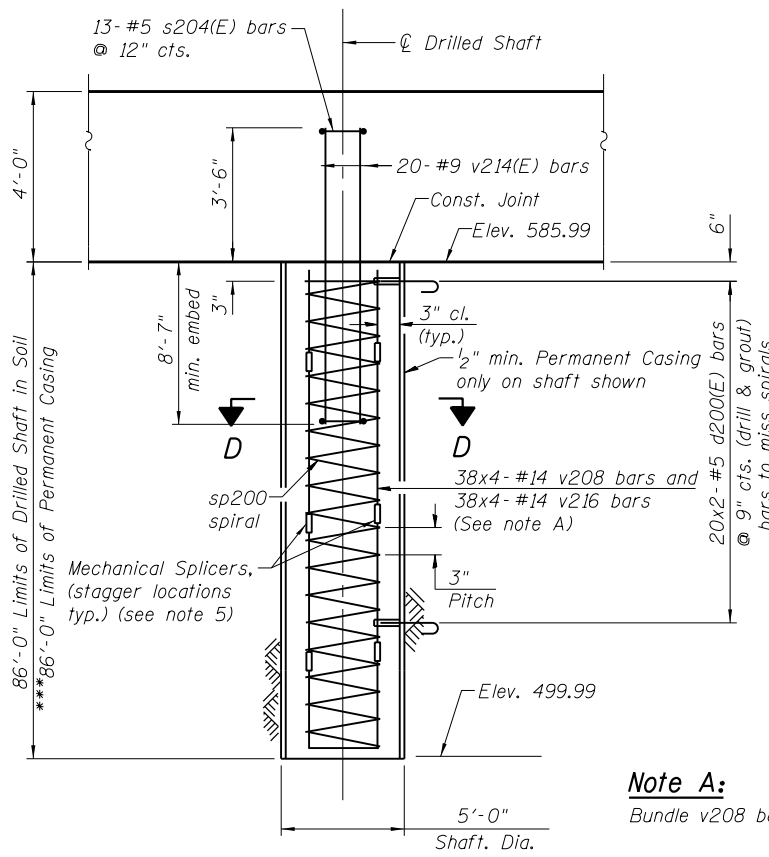


**BAR v201(E)**



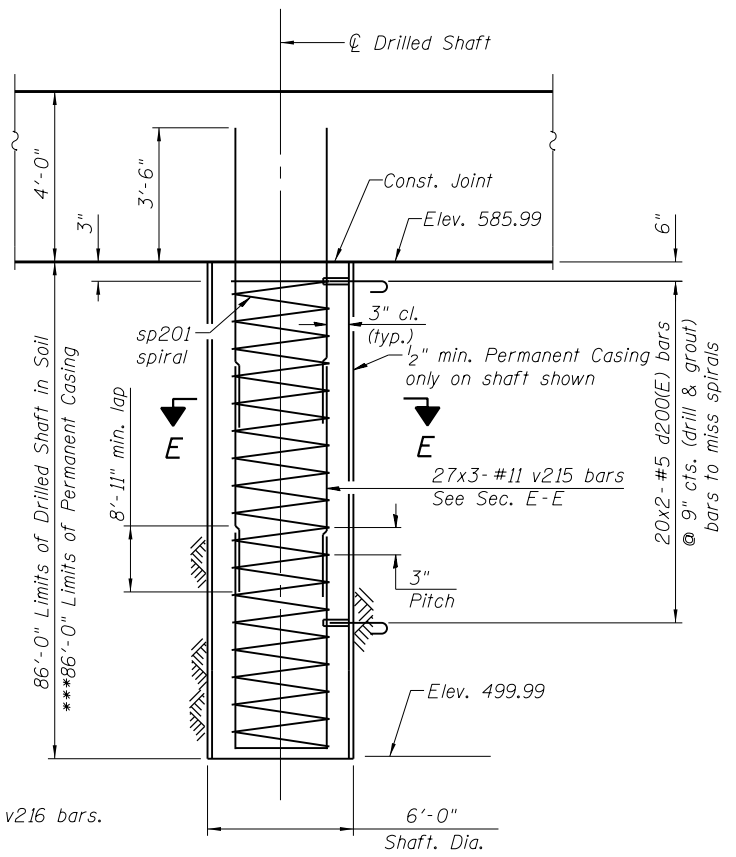
**BAR s203(E)**

\* Length is height of spiral  
 \*\* Shown for information only. Cost included with Class SI Concrete Special (Fascia Wall).



**ABUTMENT SHAFT ELEVATION**

5'-0" Shaft



**ABUTMENT SHAFT ELEVATION**

6'-0" Shaft

**Note A:**  
 Bundle v208 bars with v216 bars.

\*\*\* Contractor may need to increase the casing thickness to withstand the installation process. See Article 516.06(d) of the Standard Specifications.



USER NAME = dunkerleyb	DESIGNED - EJO	REVISED
PLOT SCALE = N.T.S.	CHECKED - ATB	REVISED
PLOT DATE = 9/15/2013	DRAWN - BRD	REVISED
	CHECKED - EJO	REVISED

**STATE OF ILLINOIS  
 DEPARTMENT OF TRANSPORTATION**

**WEST ABUTMENT DETAILS  
 STRUCTURE NO. 016-1713**

SHEET NO. S1-36 OF S1-48 SHEETS

F.A.I. RTE. 90/94/290	SECTION 2013-008R	COUNTY COOK	TOTAL SHEETS 559	SHEET NO. 286
CONTRACT NO. 60W26			ILLINOIS FED. AID PROJECT	

0161713-60W26-S36-Abutment