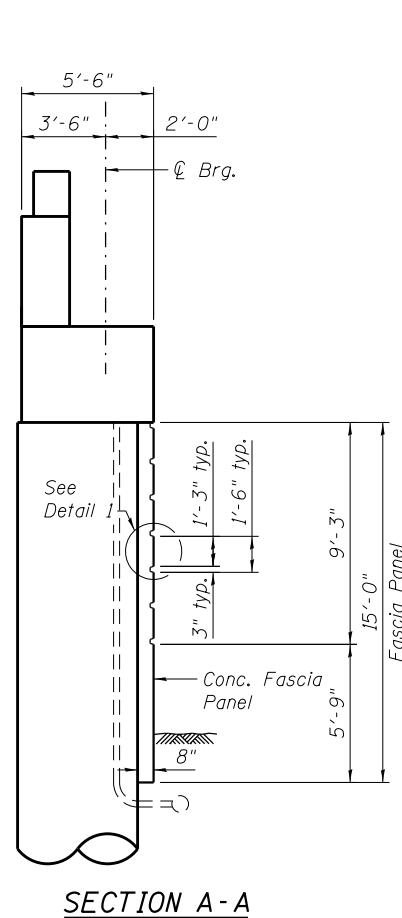
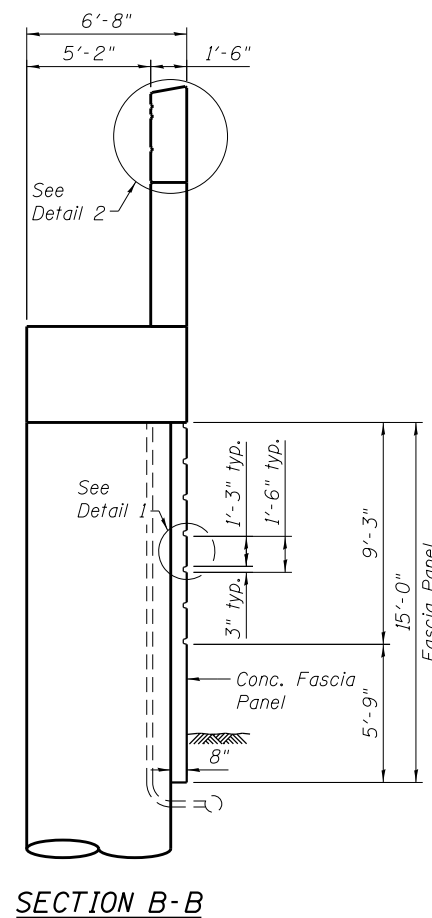


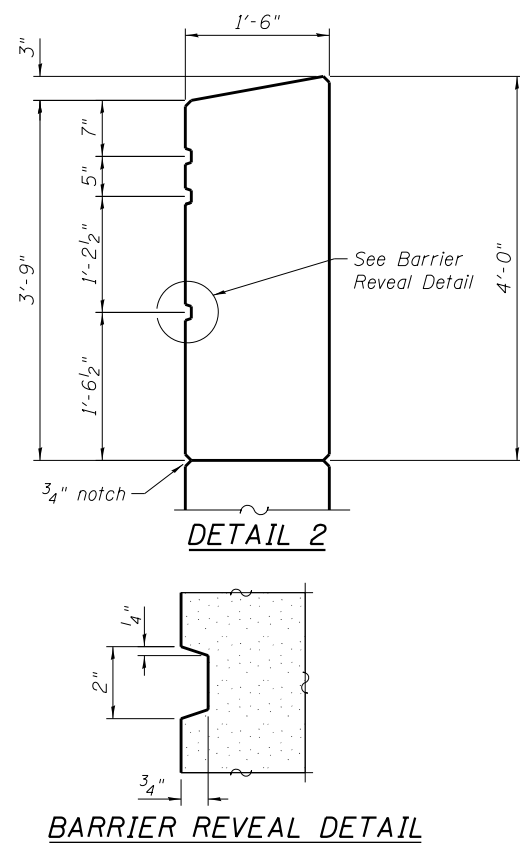
WEST ABUTMENT ELEVATION
(Looking West)



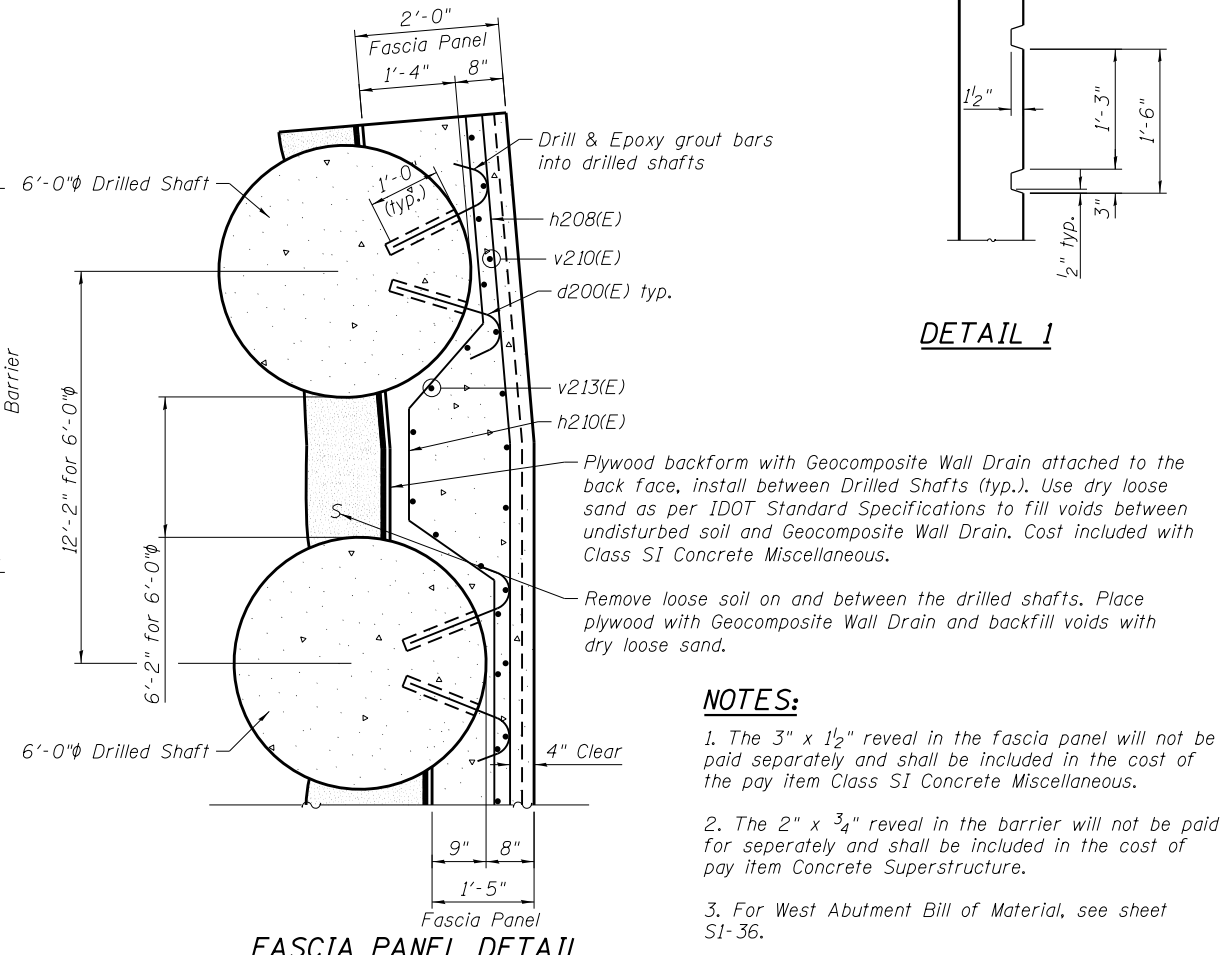
SECTION A-A



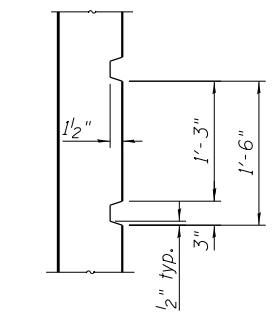
SECTION B-B



BARRIER REVEAL DETAIL



FASCIA PANEL DETAIL



DETAIL 1

- NOTES:**
1. The 3" x 1/2" reveal in the fascia panel will not be paid separately and shall be included in the cost of the pay item Class SI Concrete Miscellaneous.
 2. The 2" x 3/4" reveal in the barrier will not be paid for separately and shall be included in the cost of pay item Concrete Superstructure.
 3. For West Abutment Bill of Material, see sheet SI-36.

0161713-60W26-S37-Abutment



USER NAME = dunkerleyb	DESIGNED - EJO	REVISD
PLOT SCALE = N.T.S.	CHECKED - ATB	REVISD
PLOT DATE = 9/15/2013	DRAWN - BRD	REVISD
	CHECKED - EJO	REVISD

STATE OF ILLINOIS
DEPARTMENT OF TRANSPORTATION

WEST ABUTMENT ARCHITECTURAL DETAILS
STRUCTURE NO. 016-1713

SHEET NO. S1-37 OF S1-48 SHEETS

F.A.I. RTE. 90/94/290	SECTION 2013-008R	COUNTY COOK	TOTAL SHEETS 559	SHEET NO. 287
CONTRACT NO. 60W26			ILLINOIS FED. AID PROJECT	