

FOR INFORMATION ONLY

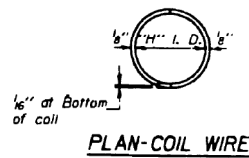
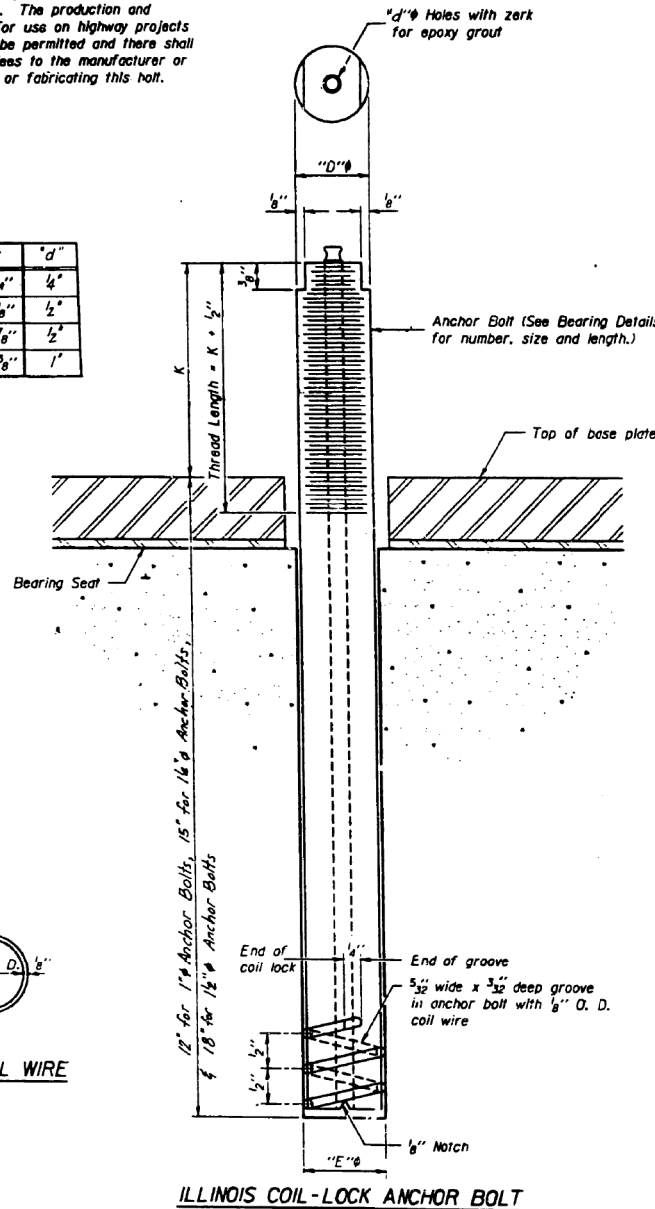
STATE OF ILLINOIS  
DEPARTMENT OF TRANSPORTATION

SECTION	COUNTY	TOTAL SHEETS	SHEET NO.
90/94	COOK	79	74
STA.	TO STA.		
FED. AID PROJ. NO.	FED. AID PROJECT		

\* 1985-080 R

The Illinois Coil-Lock Anchor Bolt is a proprietary item which is the property of the Illinois Department of Transportation. Use, reproduction or disclosure without express written permission is prohibited and protected under Federal copyright laws. The production and the fabrication of this bolt for use on highway projects in the State of Illinois shall be permitted and there shall be no incurred charges or fees to the manufacturer or the fabricator for producing or fabricating this bolt.

D	E	H	K	"d"
1"	1 1/8"	3/8"	1 3/8"	1/4"
1 1/2"	1 5/8"	1 5/8"	2 1/8"	1/2"
2"	2 1/8"	1 3/8"	2 7/8"	3/4"
2 1/2"	2 5/8"	2 3/8"	3 3/8"	1"



**MATERIALS FOR ILLINOIS COIL-LOCK ANCHOR BOLT**

The anchor bolt shall be fabricated from cold drawn or hot finished seamless carbon steel mechanical tubing conforming to ASTM A513, Grade 1026 and supplied with hexagonal nuts and cut washers.  
The coil wire shall be made of any suitable soft steel wire.  
The finished anchor bolt shall be cleaned of rust and other foreign materials and wrapped or packaged to prevent contamination until they are installed.  
The epoxy grout shall be a two-component, epoxy resin bonding system conforming to ASTM C881, Type I, Grade I and of a Class suitable for the temperature of installation.

**INSTALLATION PROCEDURE for the ILLINOIS COIL-LOCK ANCHOR BOLT**

1. With the coil wire in place, the bolt shall be inserted into the hole and turned clockwise to a snug fit in the hole. Nut and washer shall be placed on the bolt. The nut shall be tensioned until the steel base plate is held securely to the concrete bearing seat.
2. Epoxy grout shall be pumped through the zerk fitting with a pressure gun. Pumping shall continue until the epoxy overflows the hole around the bolt shank. After pumping is discontinued, excess epoxy shall be immediately wiped off.

**ALTERNATE ANCHOR BOLTS**

The Contractor may use, at his option, the capsule or the adhesive cartridge type anchor rods that have been previously tested and given a prior approval by the Department. The Contractor shall install these anchor rods in pre-drilled holes in accordance with the manufacturer's recommendations and procedures.  
The capsule or the adhesive cartridge type anchor rods shall be a two part system composed of:  
1. A threaded rod stud with nut and washer conforming to ASTM A307. (Unless Noted)  
2. A sealed glass capsule or a sealed glass adhesive cartridge containing premeasured amounts of the adhesive chemical.

**GENERAL NOTES**

Holes in the masonry for anchor bolts shall be drilled through the base plates to the diameter and depth shown or in accordance with the manufacturer's recommendation after beams or girders have been erected and adjusted.  
Prior to setting the bolts, the holes shall be dry and all dirt and loose particles shall be removed by the use of compressed air or vacuum.  
The anchor bolts, furnished and installed and including the epoxy grout or capsules shall not be paid for separately but shall be included in the unit bid price each for "Expansion and Fixed Bearings".  
Anchor bolt as shown on this drawing to be used at all locations, unless shown otherwise.

Anchor bolts, nuts and washers shall be completely coated by either the hot-dipped process conforming with ASTM A133 or the mechanical plating method conforming to ASTM B495, Class 50. Zinc coated nuts shall be lapped oversize in accordance with the requirements of ASTM A291 and shall meet the supplementary requirements S1.1 thru S1.2.1 of the same specification for lubricant and testing.

SHEET NO. 11 OF 62

REVISIONS	
Name	Date

STATE OF ILLINOIS  
DEPARTMENT OF TRANSPORTATION  
F.A.I. ROUTE 90/94 (DAN RYAN EXPRESSWAY)  
SECTION 1985-080 R - COOK COUNTY  
ROADWAY GRADING AND PAVING  
MISCELLANEOUS DETAILS - ALL STRUCTURES  
ANCHOR BOLT DETAILS  
Scale: N/A  
Date: AUGUST 14, 1987  
Drawn By: REP  
Checked By: WPK  
ENVIROTECH ENGINEERS INC.  
Chicago, Illinois

FILE PATH = C:\Projects\19-0820 - Circle 60W26 As-Built\Final\0160W26-sht-AS-BUILT-11.dgn

DESIGNED -	REVISED -
DRAWN -	REVISED -
CHECKED -	REVISED -
DATE - 07/15/13	REVISED -

STATE OF ILLINOIS  
DEPARTMENT OF TRANSPORTATION

EXISTING AS-BUILTS SN 016-1087  
SCALE: NTS SHEET AS-11 OF AS-62 SHEETS STA. TO STA.

F.A.I. RTE.	SECTION	COUNTY	TOTAL SHEETS	SHEET NO.
90/94/290	2013-008R	COOK	559	309
CONTRACT NO. 60W26				
ILLINOIS FED. AID PROJECT				