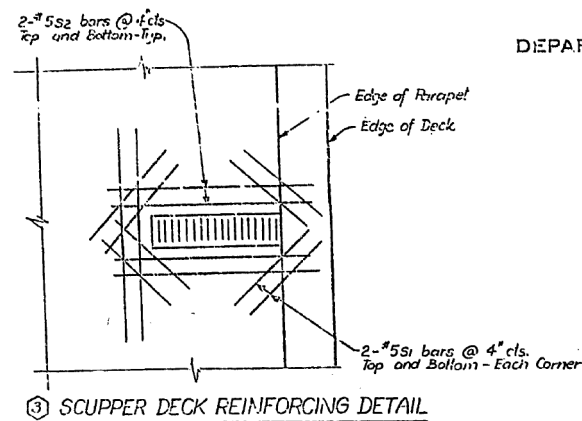
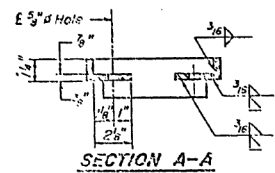


FOR INFORMATION ONLY

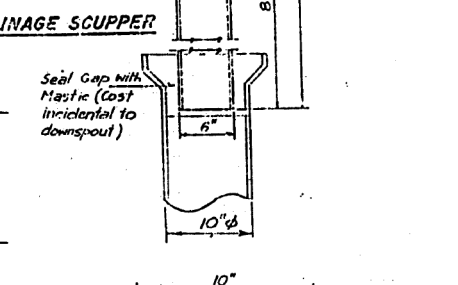
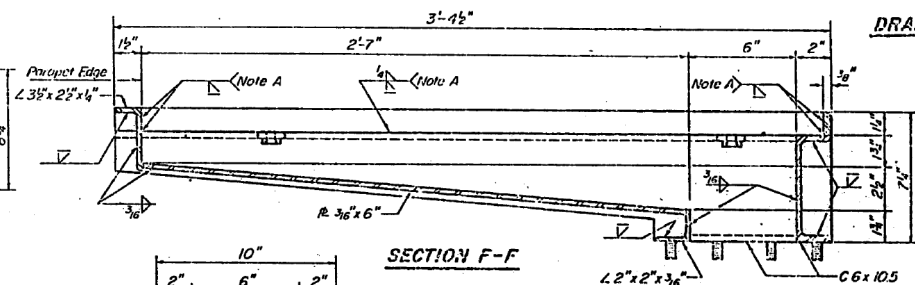
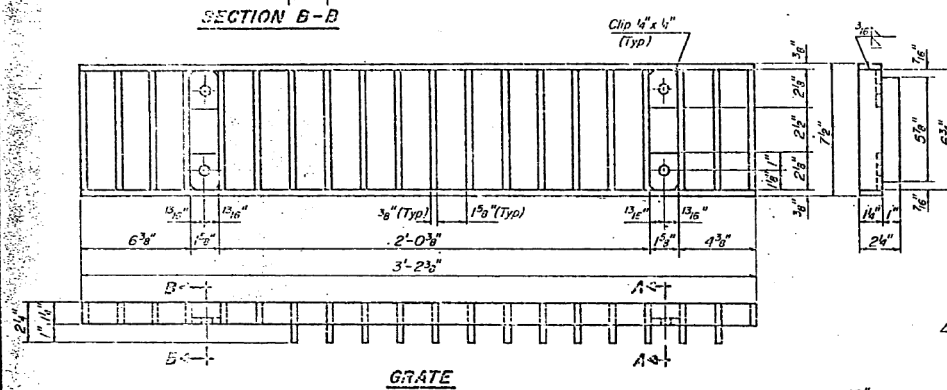
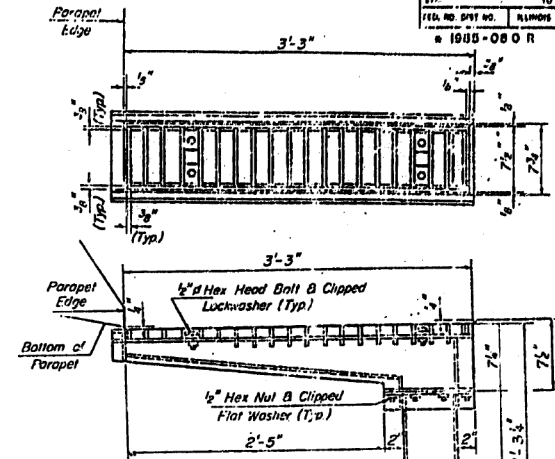
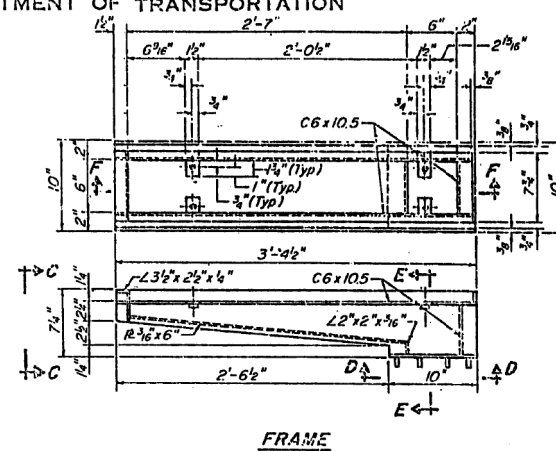
REINFORCEMENT BAR SCHEDULE *

Mark.	No.	Size	Length	Shape
Str(E)	16	#5	2'-0"	
Str(E)	12	#5	4'-0"	

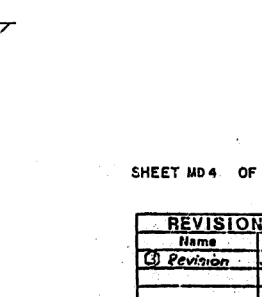
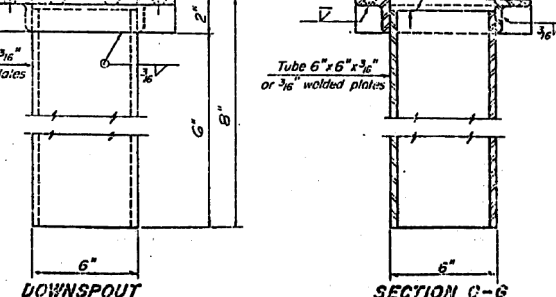
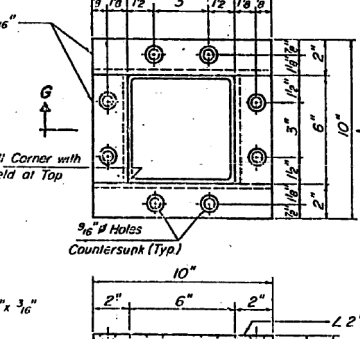
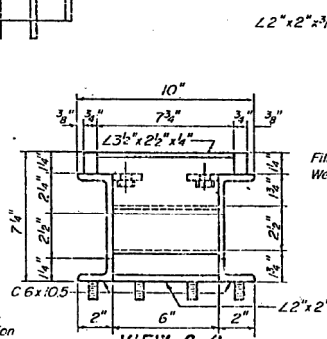
* For scupper



STATE OF ILLINOIS
DEPARTMENT OF TRANSPORTATION



Notes:
Hollow structural steel tubing shall conform to the requirements of A.S.T.M. designation A-500 Grade B, or A-501 Structural Steel Tubing.
All other shapes, plates and bars shall conform to the requirements of A.A.S.H.T.O. M 183.
Bolts, studs, washers and nuts shall conform to the requirements of A.S.T.M. A-307.
The Grate, Frame, and Downspout shall be galvanized after shop fabrication in accordance with A.A.S.H.T.O. 11-111 & A.S.T.M. A-395.
All bolts, washers and nuts shall be galvanized in accordance with A.A.S.H.T.O. M 232.
Cost of the Grate, Frame, Downspout, Bolts, Washers and Nuts including complete installation of Scupper shall be paid for at the unit bid price for "DRAINAGE SCUPPERS"



BILL OF MATERIAL

ITEM	UNIT	QUANTITY
Drainage Scupper	Each	4

SHEET MD 4 OF 8

STATE OF ILLINOIS
DEPARTMENT OF TRANSPORTATION
F.A.I. ROUTE 90/94 (DAN RYAN EXPRESSWAY)
SECTION 1806-080R - COOK COUNTY
ROADWAY GRADING AND PAVING
MISCELLANEOUS DETAILS - ALL STRUCTURES
DRAINAGE SCUPPER, STEEL

Scale: NONE
Date: AUGUST 14, 1987
Drawn By: REP
Checked By: JPK
ENVIRODYNE ENGINEERS INC.

REVISIONS	Name	Date
1	Revision	3-11-88