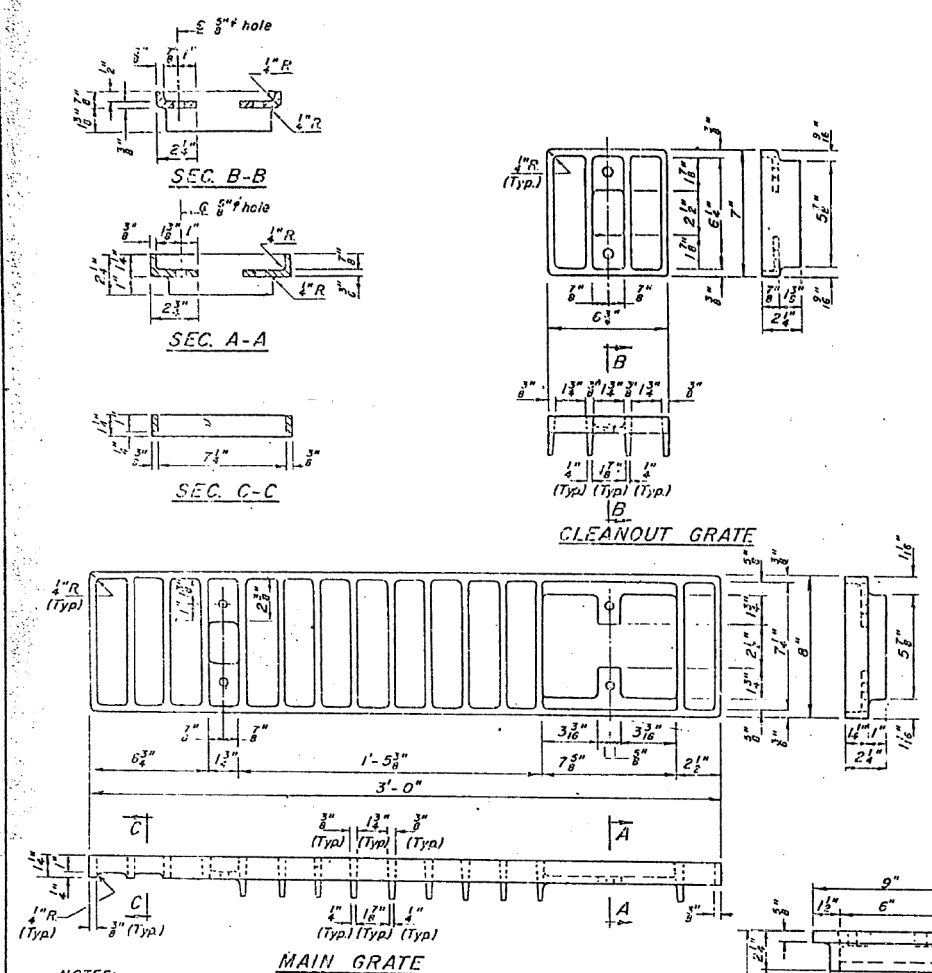


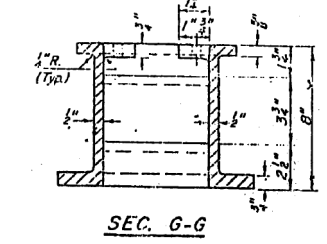
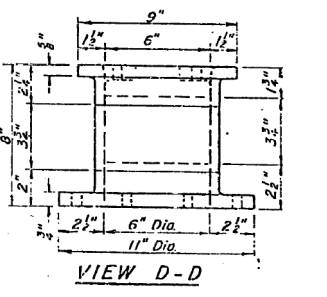
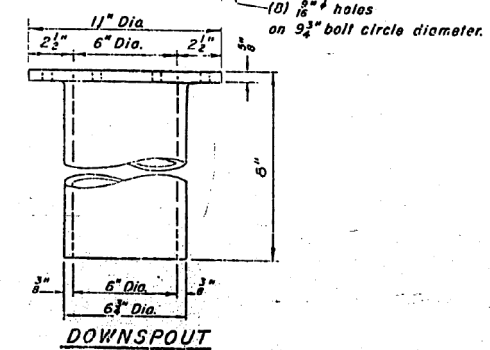
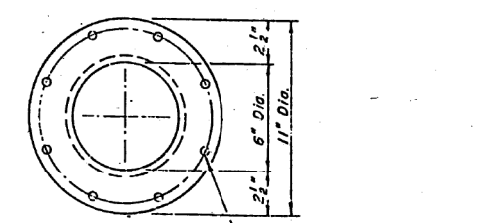
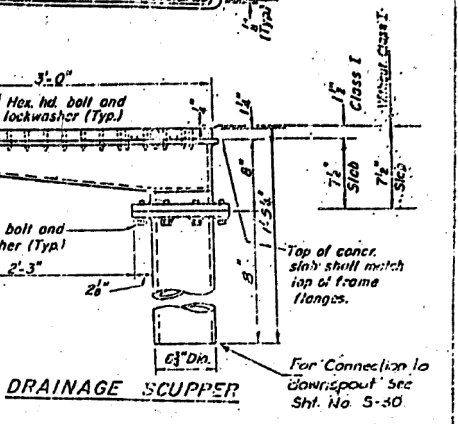
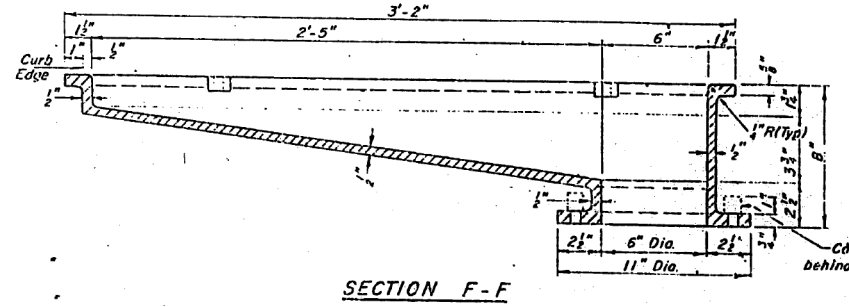
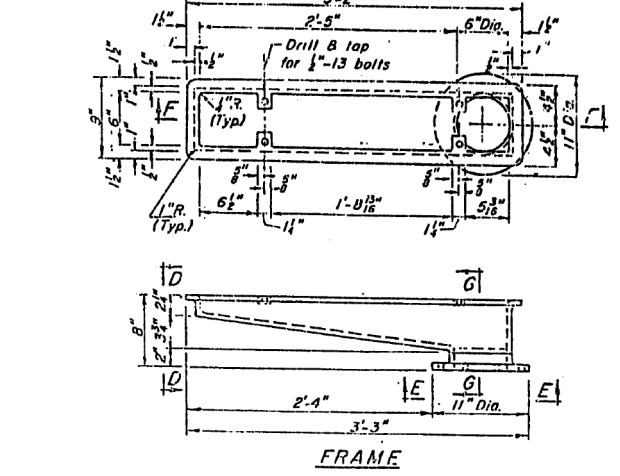
FOR INFORMATION ONLY

STATE OF ILLINOIS
DEPARTMENT OF TRANSPORTATION

PROJECT NO.	SECTION	COUNTY	TOTAL SHEETS	SHEET NO.
1-90/94		COOK	70	78
STA.	TO STA.			
10+00	10+50			



NOTES:
 All cast iron parts shall be gray iron conforming to the requirements of AASHTO M103, Class 30.
 Bolts, washers and nuts shall conform to the requirements of ASTM A-307.
 All bolts, washers and nuts shall be galvanized in accordance with AASHTO M 232.
 The waterproofing membrane system shall be installed such that the membrane covers the frame flanges and extends down into the frame with the grates placed on top of the membrane.
 Cost of the Main Grate, Cleanout Grate, Frame, Downspout, Bolts, Washers and Nuts including complete installation of Scupper shall be paid for at the unit bid price for "DRAINAGE SCUPPERS".
 The Contractor may use at his option steel frames and steel grates or cast frames and cast grates, but will not be allowed to use steel grates with cast frames nor cast grates with steel frames.



SHEET NO. 5 OF 8		STATE OF ILLINOIS DEPARTMENT OF TRANSPORTATION	
F.A.I. ROUTE 90/94 (DAN RYAN EXPRESSWAY)		SECTION 1905-008R - COOK COUNTY	
ROADWAY GRADING AND PAVING		MISCELLANEOUS DETAILS - ALL STRUCTURES	
DRAINAGE SCUPPER, ALTERNATE CAST IRON		Scale: NONE	
Date: AUGUST 15, 1987		Drawn By: REP	
Checked By: WPK		ENVIRONMENTAL ENGINEERS INC.	

REVISIONS	
Name	Date
WPK	8-11-87

FILE PATH = C:\Projects\15-0820 - Circle 60W26 As-Built\15-0820-sht-AS-BUILT-15.dgn

DESIGNED -	REVISOR -
DRAWN -	REVISION -
CHECKED -	REVISION -
DATE - 07/15/13	REVISION -

STATE OF ILLINOIS
DEPARTMENT OF TRANSPORTATION

EXISTING AS-BUILTS SN 016-1087

SCALE: NTS SHEET AS-15 OF AS-62 SHEETS STA. TO STA.

F.A.I. RTE.	SECTION	COUNTY	TOTAL SHEETS	SHEET NO.
90/94/290	2013-008R	COOK	559	313
CONTRACT NO. 60W26				
ILLINOIS FED. AID PROJECT				