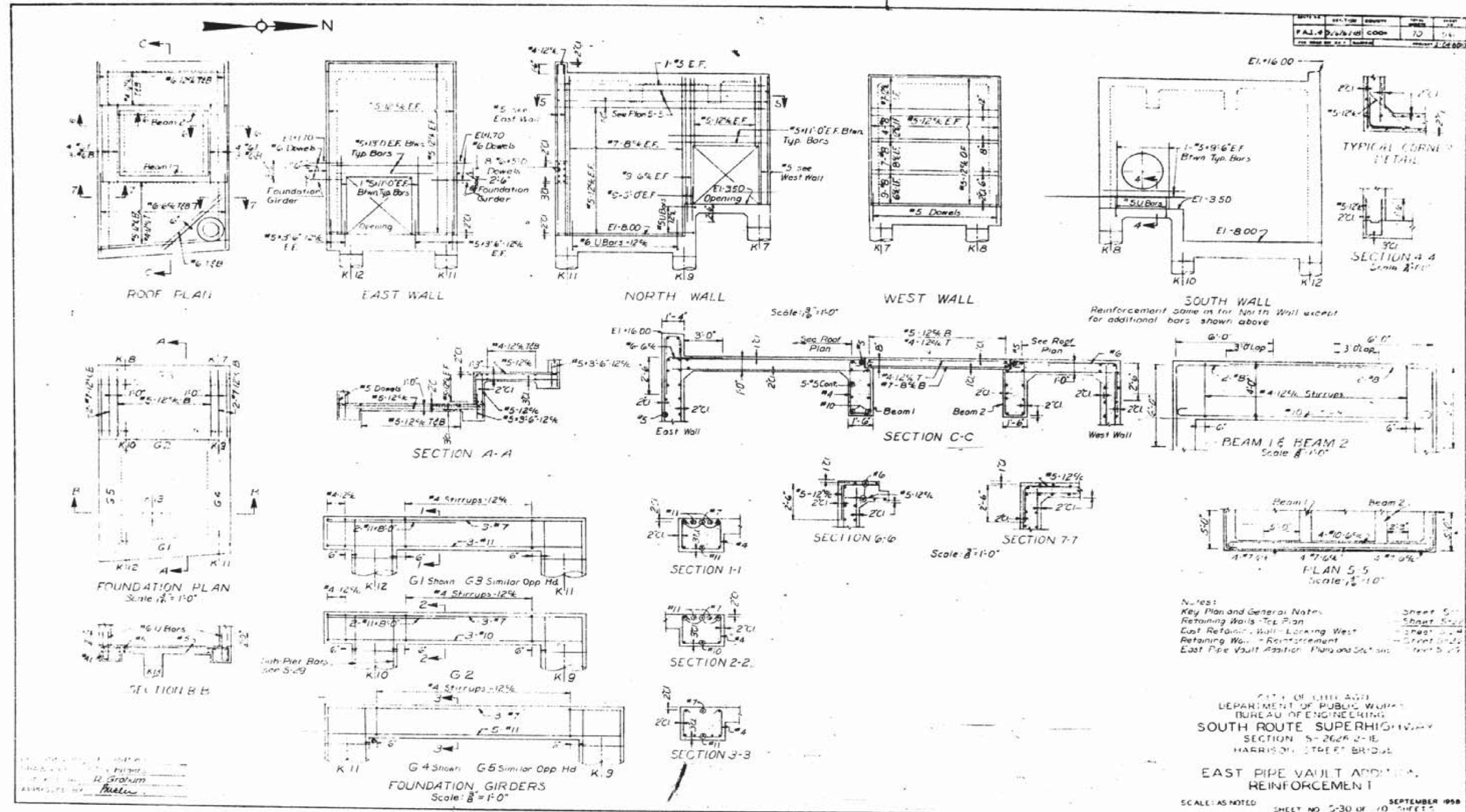


FOR INFORMATION ONLY



Notes:
 Key Plan and General Notes - Sheet 5-1
 Retaining Walls - See Plan - Sheet 5-2
 East Retaining Wall Looking West - Sheet 5-3
 Retaining Wall - Reinforcement - Sheet 5-4
 East Pipe Vault Addition - Plans and Sections - Sheet 5-5

CITY OF ILLINOIS
 DEPARTMENT OF PUBLIC WORKS
 BUREAU OF ENGINEERING
 SOUTH ROUTE SUPERHIGHWAY
 SECTION 5-262R 2-1E
 HARRISON STREET BRIDGE
 EAST PIPE VAULT ADDITION
 REINFORCEMENT

SCALE: AS NOTED SHEET NO. 5-30 OF 10 SHEETS SEPTEMBER 1958

FILE PATH = C:\Projects\13-0820 - Circle 60W26 AS-Built\Final\0160W26-sht-AS-BUILT-51.dgn

D160W26-sht-AS-BUILT-51.dgn	DESIGNED -	REVISED -
USER NAME = auyeungh	DRAWN -	REVISED -
PLOT SCALE = 1.0000' / in.	CHECKED -	REVISED -
PLOT DATE = 8/16/2013	DATE = 07/15/13	REVISED -

STATE OF ILLINOIS
 DEPARTMENT OF TRANSPORTATION

EXISTING AS-BUILTS SN 016-1087

SCALE: NTS SHEET AS-51 OF AS-62 SHEETS STA. TO STA.

F.A.I. R.T.E.	SECTION	COUNTY	TOTAL SHEETS	SHEET NO.
90/94/290	2013-008R	COOK	559	349
CONTRACT NO. 60W26				
ILLINOIS FED. AID PROJECT				