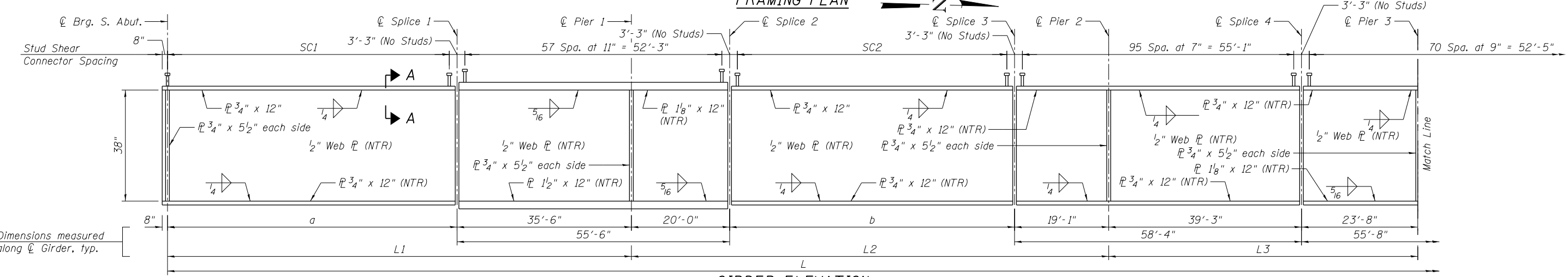


FRAMING PLAN



GIRDER ELEVATION

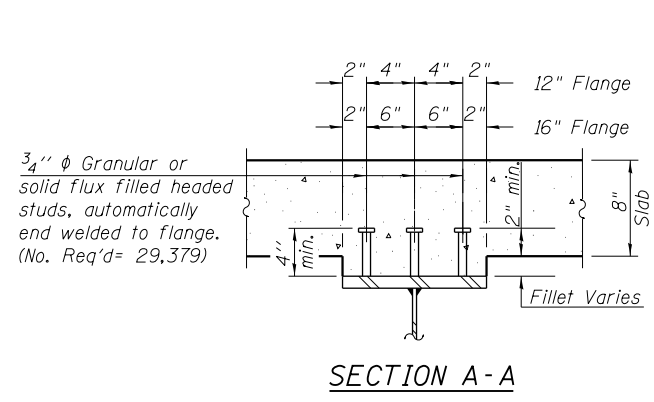
"NTR" denotes plates to which notch toughness requirements are applicable.

BEAM DIMENSIONS

Girder	L	L1	L2	L3	a	b
1	452'-2 1/8"	83'-1 3/16"	57'-7 3/16"	62'-11"	47'-7 3/16"	18'-6 3/16"
2	459'-2 1/8"	83'-11 1/2"	60'-5 1/8"	62'-11"	48'-5 1/2"	21'-4 1/8"
3	466'-2 1/8"	84'-9 3/16"	63'-3 1/16"	62'-11"	49'-3 3/16"	24'-2 1/16"
4	473'-2 1/8"	85'-6 7/8"	66'-1"	62'-11"	50'-0 7/8"	27'-0"
5	480'-2 1/8"	86'-4 9/16"	68'-10 15/16"	62'-11"	50'-10 9/16"	29'-9 15/16"
6	487'-2 1/8"	87'-2 1/4"	71'-8 1/4"	62'-11"	51'-8 1/4"	32'-7 15/16"
7	494'-2 1/8"	87'-11 5/16"	74'-6 3/4"	62'-11"	52'-5 5/16"	35'-5 3/4"
8	501'-2 1/16"	88'-9 5/8"	77'-4 1/16"	62'-11"	53'-3 5/8"	38'-3 1/16"
9	508'-2 1/16"	89'-7 5/16"	80'-2 5/8"	62'-11"	54'-1 5/16"	41'-1 5/16"
10	515'-2 1/16"	90'-5"	83'-0 9/16"	62'-11"	54'-11"	43'-11 9/16"
11	522'-2 1/16"	91'-2 1/16"	85'-10 1/2"	62'-11"	55'-8 1/16"	46'-9 1/2"
12	529'-2 1/16"	92'-0 3/8"	88'-8 7/16"	62'-11"	56'-6 3/8"	49'-7 7/16"
13	536'-2 1/16"	92'-10 1/16"	91'-6 5/16"	62'-11"	57'-4 1/16"	52'-5 5/16"
14	543'-2 1/16"	93'-7 3/4"	94'-4 1/4"	62'-11"	58'-1 3/4"	55'-3 1/4"
15	550'-2 1/16"	94'-5 7/16"	97'-2 3/16"	62'-11"	58'-11 7/16"	58'-1 3/16"

STUD SHEAR CONNECTOR SPACING

Girder	SC1	SC2
1	62 Spa. at 9" = 46'-0"	21 Spa. at 9" = 15'-3"
2	63 Spa. at 9" = 46'-10"	25 Spa. at 9" = 18'-1"
3	64 Spa. at 9" = 47'-8"	28 Spa. at 9" = 20'-11"
4	65 Spa. at 9" = 48'-5"	32 Spa. at 9" = 23'-9"
5	66 Spa. at 9" = 49'-3"	36 Spa. at 9" = 26'-7"
6	67 Spa. at 9" = 50'-1"	40 Spa. at 9" = 29'-5"
7	68 Spa. at 9" = 50'-10"	43 Spa. at 9" = 32'-3"
8	69 Spa. at 9" = 51'-8"	47 Spa. at 9" = 35'-0"
9	70 Spa. at 9" = 52'-6"	51 Spa. at 9" = 37'-10"
10	72 Spa. at 9" = 53'-3"	55 Spa. at 9" = 40'-8"
11	73 Spa. at 9" = 54'-1"	59 Spa. at 9" = 43'-6"
12	74 Spa. at 9" = 54'-11"	62 Spa. at 9" = 46'-4"
13	75 Spa. at 9" = 55'-8"	66 Spa. at 9" = 49'-2"
14	76 Spa. at 9" = 56'-6"	70 Spa. at 9" = 52'-0"
15	77 Spa. at 9" = 57'-4"	74 Spa. at 9" = 54'-10"



SECTION A-A

Notes:
 All plates of the girders, including bearing stiffeners and splice plates, shall be AASHTO M 270, Grade 50.
 All diaphragms, angles, fill plates and connecting plates may be AASHTO M270, Grade 36.
 Load carrying components designated "NTR" shall conform to the Supplemental Requirements for Notch Toughness, Zone 2.
 All diaphragms shall be installed as steel is erected and secured with erection pins and bolts except as otherwise noted. Individual diaphragms at supports may be temporarily disconnected to install bearing anchor rods.
 Work this sheet with Sheet S2-44 of S2-81.
 For diaphragm details, see Sheet S2-48 of S2-81.
 All structural steel shall be hot dip galvanized. Cost included with Furnishing and Erecting Structural Steel.
 For notes on galvanized steel, see Sheet S2-02 of S2-81.

4:33:16 PM 0161716-60W26-S043-FramePlan.1.dgn



USER NAME = rlschultz	DESIGNED - WJC	REVISED
PLOT SCALE = 10:8 in / in.	CHECKED - DL	REVISED
PLOT DATE = 9/15/2013	DRAWN - RLS	REVISED
	CHECKED - DL	REVISED

**STATE OF ILLINOIS
DEPARTMENT OF TRANSPORTATION**

**FRAMING PLAN 1
STRUCTURE NO. 016-1716**

SHEET NO. S2-43 OF S2-81 SHEETS

F.A.U. RTE. 3730	SECTION 2013-008R	COUNTY COOK	TOTAL SHEETS 559	SHEET NO. 403
CONTRACT NO. 60W26			ILLINOIS FED. AID PROJECT	