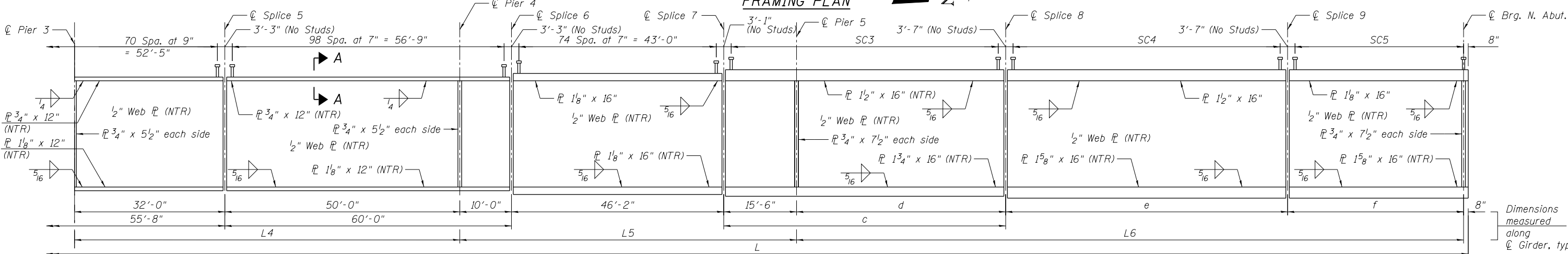


FRAMING PLAN



GIRDER ELEVATION

"NTR" denotes plates to which notch toughness requirements are applicable.

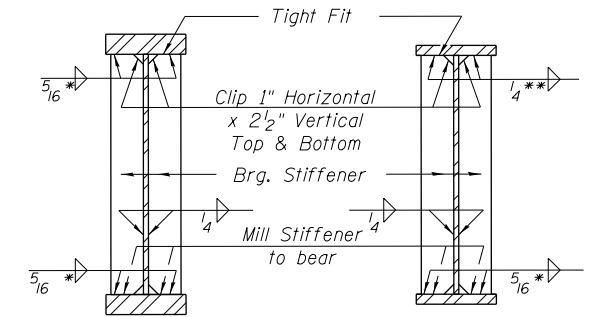
BEAM DIMENSIONS

Girder	L	L4	L5	L6	c	d	e	f
1	452'-2 ¹ / ₈ "	82'-0"	71'-8"	94'-10 ¹ / ₈ "	52'-1 ³ / ₁₆ "	36'-7 ¹³ / ₁₆ "	36'-5 ³ / ₈ "	21'-9"
2	459'-2 ¹ / ₈ "	82'-0"	71'-8"	98'-2 ¹ / ₂ "	52'-8 ¹ / ₂ "	37'-2 ¹ / ₂ "	38'-1 ⁹ / ₁₆ "	22'-10 ⁷ / ₁₆ "
3	466'-2 ¹ / ₈ "	82'-0"	71'-8"	101'-6 ⁷ / ₈ "	53'-3 ¹ / ₄ "	37'-9 ¹ / ₄ "	39'-9 ³ / ₁₆ "	23'-11 ⁷ / ₈ "
4	473'-2 ¹ / ₈ "	82'-0"	71'-8"	104'-11 ¹ / ₄ "	53'-10"	38'-4"	41'-5 ¹⁵ / ₁₆ "	25'-1 ³ / ₈ "
5	480'-2 ¹ / ₈ "	82'-0"	71'-8"	108'-3 ⁵ / ₈ "	54'-4 ¹ / ₁₆ "	38'-10 ¹ / ₁₆ "	43'-2 ¹ / ₈ "	26'-2 ¹³ / ₁₆ "
6	487'-2 ¹ / ₈ "	82'-0"	71'-8"	111'-8"	54'-11 ¹ / ₁₆ "	39'-5 ⁷ / ₁₆ "	44'-10 ⁵ / ₁₆ "	27'-4 ¹ / ₄ "
7	494'-2 ¹ / ₈ "	82'-0"	71'-8"	115'-0 ³ / ₈ "	55'-6 ³ / ₁₆ "	40'-0 ³ / ₁₆ "	46'-6 ¹ / ₂ "	28'-5 ³ / ₄ "
8	501'-2 ¹ / ₁₆ "	82'-0"	71'-8"	118'-4 ³ / ₄ "	56'-0 ⁷ / ₈ "	40'-6 ⁷ / ₈ "	48'-2 ¹ / ₁₆ "	29'-7 ³ / ₁₆ "
9	508'-2 ¹ / ₁₆ "	82'-0"	71'-8"	121'-9 ⁸ / ₁₆ "	56'-7 ⁵ / ₈ "	41'-1 ⁵ / ₈ "	49'-10 ⁷ / ₈ "	30'-8 ⁵ / ₈ "
10	515'-2 ¹ / ₁₆ "	82'-0"	71'-8"	125'-1 ¹ / ₂ "	57'-2 ³ / ₈ "	41'-8 ³ / ₈ "	51'-7 ¹ / ₁₆ "	31'-10 ¹ / ₈ "
11	522'-2 ¹ / ₁₆ "	82'-0"	71'-8"	128'-5 ⁷ / ₈ "	57'-9 ¹ / ₁₆ "	42'-3 ¹ / ₁₆ "	53'-3 ¹ / ₄ "	32'-11 ⁹ / ₁₆ "
12	529'-2 ¹ / ₁₆ "	82'-0"	71'-8"	131'-10 ¹ / ₄ "	58'-3 ¹³ / ₁₆ "	42'-9 ¹³ / ₁₆ "	54'-11 ⁷ / ₁₆ "	34'-1"
13	536'-2 ¹ / ₁₆ "	82'-0"	71'-8"	135'-2 ⁵ / ₈ "	58'-10 ⁹ / ₁₆ "	43'-4 ⁹ / ₁₆ "	56'-7 ⁵ / ₈ "	35'-2 ¹ / ₂ "
14	543'-2 ¹ / ₁₆ "	82'-0"	71'-8"	138'-7"	59'-5 ¹ / ₄ "	43'-11 ¹ / ₄ "	58'-3 ¹ / ₁₆ "	36'-3 ¹⁵ / ₁₆ "
15	550'-2 ¹ / ₁₆ "	82'-0"	71'-8"	141'-11 ³ / ₈ "	60'-0"	44'-6"	60'-0"	37'-5 ³ / ₈ "

STUD SHEAR CONNECTOR SPACING

Girder	SC3	SC4	SC5
1	49 Spa. at 1'-0" = 48'-9"	33 Spa. at 1'-0" = 32'-11"	24 Spa. at 10" = 20'-0"
2	50 Spa. at 1'-0" = 49'-4"	35 Spa. at 1'-0" = 34'-8"	26 Spa. at 10" = 21'-1"
3	50 Spa. at 1'-0" = 49'-10"	37 Spa. at 1'-0" = 36'-4"	27 Spa. at 10" = 22'-3"
4	51 Spa. at 1'-0" = 50'-5"	38 Spa. at 1'-0" = 38'-0"	28 Spa. at 10" = 23'-4"
5	52 Spa. at 1'-0" = 51'-0"	40 Spa. at 1'-0" = 39'-8"	30 Spa. at 10" = 24'-6"
6	52 Spa. at 1'-0" = 51'-6"	42 Spa. at 1'-0" = 41'-4"	31 Spa. at 10" = 25'-7"
7	53 Spa. at 1'-0" = 52'-1"	43 Spa. at 1'-0" = 43'-0"	33 Spa. at 10" = 26'-9"
8	53 Spa. at 1'-0" = 52'-8"	45 Spa. at 1'-0" = 44'-9"	34 Spa. at 10" = 27'-10"
9	54 Spa. at 1'-0" = 53'-3"	47 Spa. at 1'-0" = 46'-5"	35 Spa. at 10" = 29'-0"
10	54 Spa. at 1'-0" = 53'-9"	49 Spa. at 1'-0" = 48'-1"	37 Spa. at 10" = 30'-1"
11	55 Spa. at 1'-0" = 54'-4"	50 Spa. at 1'-0" = 49'-9"	38 Spa. at 10" = 31'-2"
12	55 Spa. at 1'-0" = 54'-11"	52 Spa. at 1'-0" = 51'-5"	39 Spa. at 10" = 32'-4"
13	56 Spa. at 1'-0" = 55'-6"	54 Spa. at 1'-0" = 53'-2"	41 Spa. at 10" = 33'-5"
14	57 Spa. at 1'-0" = 56'-0"	55 Spa. at 1'-0" = 54'-10"	42 Spa. at 10" = 34'-7"
15	57 Spa. at 1'-0" = 56'-7"	57 Spa. at 1'-0" = 56'-5"	43 Spa. at 10" = 35'-8"

Notes:
Work this sheet with Sheet S2-43 of S2-81.
For Section A-A, see Sheet S2-43 of S2-81.



SECTION AT PIER

SECTION AT ABUTMENT

* Use 1/4" Weld for S. Abut. and Piers 2 through 4.
** Use 5/16" Weld for N. Abut.

4/3/17 PM 0161716-60W26-S044-FramePlan-2.dgn



USER NAME = rlschultz	DESIGNED - WJC	REVISED
PLOT SCALE = 10:8.0012 ' / in.	CHECKED - DL	REVISED
PLOT DATE = 9/15/2013	DRAWN - RLS	REVISED
	CHECKED - DL	REVISED

STATE OF ILLINOIS
DEPARTMENT OF TRANSPORTATION

FRAMING PLAN 2
STRUCTURE NO. 016-1716

SHEET NO. S2-44 OF S2-81 SHEETS

F.A.U. RTE. 3730	SECTION 2013-008R	COUNTY COOK	TOTAL SHEETS 559	SHEET NO. 404
CONTRACT NO. 60W26			ILLINOIS FED. AID PROJECT	