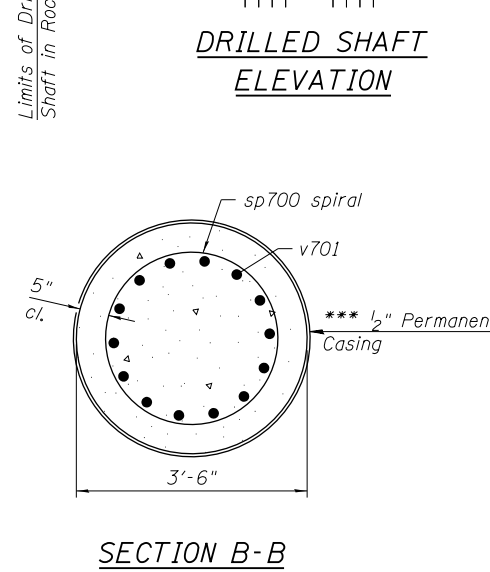


Note:  
Utility sleeve installed in this Contract. Conduit provided by Others. Contractor to coordinate with utility owner for location and size of the utility sleeves. Cost of utility sleeves included in Concrete Structures.

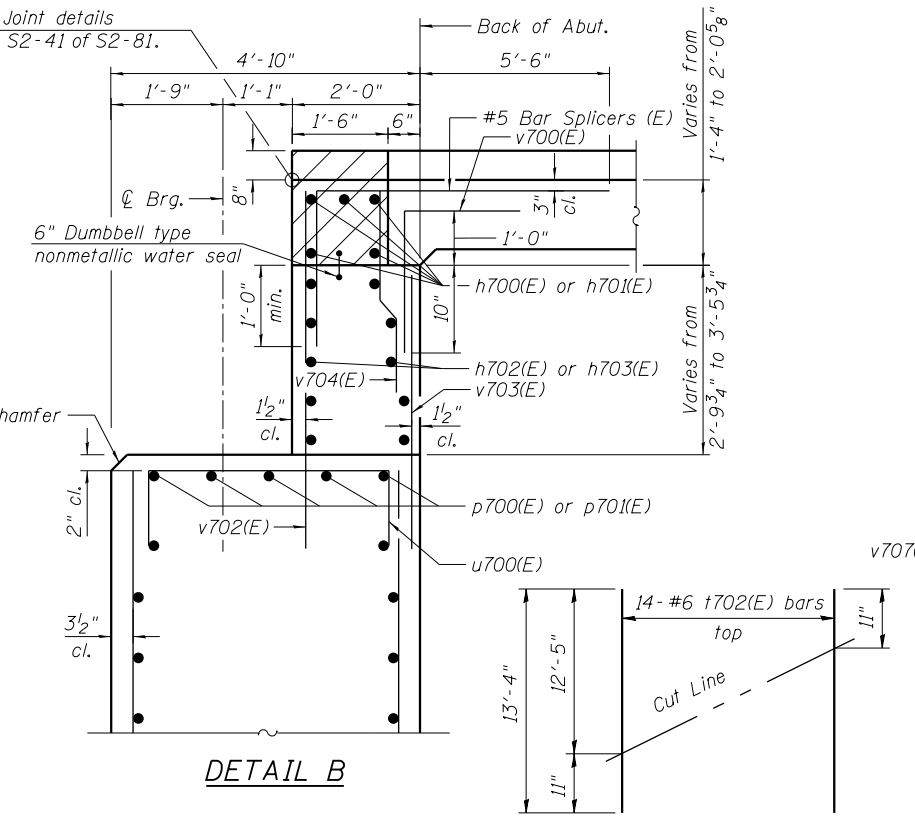
**BILL OF MATERIAL**

Bar	No.	Size	Length	Shape
b700(E)	26	#5	1'-6"	—
c700(E)	6	#5	16'-2"	┌
h700(E)	5	#6	46'-10"	—
h701(E)	5	#6	43'-7"	—
h702(E)	8	#5	46'-10"	—
h703(E)	8	#5	43'-7"	—
h704(E)	4	#5	3'-3"	—
h705(E)	4	#5	7'-0"	┌
h706(E)	24	#5	9'-3"	—
h707(E)	16	#5	4'-0"	—
h708(E)	8	#5	2'-10"	—
n700(E)	93	#5	7'-11"	┌
n701(E)	158	#6	8'-8"	┌
n702(E)	224	#9	13'-4"	┌
p700(E)	6	#6	46'-10"	—
p701(E)	6	#6	43'-7"	—
p702(E)	38	#5	46'-10"	—
p703(E)	38	#5	43'-7"	—
p704(E)	4	#6	36'-1"	—
sp700	16	#4	81'-1"	—
t700(E)	256	#7	13'-2"	—
t701(E)	8	#7	15'-9"	—
t702(E)	56	#7	13'-4"	—
u700(E)	93	#6	6'-6"	┌
u701(E)	37	#6	4'-6"	┌
u702(E)	4	#6	7'-5"	┌
v700(E)	93	#5	3'-9"	┌
v701	448	#9	44'-10"	—
v702(E)	93	#5	5'-9"	—
v703(E)	93	#5	4'-1"	—
v704(E)	93	#5	3'-8"	—
v705(E)	82	#6	17'-11"	—
v706(E)	76	#6	17'-8"	—
v707(E)	48	#5	17'-11"	—
v708(E)	45	#5	17'-8"	—
v709(E)	4	#5	5'-0"	—
v710(E)	6	#5	5'-2"	—
v711(E)	24	#5	2'-6"	—
w700(E)	30	#5	46'-10"	—
w701(E)	30	#5	43'-7"	—



Minimum Bar Laps

Bar	Lap
#4	2'-7"
#5	3'-3"
#6	3'-10"
#9	8'-7"



Notes:

Apply Concrete Sealer to all exposed concrete surfaces of the abutment. Pour steps monolithically with cap.

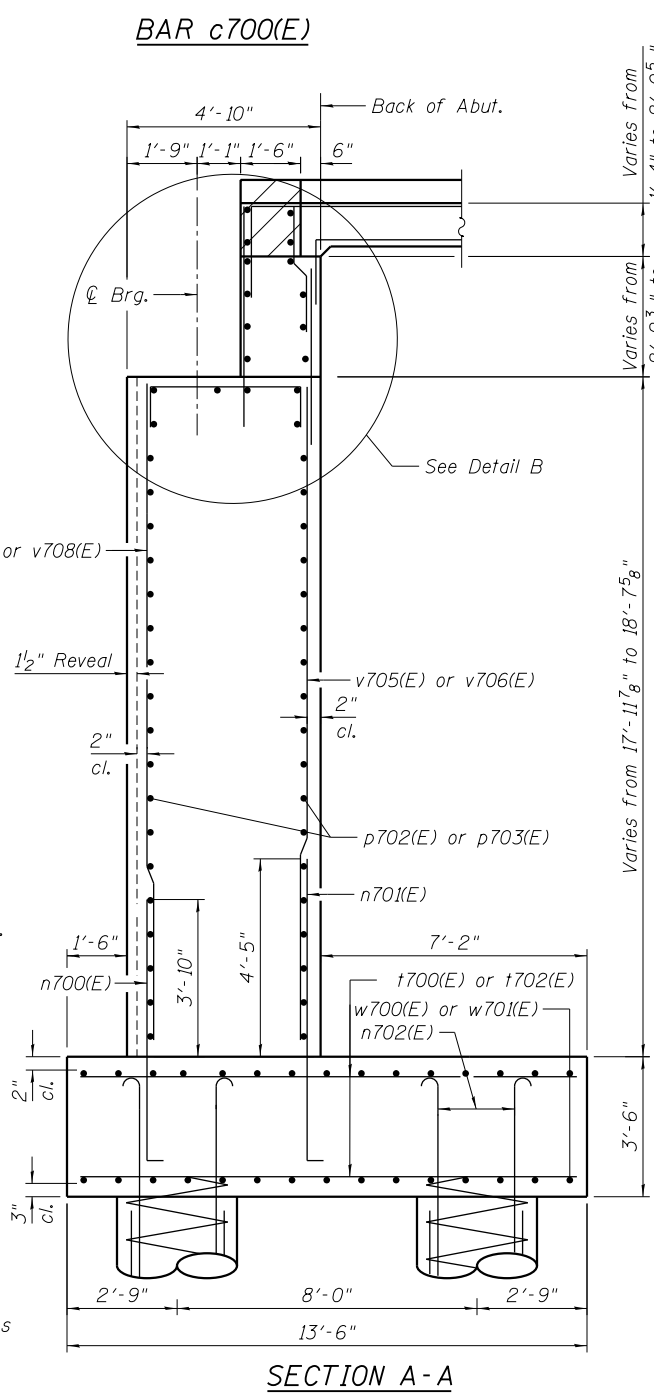
Hatched area to be poured after superstructure false work has been removed. Quantity of concrete included with Concrete Superstructure.

Space u700(E), p700(E) and p701(E) bars to miss anchor bolts.

\* The quantities and detailing are based on the estimated elevations shown on the plans. The actual elevations may differ at each shaft and corresponding adjustments shall be made to the drilled shaft and reinforcement quantities and payment limits.

\*\*\* Contractor may need to increase the casing thickness to withstand the installation process. The Estimated Top of Rock/Bottom of Permanent Casing Elevation is shown. The limits of the casing shall be adjusted as necessary, and as approved, such that the actual installed casing length extends to the as-encountered top of rock at each shaft. See Article 516.06(d) of the Standard Specifications.

When Contractor's means and methods include initiating drilling for shafts at elevations higher than the final top of shaft elevation (e.g. Existing Ground Elevation), the costs for drilling, disposing of excavation, providing casing and backfilling of drilled shafts or other appurtenant work activities in the areas between the elevation where drilling is initiated and the proposed elevation of the top of shaft shall not be paid for separately but shall be included in the cost of Drilled Shaft in Soil.



4:33:41 PM 0161716-60W26-S056-Abutment-NorthernDetails.dgn



USER NAME = rlschultz	DESIGNED - JRM	REVISED
PLOT SCALE = 0:1.0000 ' / in.	CHECKED - SAS	REVISED
PLOT DATE = 9/15/2013	DRAWN - RLS	REVISED
	CHECKED - MDS	REVISED

STATE OF ILLINOIS  
DEPARTMENT OF TRANSPORTATION

NORTH ABUTMENT DETAILS 1  
STRUCTURE NO. 016-1716

SHEET NO. S2-56 OF S2-81 SHEETS

F.A.U. RT.E.	SECTION	COUNTY	TOTAL SHEETS	SHEET NO.
3730	2013-008R	COOK	559	416
CONTRACT NO.			60W26	
ILLINOIS FED. AID PROJECT				