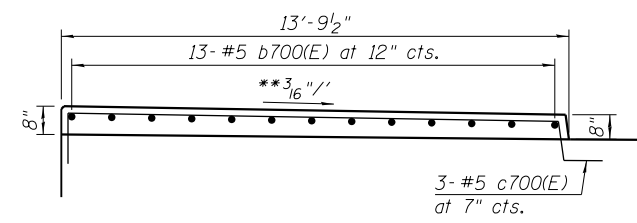
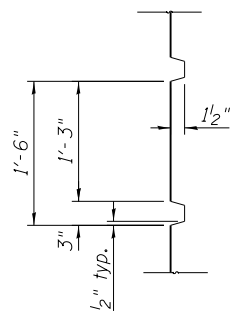


** Perpendicular to Halsted Street



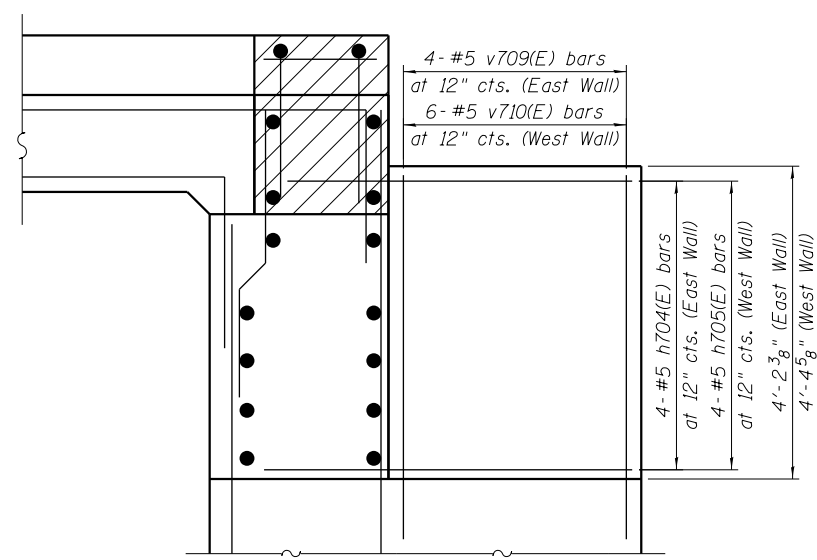
SIDEWALK DETAIL
(West sidewalk shown,
East sidewalk similar, opp. hand)



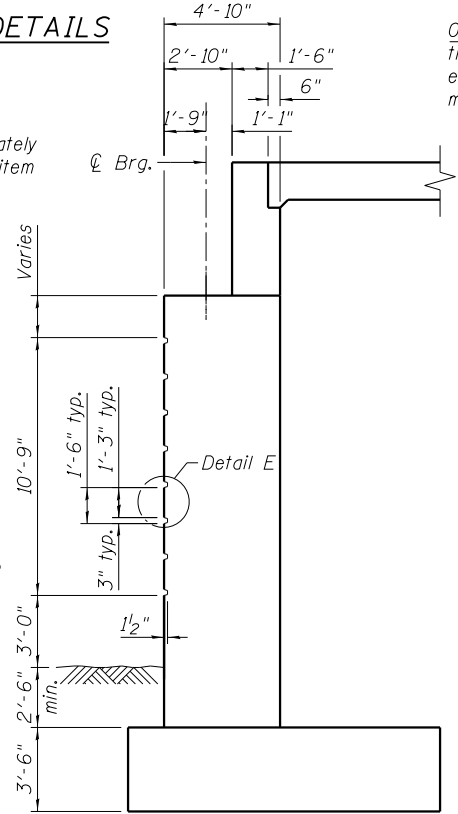
DETAIL E
(Typical Reveal Detail)

NORTH ABUTMENT ELEVATION - ARCHITECTURAL DETAILS
(Looking North)

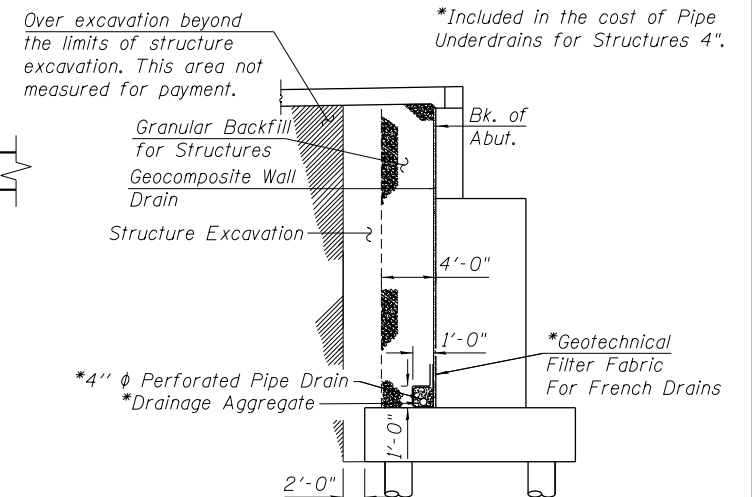
Note:
The 3" x 1/2" reveal will not be paid separately and shall be included in the cost of the pay item "Concrete Structures".



SECTION B-B



SECTION C-C



SECTION THRU ABUTMENT

All drainage system components shall extend to the end of each Soil Retention System. An outlet pipe shall extend underneath the Northwest Soil Retention System to drain into proposed drainage structure S-36.

BILL OF MATERIAL

Item	Unit	Total
Pipe Underdrains For Structures 4"	Foot	174

4:42:17 PM 0161716-60W26-S057-Abutment-NorthDetails2.dgn



USER NAME = rlschultz	DESIGNED - JRM	REVISED
PLOT SCALE = 0:1.0000 ' / in.	CHECKED - MDS	REVISED
PLOT DATE = 9/15/2013	DRAWN - RLS	REVISED
	CHECKED - MDS	REVISED

STATE OF ILLINOIS
DEPARTMENT OF TRANSPORTATION

NORTH ABUTMENT DETAILS 2
STRUCTURE NO. 016-1716

SHEET NO. S2-57 OF S2-81 SHEETS

F.A.U. RTE. 3730	SECTION 2013-008R	COUNTY COOK	TOTAL SHEETS 559	SHEET NO. 417
CONTRACT NO. 60W26			ILLINOIS FED. AID PROJECT	