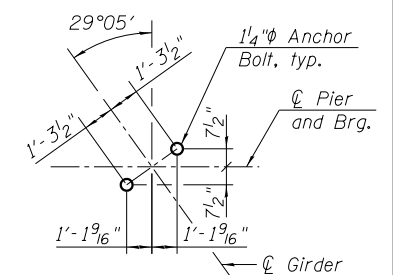
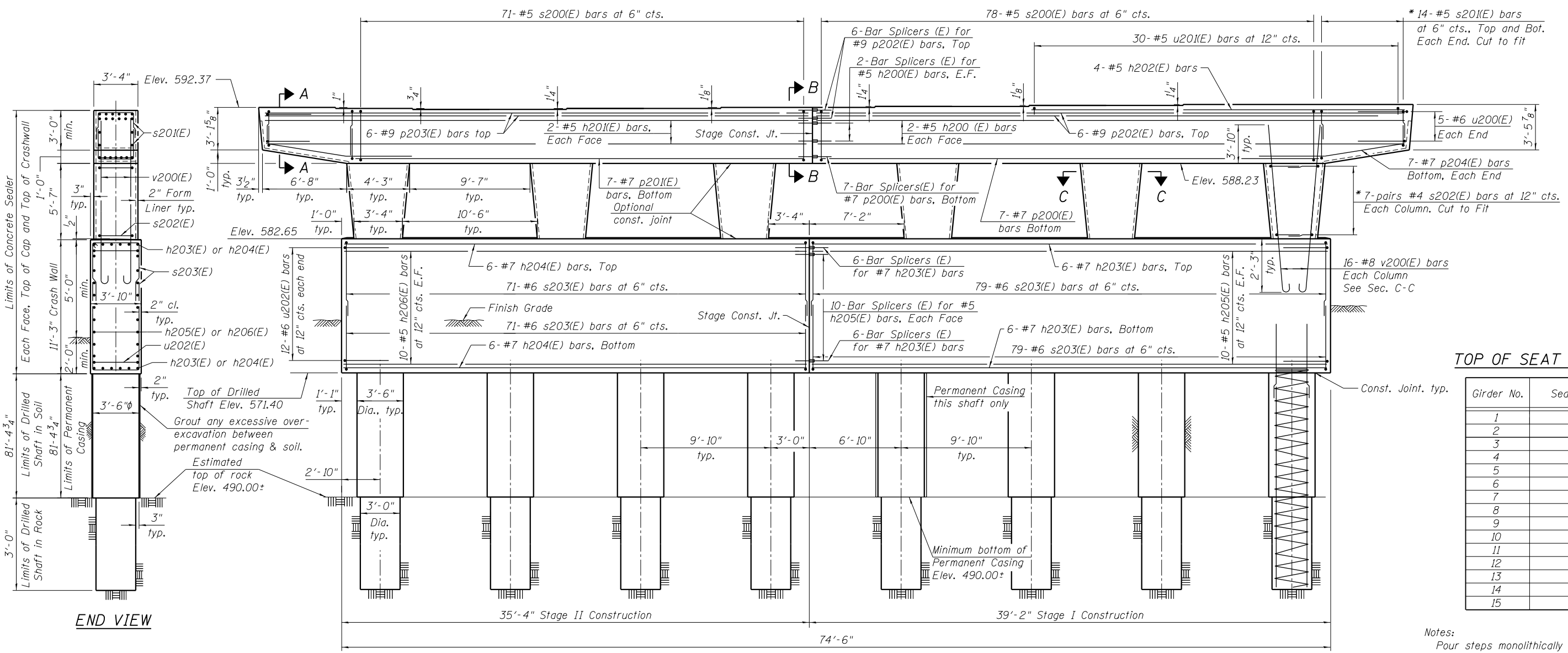


TOP PLAN



ANCHOR BOLT LAYOUT

\*Cut vertical legs of bar to fit.



ELEVATION  
(Looking North)

TOP OF SEAT ELEVATION

Girder No.	Seat Elevation
1	592.37
2	592.29
3	592.23
4	592.23
5	592.34
6	592.34
7	592.43
8	592.43
9	592.53
10	592.53
11	592.62
12	592.62
13	592.72
14	592.72
15	592.72

Notes:  
 Pour steps monolithically with cap.  
 Space reinforcement in cap to miss anchor bolts.  
 For Sections A-A, B-B and C-C, see sheet S2-59 of S2-81.

5/16/04 PM 0161716-60W26-S057-Pier-1-P&E.dgn



USER NAME = jlvuorenmaa	DESIGNED - JRM	REVISED
CHECKED - MDS	REVISIONS	
PLOT SCALE = 4:0.0005 ' = 1/16" IN.	DRAWN - RLS	REVISIONS
PLOT DATE = 8/18/2013	CHECKED - JRM	REVISIONS

STATE OF ILLINOIS  
DEPARTMENT OF TRANSPORTATION

PIER 1 PLAN AND ELEVATION  
STRUCTURE NO. 016-1716

SHEET NO. S2-58 OF S2-81 SHEETS

F.A.U. RT.E.	SECTION	COUNTY	TOTAL SHEETS	SHEET NO.
3730	2013-008R	COOK	559	418
CONTRACT NO.			60W26	
ILLINOIS FED. AID PROJECT				