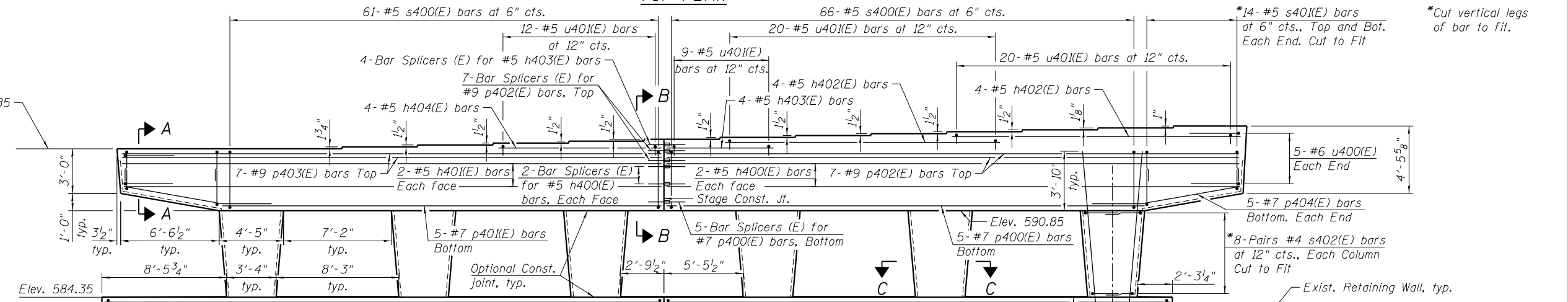
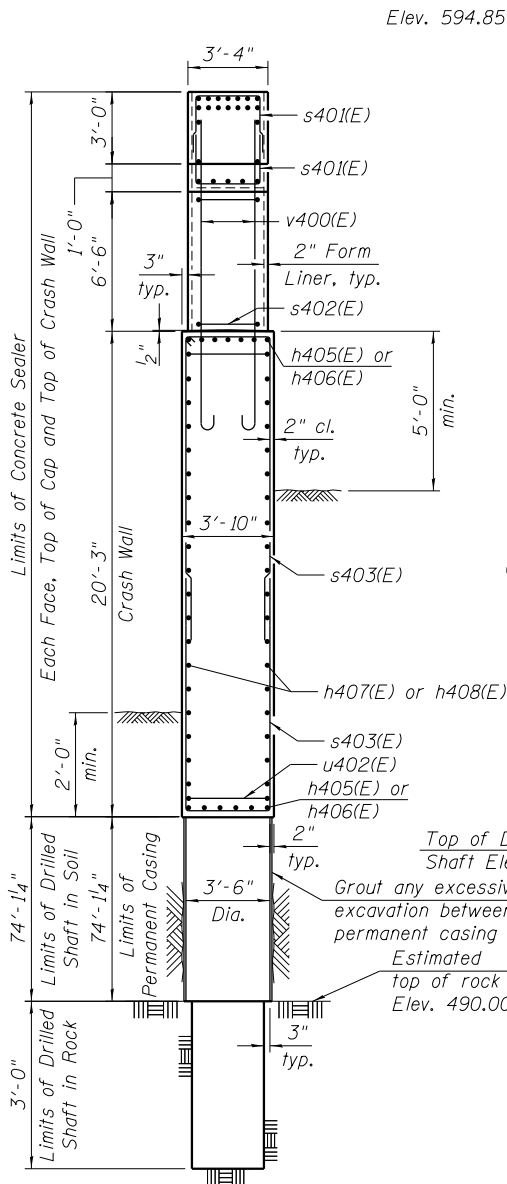


TOP PLAN



ELEVATION
(Looking North)



END VIEW
(Looking East)

TOP OF SEAT ELEVATION

Girder No.	Seat Elevation
1	594.85
2	594.85
3	594.85
4	595.00
5	595.13
6	595.26
7	595.38
8	595.51
9	595.64
10	595.77
11	595.89
12	596.02
13	596.15
14	596.24
15	596.32

Notes:
 Four steps monolithically with cap.
 Space reinforcement in cap to miss anchor bolts.
 For Sections A-A, B-B and C-C, see sheet S2-65 of S2-81.
 Backfill shall be placed behind the pier after the superstructure has been poured and false work removed. See Article 502.10 of the Standard Specifications.

4:33:54 PM 0161716-60W26-S064-Pier3-P&E.dgn



USER NAME = rlschultz	DESIGNED - JRM	REVISED
PLOT SCALE = 4:0.0005 ' / in.	CHECKED - MDS	REVISED
PLOT DATE = 9/15/2013	DRAWN - RLS	REVISED
	CHECKED - JRM	REVISED

STATE OF ILLINOIS
DEPARTMENT OF TRANSPORTATION

PIER 3 PLAN AND ELEVATION
STRUCTURE NO. 016-1716

SHEET NO. S2-64 OF S2-81 SHEETS

F.A.U. R.E.	SECTION	COUNTY	TOTAL SHEETS	SHEET NO.
3730	2013-008R	COOK	559	424
CONTRACT NO.			60W26	
ILLINOIS FED. AID PROJECT				