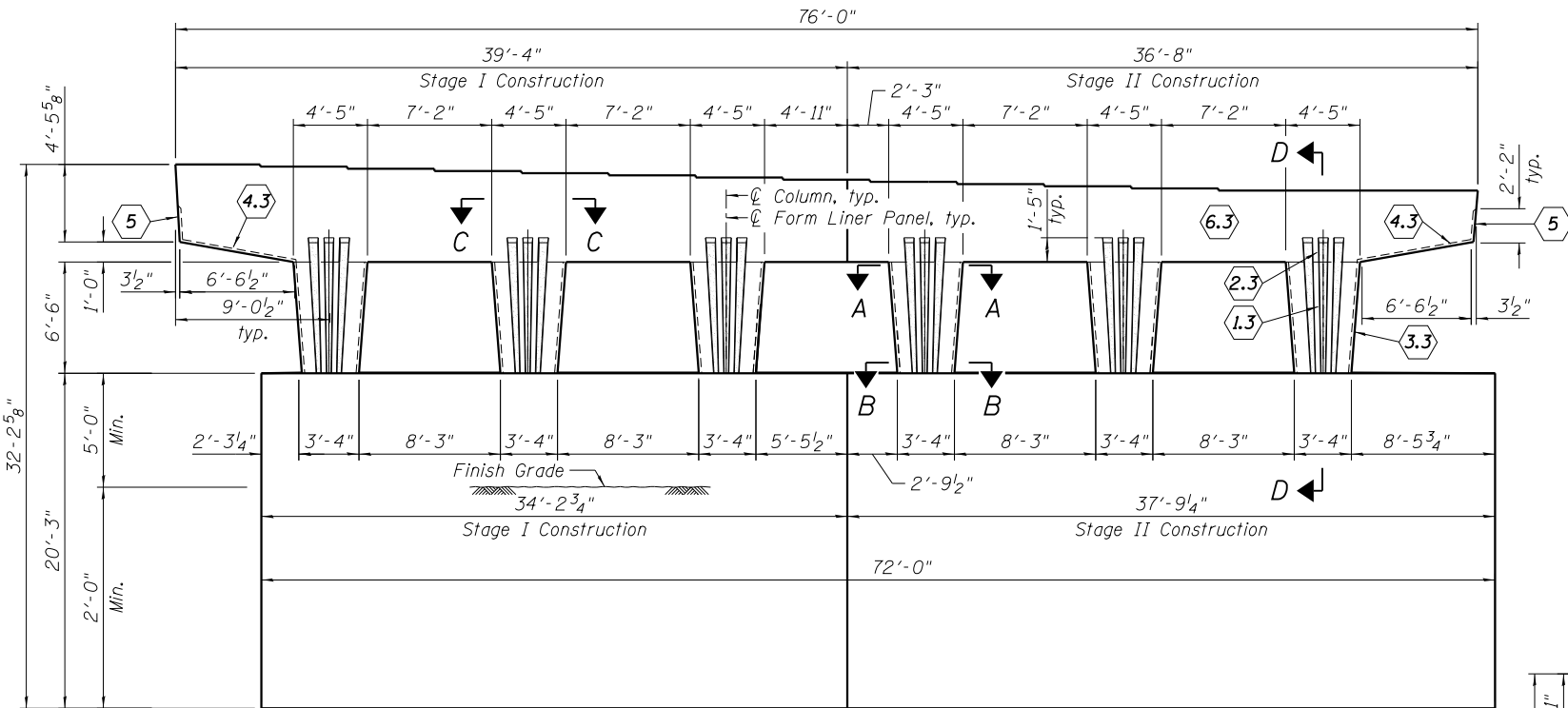
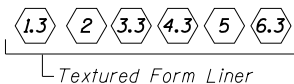


PIER ELEVATION
(Looking North)



PIER ELEVATION
(Looking South)

LEGEND



BILL OF MATERIAL

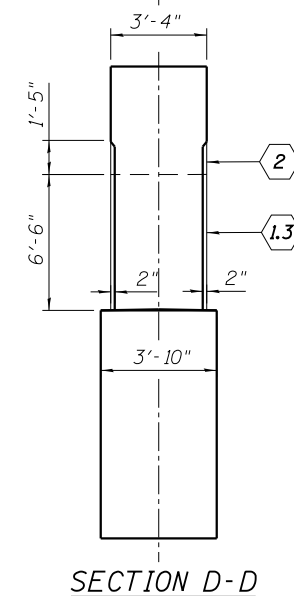
Item	Unit	Total
Form Liner Textured Surface	Sq. Ft.	688

Notes:

- Alternate: For surface indicated as Textured Form Liner (6.3), Contractor can chose to build large protrusion directly into these forms if a smooth uniform surface can be provided.
- Tapered fluting - dimensions vary, see elevation profile.
- Form liner panel (2) is continuation of panel (1.3). Keep adjacent form liners aligned.
- Hand clean and smooth the surface of the construction joint between the pier and cap.
- Texture 1: Light Sandblast as selected from manufacturer's standard pattern selection.
Texture 2: Smooth

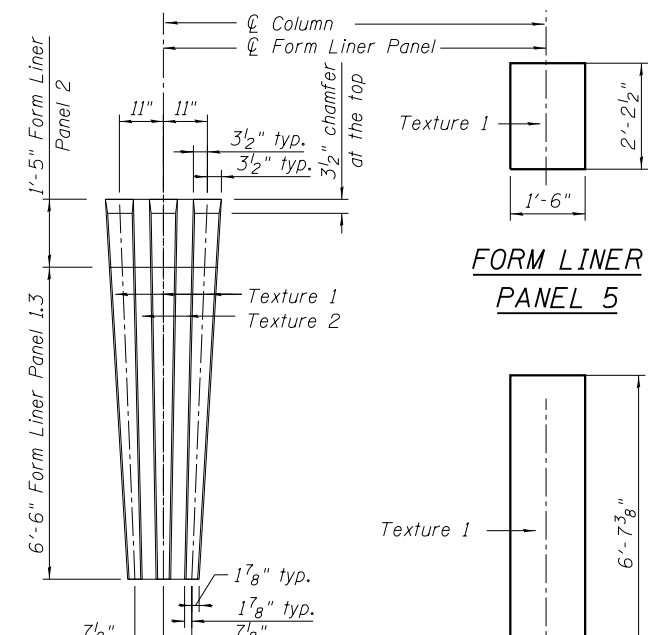
PIER END VIEW

(Looking East)
(Looking West - Sim.)

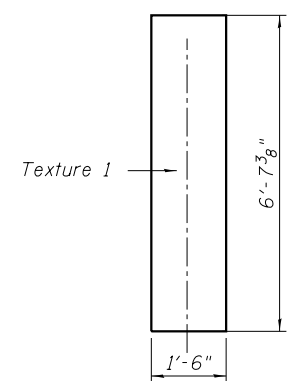


SECTION D-D

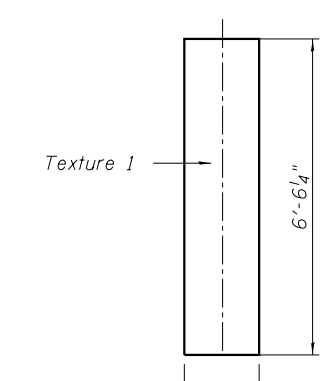
FORM LINER PANEL 1.3 & 2



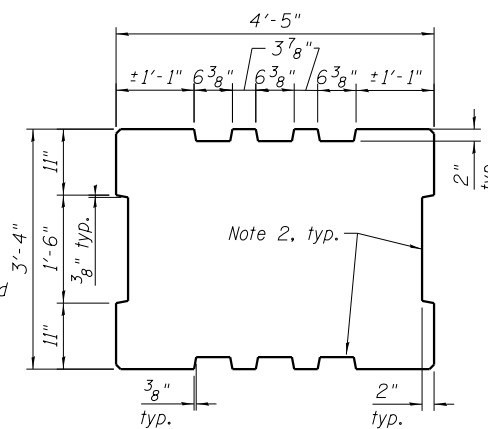
FORM LINER PANEL 5



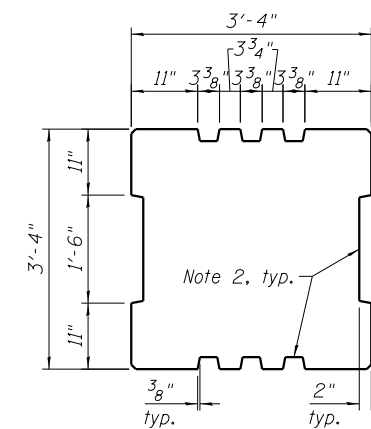
FORM LINER PANEL 4.3



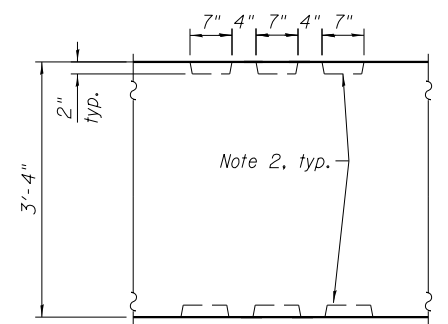
FORM LINER PANEL 3.3



SECTION A-A
At Top of Column



SECTION B-B
At Bottom of Column



SECTION C-C
In Cap

4/3/15 5:56 PM 0161716-60W26-S066-Pier_Arch_Details.dgn



USER NAME = rlschultz	DESIGNED - MDS	REVISED
CHECKED - JRM	REVISIONS	
PLOT SCALE = 5:4.0006 ' / in.	DRAWN - RLS	REVISIONS
PLOT DATE = 9/15/2013	CHECKED - MDS	REVISIONS

STATE OF ILLINOIS
DEPARTMENT OF TRANSPORTATION

PIER 3 ARCHITECTURAL DETAILS
STRUCTURE NO. 016-1716

SHEET NO. S2-66 OF S2-81 SHEETS

F.A.U. RE.	SECTION	COUNTY	TOTAL SHEETS	SHEET NO.
3730	2013-008R	COOK	559	426
CONTRACT NO.			60W26	
ILLINOIS FED. AID PROJECT				