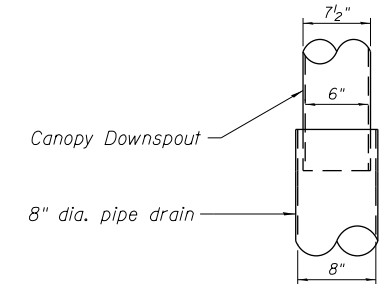
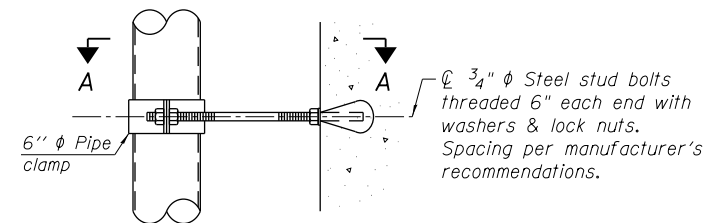


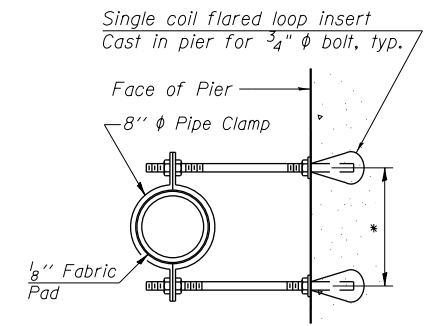
**ELEVATION**  
Looking West



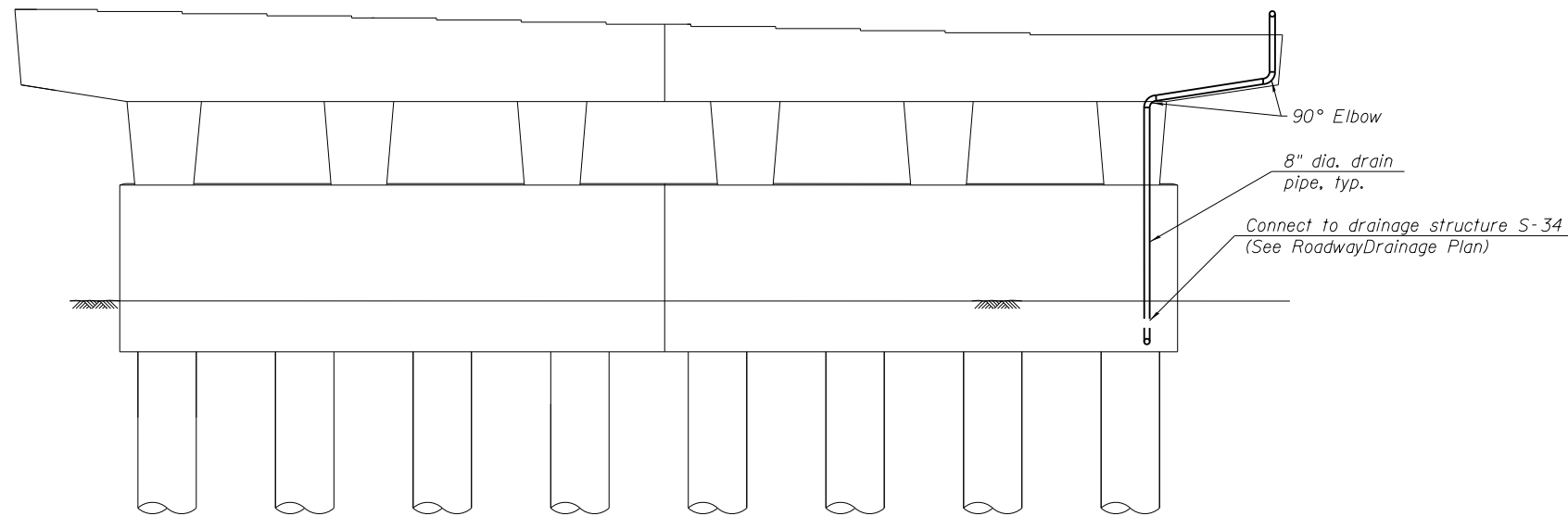
**DETAIL 1**



**PIPE BRACKET DETAIL**



**SECTION A-A**  
\* Dimension as required by Pipe Clamp



**PIER 2 FRONT ELEVATION**  
Looking North

**Notes:**

Provide structural support from proposed deck slab for drain pipe per manufacturer's recommendation, not to exceed 6' cts. Cost included with "Plumbing - Downspouts (CTA)," All pipes, pipe fittings and brackets needed shall be included with cost of "Plumbing - Downspouts (CTA)". See Sheet Architectural drawings for Canopy Roof Plan and Cross Sections.

**BILL OF MATERIAL**

Item	Unit	Total
Plumbing - Downspouts (CTA)	L. Sum	1

60W26-265.dgn



USER NAME = BAWtor+	DESIGNED - KAH	REVISED
	CHECKED - JRM	REVISED
PLOT SCALE = 10:8.0012 ' / in.	DRAWN - RLS	REVISED
PLOT DATE = 9/15/2013	CHECKED - KAH	REVISED

**STATE OF ILLINOIS**  
**DEPARTMENT OF TRANSPORTATION**

**PEDESTRIAN CANOPY DRAINAGE PLAN**  
**STRUCTURE NO. 016-1716**

SHEET NO. 9 OF 11 SHEETS

F.A.U. RTE.	SECTION	COUNTY	TOTAL SHEETS	SHEET NO.
3730	2013-008R	COOK	559	450
CONTRACT NO.			60W26	
ILLINOIS FED. AID PROJECT				