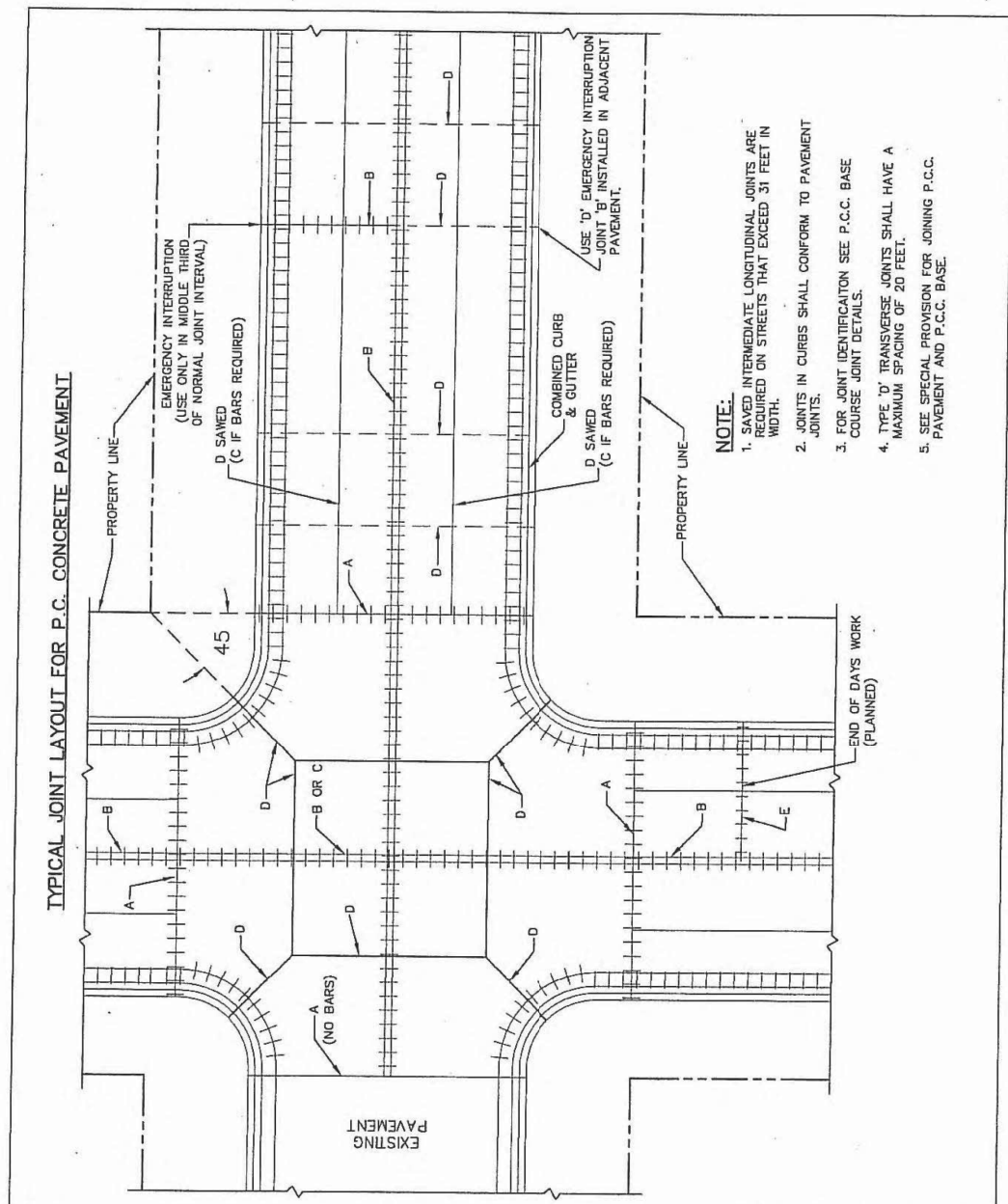


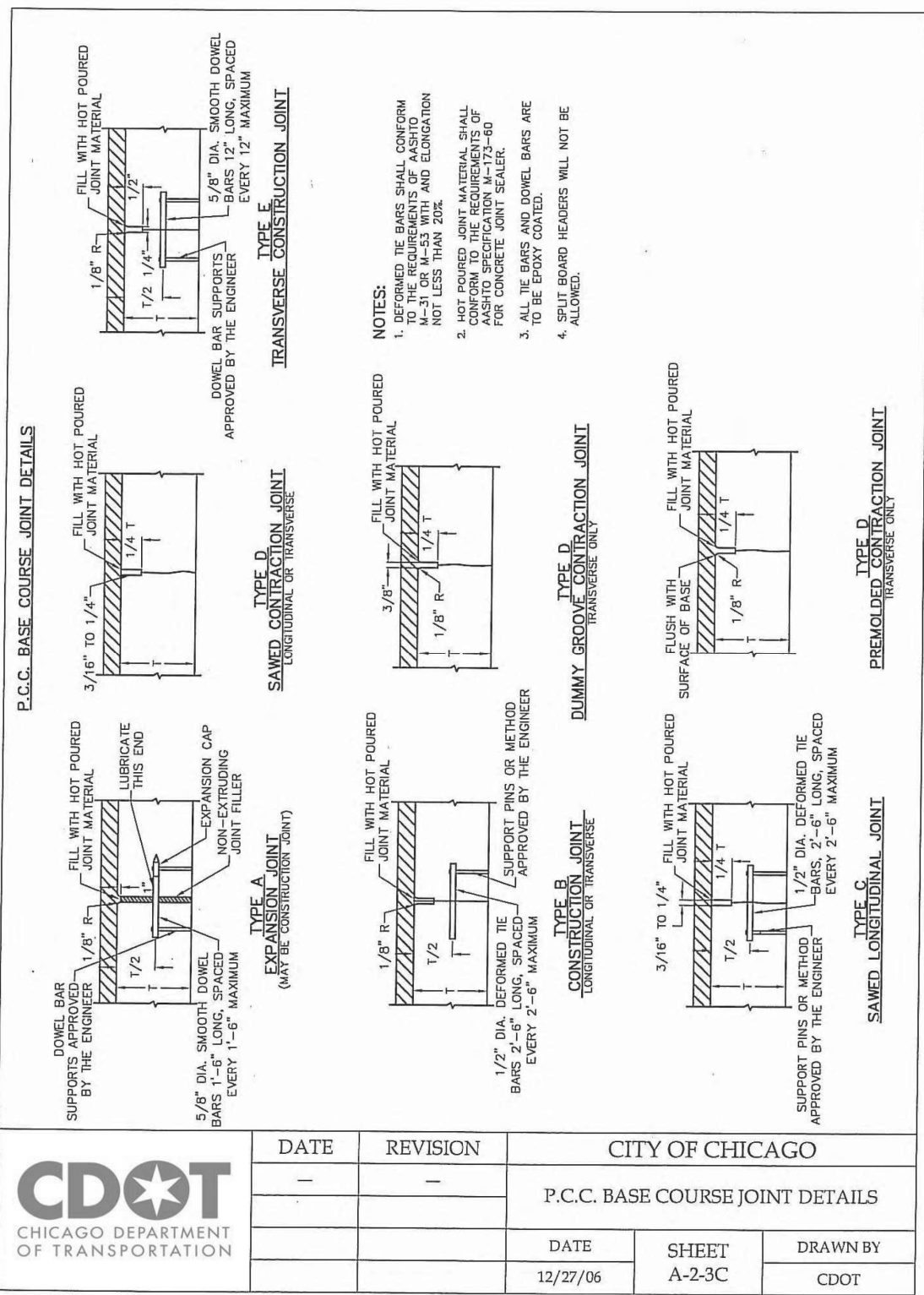
FILE PATH = c:\pwworking\lucase\work\06204535\0160W26-Sht-CDOT-DETAIL-02.dgn



- NOTE:**
1. SAWED INTERMEDIATE LONGITUDINAL JOINTS ARE REQUIRED ON STREETS THAT EXCEED 31 FEET IN WIDTH.
  2. JOINTS IN CURBS SHALL CONFORM TO PAVEMENT COURSE JOINT DETAILS.
  3. FOR JOINT IDENTIFICATION SEE P.C.C. BASE COURSE JOINT DETAILS.
  4. TYPE 'D' TRANSVERSE JOINTS SHALL HAVE A MAXIMUM SPACING OF 20 FEET.
  5. SEE SPECIAL PROVISION FOR JOINING P.C.C. PAVEMENT AND P.C.C. BASE.



DATE		REVISION		CITY OF CHICAGO	
-		-		TYPICAL JOINT LAYOUT FOR P.C. CONCRETE PAVEMENTS	
DATE	SHEET	DRAWN BY			
12/26/06	A-2-3A	CDOT			



- NOTES:**
1. DEFORMED TIE BARS SHALL CONFORM TO THE REQUIREMENTS OF AASHTO M-31 OR M-53 WITH AN ELONGATION NOT LESS THAN 20%.
  2. HOT Poured JOINT MATERIAL SHALL CONFORM TO THE REQUIREMENTS OF AASHTO SPECIFICATION M-173-80 FOR CONCRETE JOINT SEALER.
  3. ALL TIE BARS AND DOWEL BARS ARE TO BE EPOXY COATED.
  4. SPLIT BOARD HEADERS WILL NOT BE ALLOWED.



DATE		REVISION		CITY OF CHICAGO	
-		-		P.C.C. BASE COURSE JOINT DETAILS	
DATE	SHEET	DRAWN BY			
12/27/06	A-2-3C	CDOT			

STATE OF ILLINOIS  
DEPARTMENT OF TRANSPORTATION

CHICAGO DEPARTMENT OF TRANSPORTATION  
STANDARDS

SCALE: N.T.S. SHEET 2 OF 6 SHEETS STA. TO STA.

F.A.I. RTE.	SECTION	COUNTY	TOTAL SHEETS	SHEET NO.
90/94/290	2013-008R	COOK	559	504
CONTRACT NO. 60W26				
ILLINOIS FED. AID PROJECT				