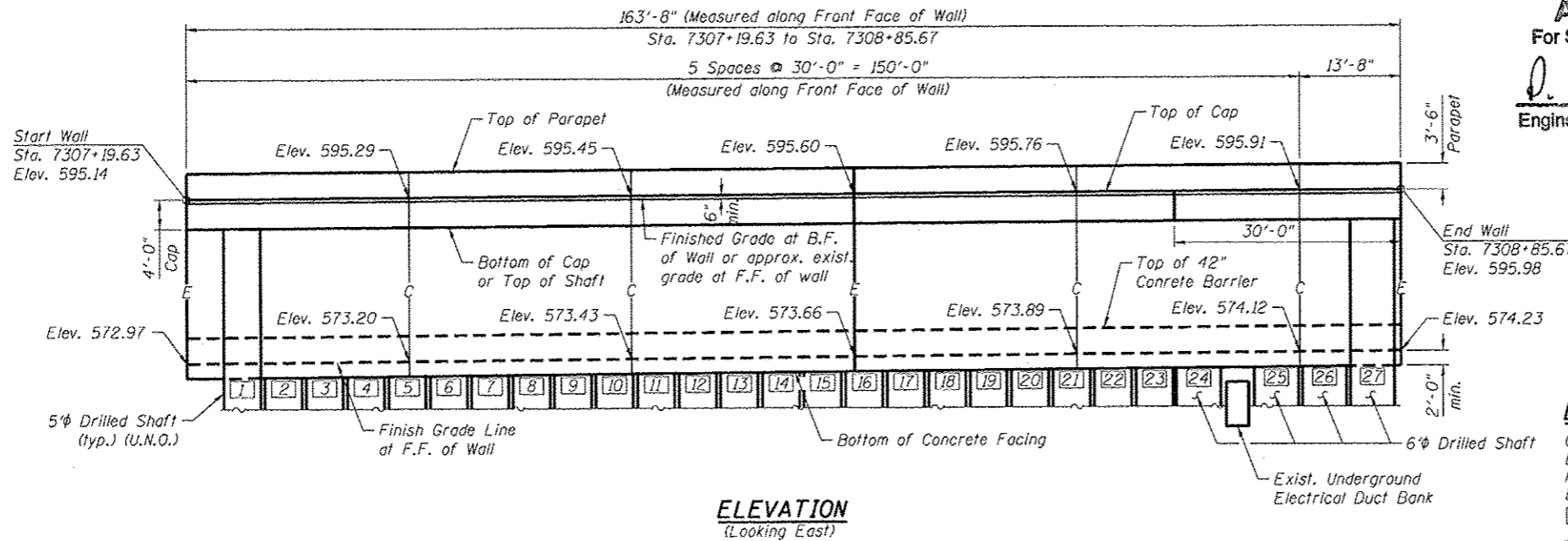


Bench Mark: Cut square on southwest parapet wall over I-90 on west end, +2.5 A/G. Elevation 598.65.

Existing Structure: None.



**ELEVATION**  
(Looking East)

**APPROVED**  
For Structural Adequacy Only

*P. Carl Pender*  
Engineer of Bridges & Structures



*Amish T. Bhatt 8/20/13*  
AMISH T. BHATT  
LICENSE EXPIRES 11/30/2014

**LEGEND:**

- C = Construction Joint
- E = Expansion Joint
- F.F. = Front Face
- B.F. = Back Face
- [ ] = Drilled Shaft Number
- ⊕ = Soil Boring Locations
- e— = Exist. Underground Electric
- W— = Exist. Underground Water

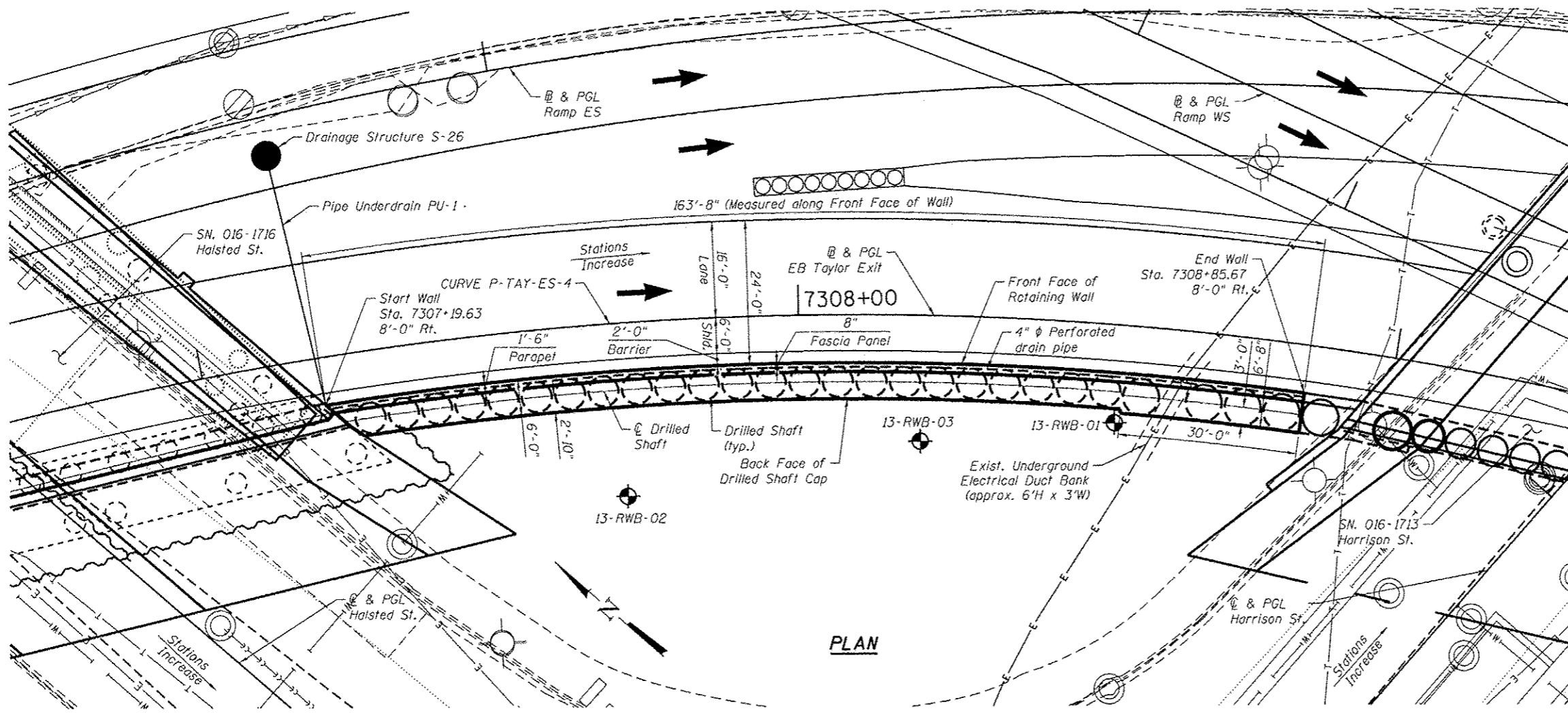
**DESIGN SPECIFICATIONS**  
2012 AASHTO LRFD Bridge Design Specifications,  
6th Edition with 2013 Interim Revisions

**DESIGN STRESSES**

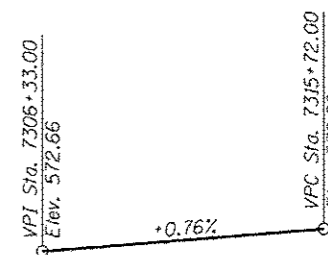
FIELD UNITS  
f'c = 3,500 psi  
f'c = 7,000 psi (Drilled Shaft - see Gen. Note 7)  
fy = 60,000 psi (Reinforcement)

**CURVE DATA**

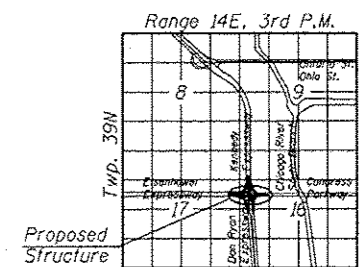
(EB Taylor Exit)  
Prop. Curve P-TAY-ES-4  
P.I. Sta. = 7309+22.03  
Δ = 43° 22' 59" (RT)  
D = 10° 13' 53"  
R = 560.00'  
T = 222.76'  
L = 424.02'  
E = 42.68'  
e = 5.8%  
T.R. = NA'  
S.E. Run = 150'  
P.C. Sta. = 7306+99.28  
P.T. Sta. = 7311+23.30



**PLAN**



**PROFILE GRADE**  
(along EB Taylor Exit)



**LOCATION SKETCH**

**GENERAL PLAN & ELEVATION**  
F.A.I. RTE. SB 90/94  
(DAN RYAN EXPRESSWAY)  
F.A.I. RTE. 90/94 - SECTION 2013-008R  
COOK COUNTY  
STATION 7307+19.63 TO STATION 7308+85.67  
STRUCTURE NO. 016-1802



USER NAME: dunkerlayb	DESIGNED: OD	REVISED:
PLLOT SCALE: N.T.S.	CHECKED: ATB	REVISED:
PLLOT DATE: 8/21/2013	DRAWN: BRO	REVISED:
	CHECKED: ATB	REVISED:

STATE OF ILLINOIS  
DEPARTMENT OF TRANSPORTATION

GENERAL PLAN AND ELEVATION  
STRUCTURE NO. 016-1802

SHEET NO. RW-01 OF RW-08 SHEETS

F.A.I. RTE. 90/94/290	SECTION 2013-008R	COUNTY COOK	TOTAL SHEETS 559	SHEET NO. 453
CONTRACT NO. 60W26				ILLINOIS FED. AID PROJECT

0161802-60W26-S01-CPE