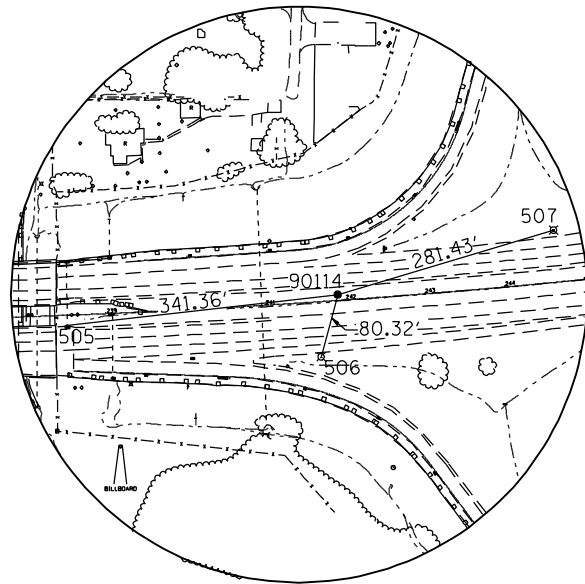
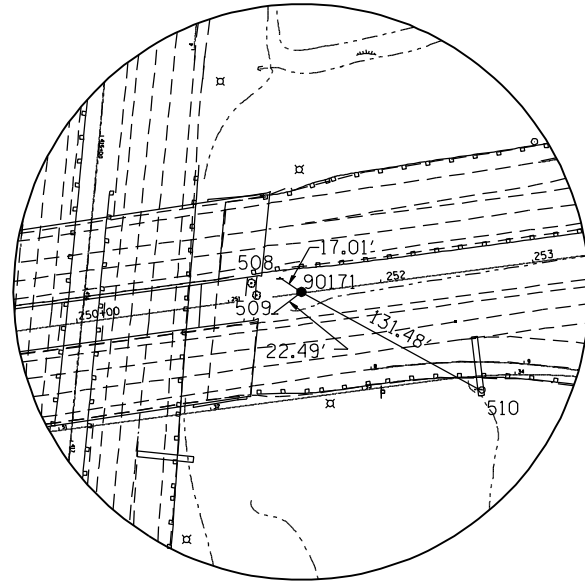


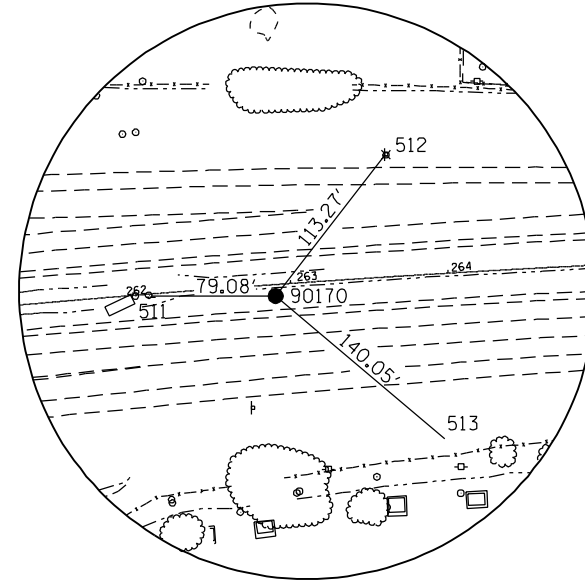
# EXISTING HORIZONTAL & VERTICAL CONTROL



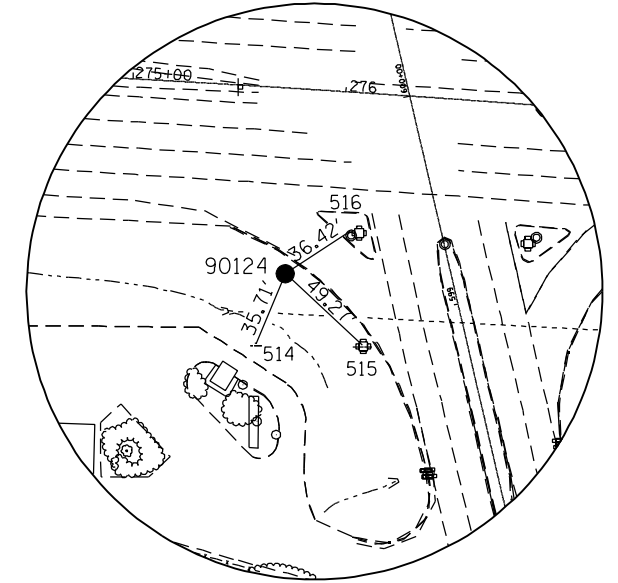
HORIZONTAL CONTROL POINT NO. 90114



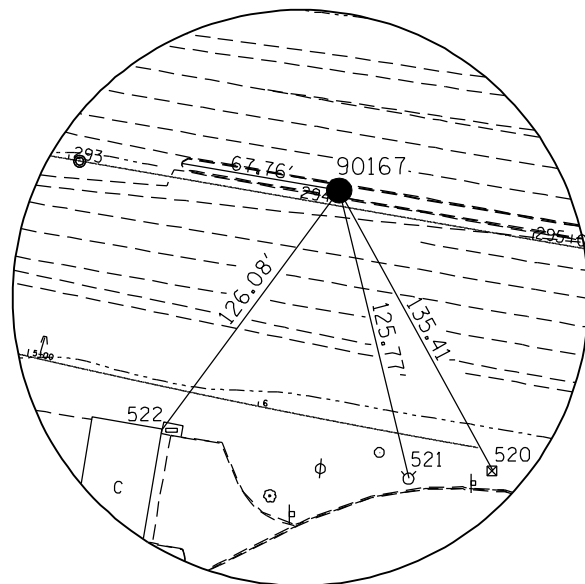
HORIZONTAL CONTROL POINT NO. 60171



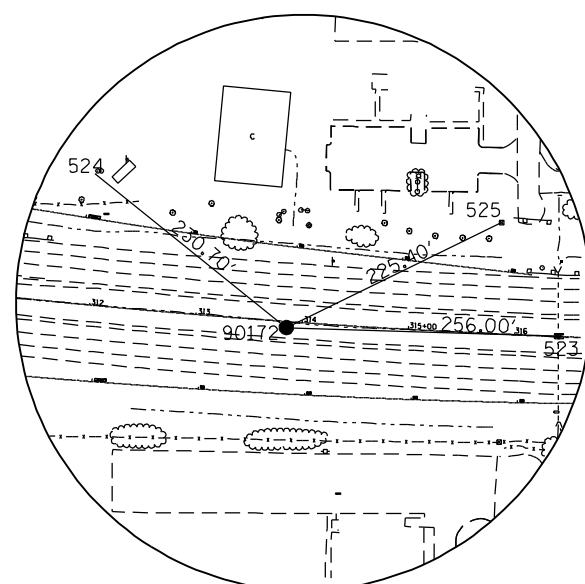
HORIZONTAL CONTROL POINT NO. 60170



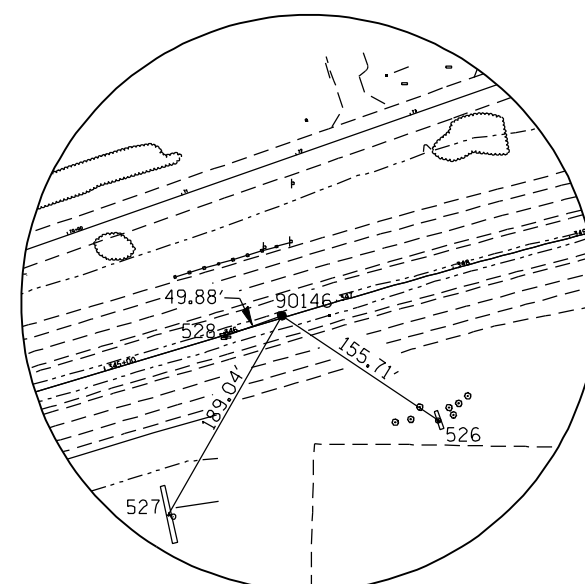
HORIZONTAL CONTROL POINT NO. 60124



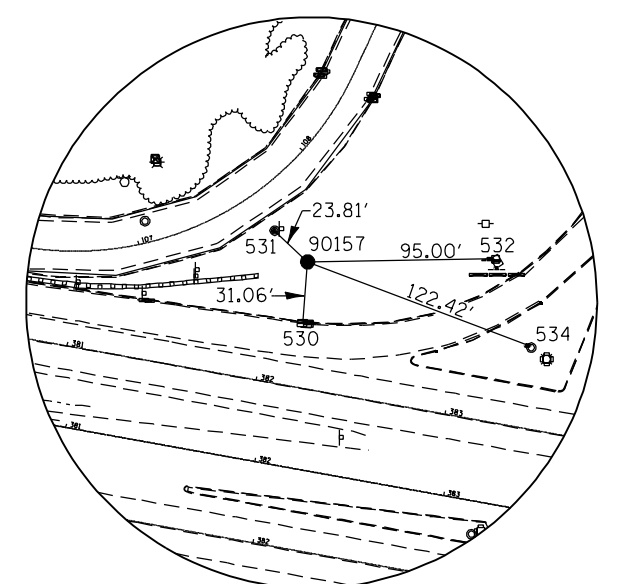
HORIZONTAL CONTROL POINT NO. 60167



HORIZONTAL CONTROL POINT NO. 60172



HORIZONTAL CONTROL POINT NO. 60146



HORIZONTAL CONTROL POINT NO. 60157

FILE NAME =	USER NAME = espino	DESIGNED -	REVISED -	<b>STATE OF ILLINOIS DEPARTMENT OF TRANSPORTATION</b>	<b>EXISTING HORIZONTAL &amp; VERTICAL CONTROL</b>				F.A.P. RTE.	SECTION	COUNTY	TOTAL SHEETS	SHEET NO.
n:\proj\0003393.00\contract.1\design\Misc_Sheets\0264884-sht-ATB.dgn		DRAWN -	REVISED -						595	(142-1)R & 142-1)B	ROCK ISLAND	507	76
PLOT SCALE = 100.0000' / IN.		CHECKED -	REVISED -		CONTRACT NO. 64B84				ILLINOIS FED. AID PROJECT				
PLOT DATE = 3/11/2013		DATE -	REVISED -		SCALE:	SHEET NO.	OF SHEETS	STA.	TO STA.				