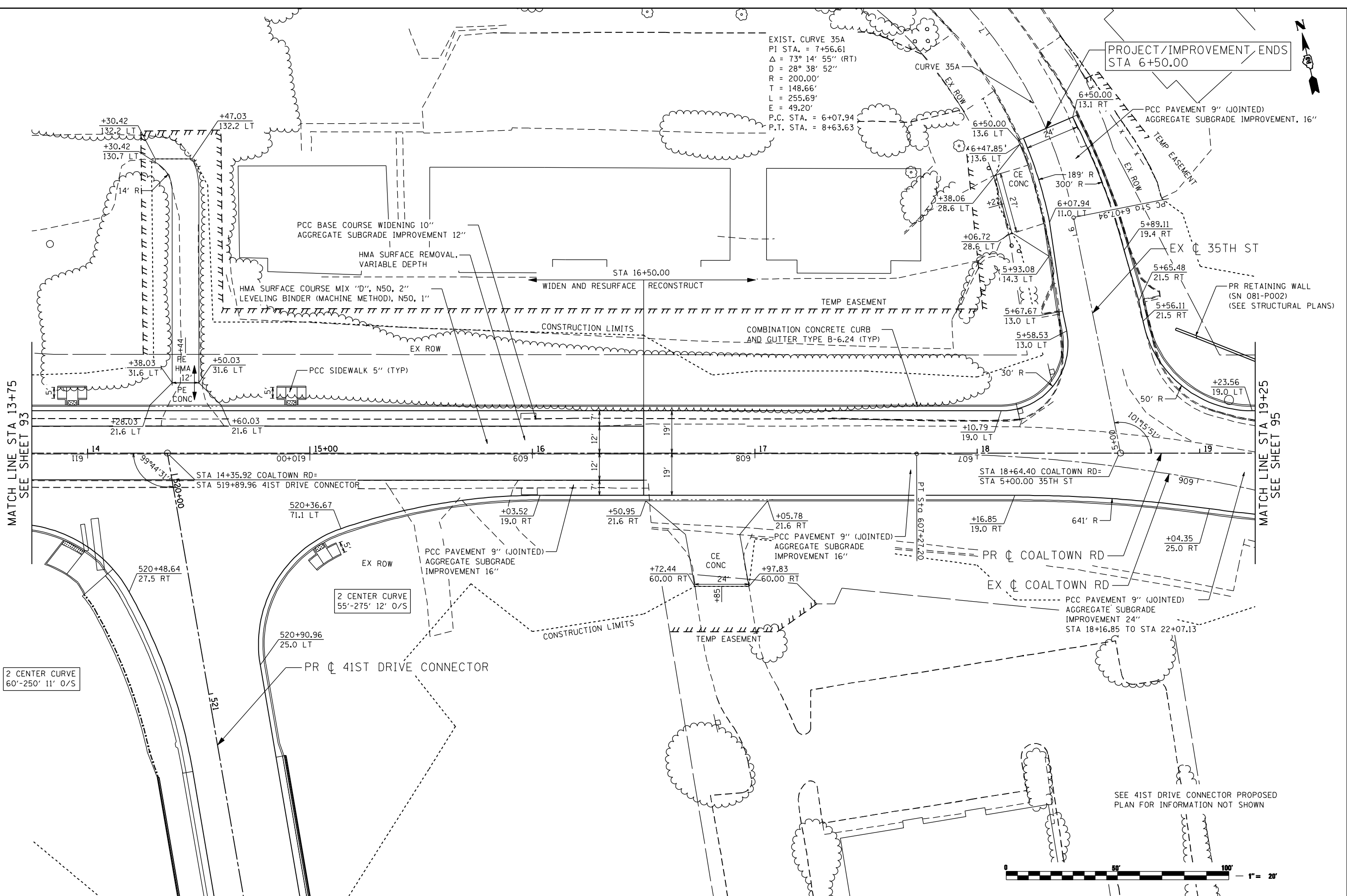




EXIST. CURVE 35A
 PI STA. = 7+56.61
 $\Delta = 73^\circ 14' 55''$ (RT)
 $D = 28^\circ 38' 52''$
 $R = 200.00'$
 $T = 148.66'$
 $L = 255.69'$
 $E = 49.20'$
 P.C. STA. = 6+07.94
 P.T. STA. = 8+63.63

PROJECT/IMPROVEMENT ENDS
 STA 6+50.00



MATCH LINE STA 13+75
 SEE SHEET 93

MATCH LINE STA 19+25
 SEE SHEET 95

2 CENTER CURVE
 60'-250' 11' 0/S

2 CENTER CURVE
 55'-275' 12' 0/S

SEE 41ST DRIVE CONNECTOR PROPOSED
 PLAN FOR INFORMATION NOT SHOWN



FILE NAME = c:\p\proj\0800393\08\cmtv\act\1\Design\Proposed\Plan\0264884-ent-plan-CTR_02.dgn

Ciorba Group, Inc.
 CONSULTING ENGINEERS
 6507 North Cumberland Avenue, Suite 402
 Chicago, Illinois 60656
 Tel. 773.776.4009 Fax 773.776.4014

USER NAME = ntumbv	DESIGNED -	REVISED - ADDENDUM 1 8/15/2013
PLOT SCALE = 48.0000 "/>		

STATE OF ILLINOIS
 DEPARTMENT OF TRANSPORTATION

COALTOWN ROAD
 PROPOSED PLAN

SCALE: SHEET NO. OF SHEETS STA. TO STA.

F.A.P. RTE.	SECTION	COUNTY	TOTAL SHEETS	SHEET NO.
595	(142-1)R & 142-1)B	ROCK ISLAND	507	94
CONTRACT NO. 64B84				
ILLINOIS FED. AID PROJECT				