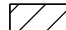
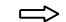

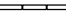
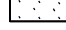


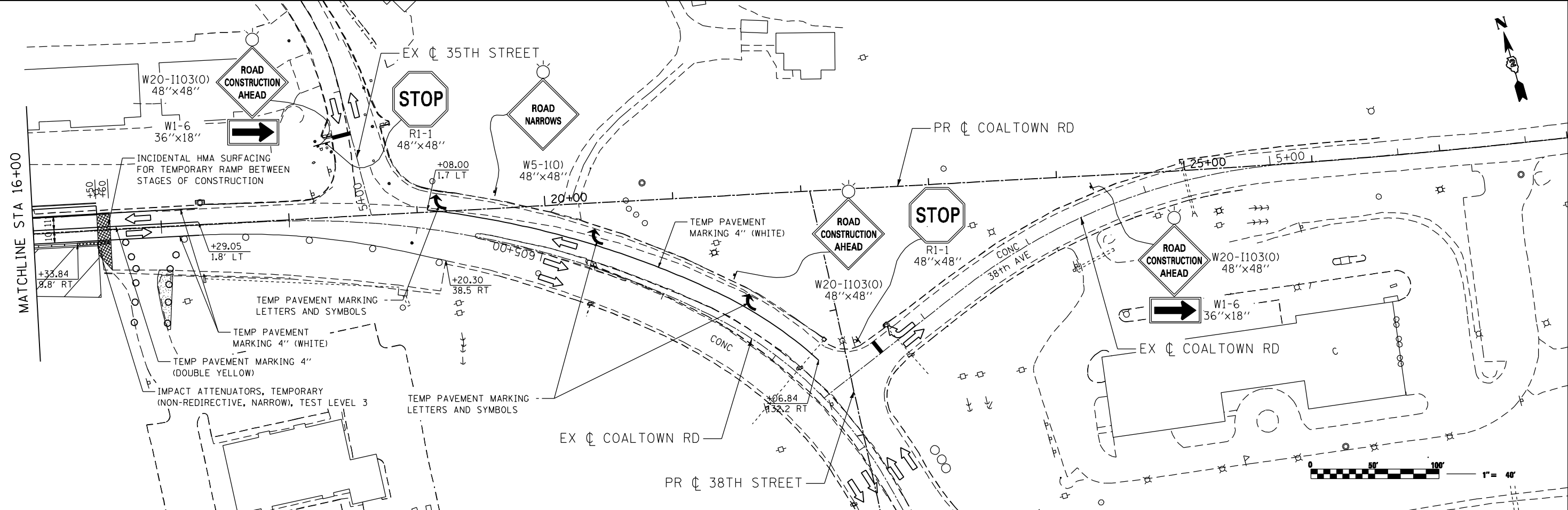
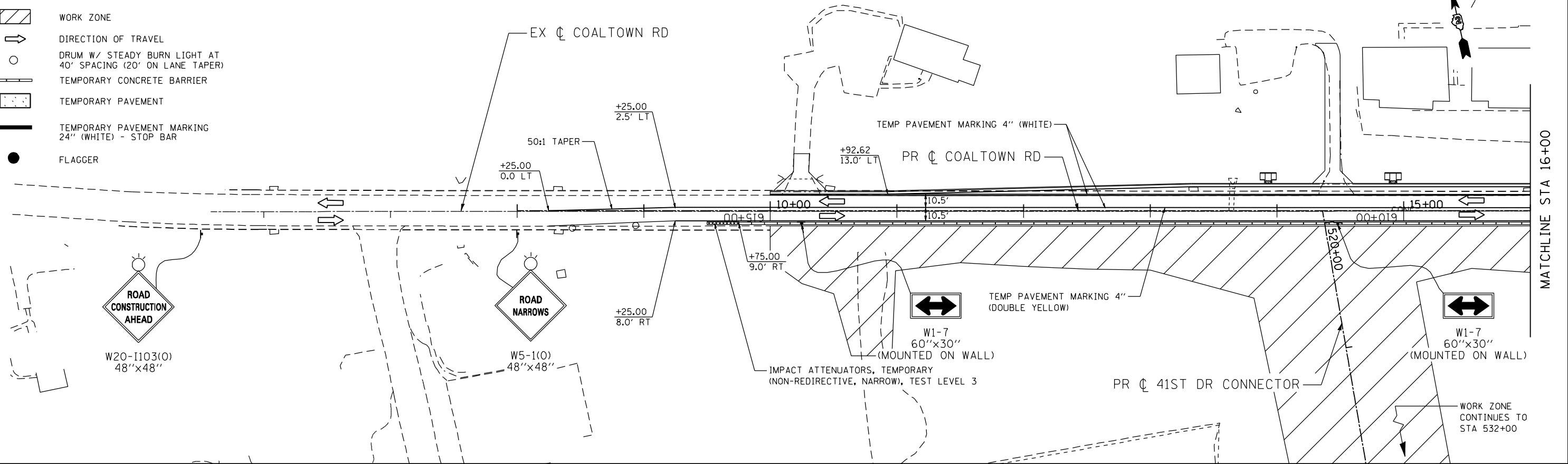


MAINTENANCE OF TRAFFIC LEGEND

-  WORK ZONE
-  DIRECTION OF TRAVEL
-  DRUM W/ STEADY BURN LIGHT AT 40' SPACING (20' ON LANE TAPER)
-  TEMPORARY CONCRETE BARRIER
-  TEMPORARY PAVEMENT
-  TEMPORARY PAVEMENT MARKING 24" (WHITE) - STOP BAR
-  FLAGGER



FILE NAME: c:\projects\080319108\contract\1\design\DOT\Sheet Files\0264884-ant-Stage 2_03.dgn

Ciorba Group, Inc.
 CONSULTING ENGINEERS
 6507 North Cumberland Avenue, Suite 402
 Chicago, Illinois 60656
 Tel. 773.776.4009 Fax 773.776.4014

USER NAME = espino	DESIGNED -	REVISED -
PLOT SCALE = 88.0000" / IN.	DRAWN -	REVISED -
PLOT DATE = 3/11/2013	CHECKED -	REVISED -
	DATE = 3/11/2013	REVISED -

**STATE OF ILLINOIS
 DEPARTMENT OF TRANSPORTATION**

**MAINTENANCE OF TRAFFIC - STAGE 2
 COALTOWN ROAD**

SCALE: SHEET NO. OF SHEETS STA. TO STA.

F.A.P. RTE.	SECTION	COUNTY	TOTAL SHEETS	SHEET NO.
595	(142-1JR & 142-1HB)	ROCK ISLAND	507	129
CONTRACT NO. 64B84				
ILLINOIS FED. AID PROJECT				