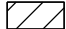
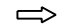


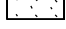


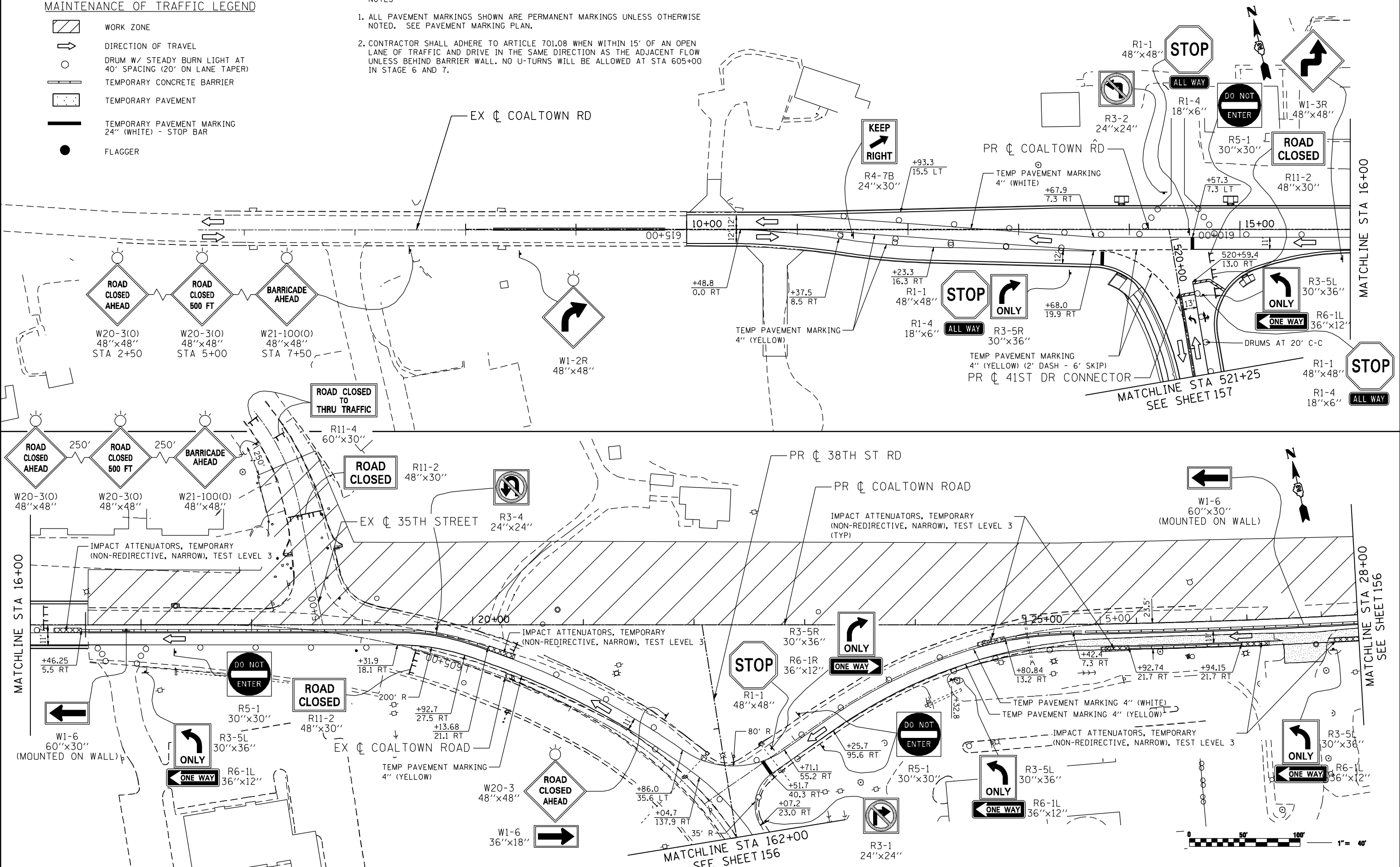


MAINTENANCE OF TRAFFIC LEGEND

-  WORK ZONE
-  DIRECTION OF TRAVEL
-  DRUM W/ STEADY BURN LIGHT AT 40' SPACING (20' ON LANE TAPER)
-  TEMPORARY CONCRETE BARRIER
-  TEMPORARY PAVEMENT
-  TEMPORARY PAVEMENT MARKING 24" (WHITE) - STOP BAR
-  FLAGGER

NOTES

1. ALL PAVEMENT MARKINGS SHOWN ARE PERMANENT MARKINGS UNLESS OTHERWISE NOTED. SEE PAVEMENT MARKING PLAN.
2. CONTRACTOR SHALL ADHERE TO ARTICLE 701.08 WHEN WITHIN 15' OF AN OPEN LANE OF TRAFFIC AND DRIVE IN THE SAME DIRECTION AS THE ADJACENT FLOW UNLESS BEHIND BARRIER WALL. NO U-TURNS WILL BE ALLOWED AT STA 605+00 IN STAGE 6 AND 7.



FILE NAME: c:\p\proj\0802393\08\cont\act\1\Design\NOT\Sheet Files\0264884-ant-Stage 6_01.dgn

Ciorba Group, Inc.
 CONSULTING ENGINEERS
 6507 North Cumberland Avenue, Suite 402
 Chicago, Illinois 60656
 Tel. 773.775.4009 Fax 773.775.4014

USER NAME = ntumbv	DESIGNED -	REVISED - ADDENDUM 1 8/15/2013
PLOT SCALE = 80.0000' / IN.	DRAWN -	REVISED -
PLOT DATE = 8/14/2013	CHECKED -	REVISED -
	DATE - 8/14/2013	REVISED -

**STATE OF ILLINOIS
 DEPARTMENT OF TRANSPORTATION**

MAINTENANCE OF TRAFFIC - STAGE 6 COALTOWN ROAD				
SCALE:	SHEET NO.	OF SHEETS	STA.	TO STA.

F.A.P. RTE.	SECTION	COUNTY	TOTAL SHEETS	SHEET NO.
595	(142-11R & 142-11B)	ROCK ISLAND	507	155
CONTRACT NO. 64B84				
ILLINOIS FED. AID PROJECT				