







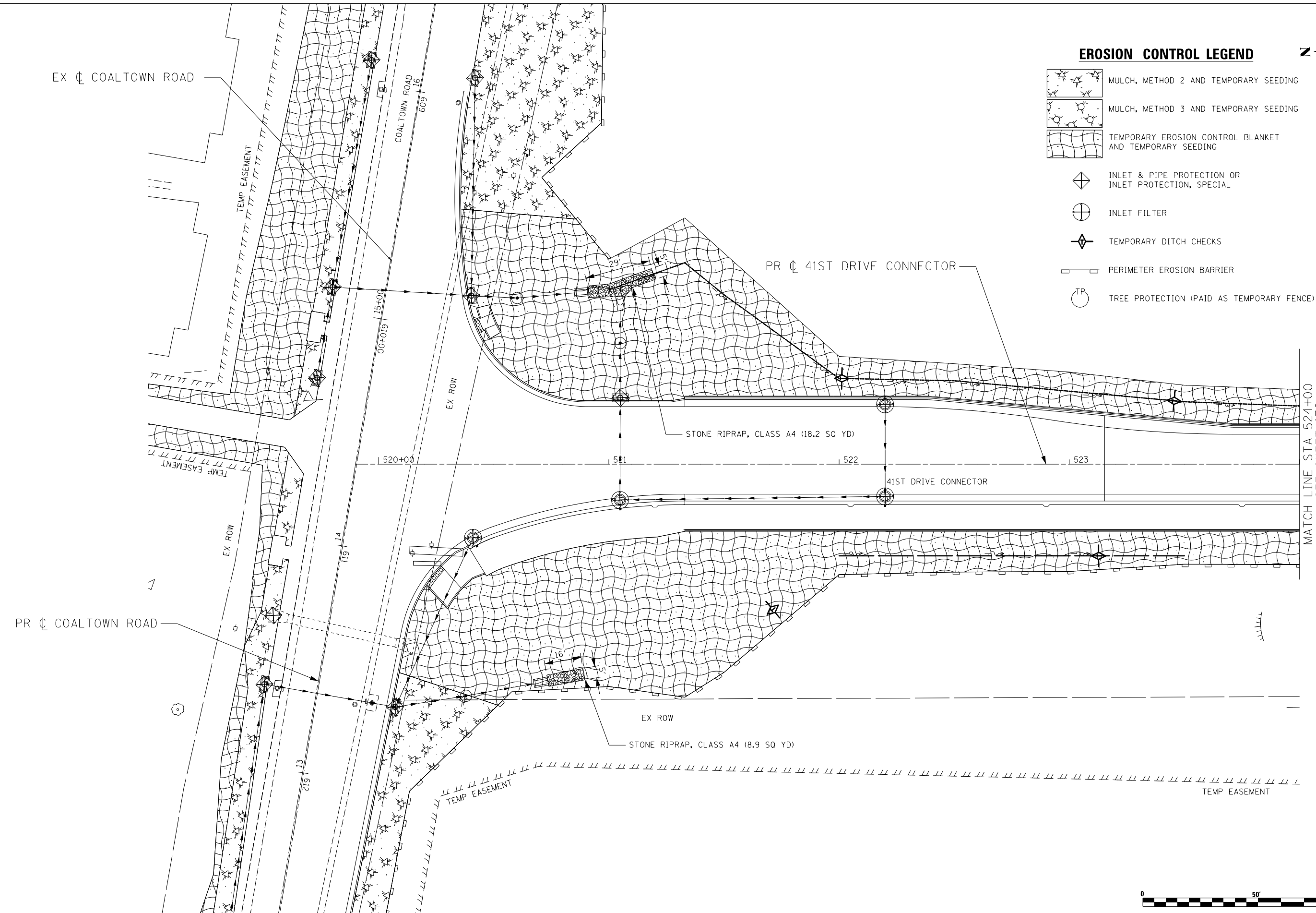


**EROSION CONTROL LEGEND**



-  MULCH, METHOD 2 AND TEMPORARY SEEDING
-  MULCH, METHOD 3 AND TEMPORARY SEEDING
-  TEMPORARY EROSION CONTROL BLANKET AND TEMPORARY SEEDING
-  INLET & PIPE PROTECTION OR INLET PROTECTION, SPECIAL
-  INLET FILTER
-  TEMPORARY DITCH CHECKS
-  PERIMETER EROSION BARRIER
-  TREE PROTECTION (PAID AS TEMPORARY FENCE)



**Lin Engineering, Ltd.**  
Consulting Engineers  
Springfield, Illinois

|                              |                  |           |
|------------------------------|------------------|-----------|
| USER NAME = Plotted by Lin21 | DESIGNED - RWK   | REVISED - |
|                              | DRAWN - RWK      | REVISED - |
| PLOT SCALE = 40.0000' / in.  | CHECKED - ST     | REVISED - |
| PLOT DATE = 3/11/2013        | DATE - 3/11/2013 | REVISED - |

**STATE OF ILLINOIS**  
**DEPARTMENT OF TRANSPORTATION**

**41ST DRIVE CONNECTOR**  
**TEMPORARY EROSION CONTROL**

SCALE: 1"=20'      SHEET NO. 8 OF 17 SHEETS      STA. 520+00 TO STA. 524+00

| F.A.P. R.T.E.                                      | SECTION              | COUNTY      | TOTAL SHEETS | SHEET NO. |
|--|----------------------|-------------|--------------|-----------|
| 595  | (142-11R-1, 142-11B) | ROCK ISLAND | 507          | 169       |
| CONTRACT NO. 64B84                                 |                      |             |              |           |
| FED. ROAD DIST. NO. 2    ILLINOIS FED. AID PROJECT |                      |             |              |           |