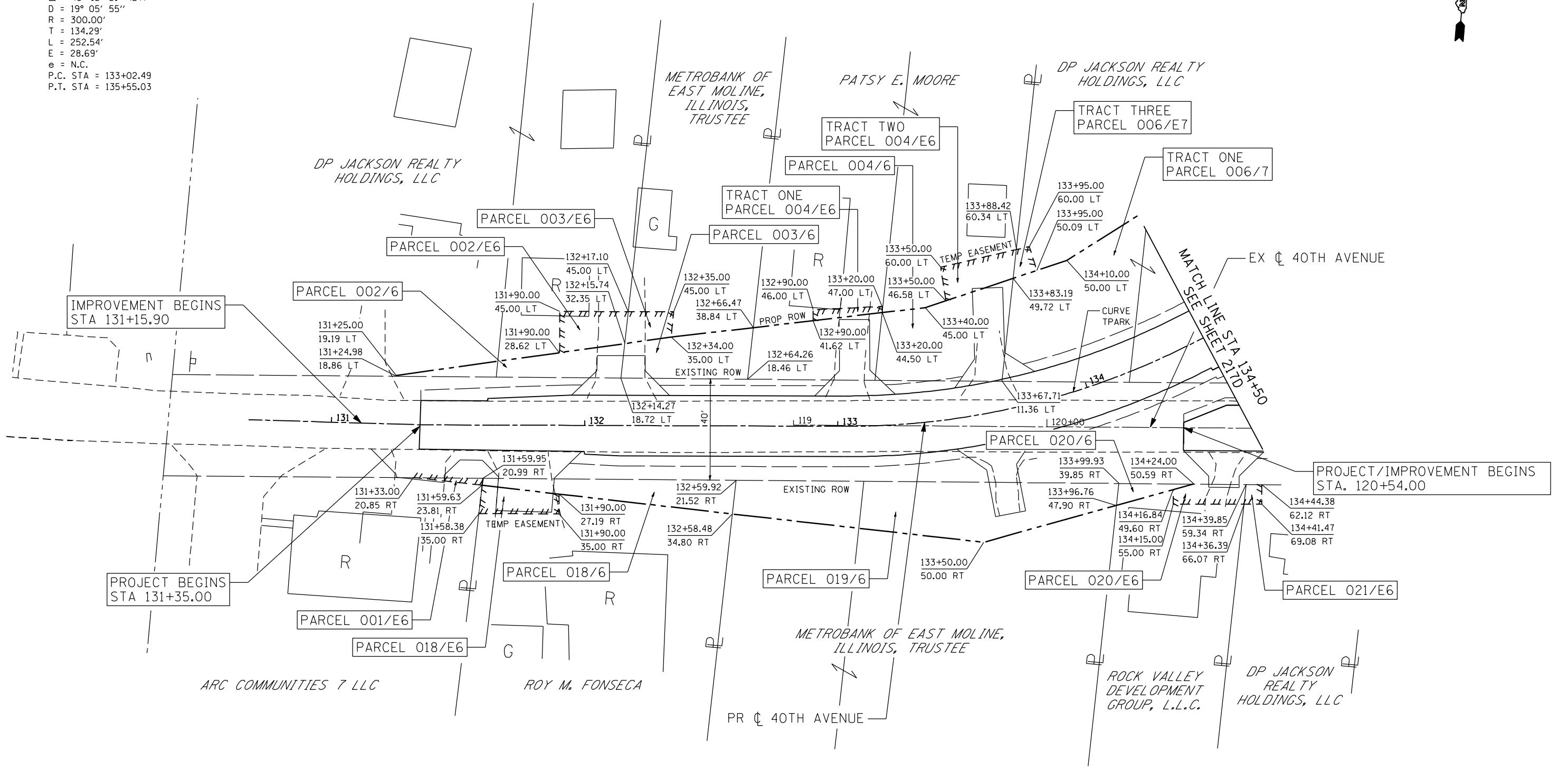




PROP. CURVE TPARK
 PI STA. = 134+36.78
 $\Delta = 48^\circ 13' 51''$ (LT)
 $D = 19^\circ 05' 55''$
 $R = 300.00'$
 $T = 134.29'$
 $L = 252.54'$
 $E = 28.69'$
 $e = N.C.$
 P.C. STA = 133+02.49
 P.T. STA = 135+55.03



IMPROVEMENT BEGINS
 STA 131+15.90

PROJECT BEGINS
 STA 131+35.00

PROJECT/IMPROVEMENT BEGINS
 STA. 120+54.00

MATCH LINE STA 134+50
 SEE SHEET 217D



FILE NAME: n:\proj\080319108\contract\1\design\right-of-way\0264884-ant-ROW-plan_40th_01.dgn

Ciorba Group, Inc.
 CONSULTING ENGINEERS
 6507 North Cumberland Avenue, Suite 402
 Chicago, Illinois 60656
 Tel. 773.776.4009 Fax 773.776.4014

USER NAME = ntumbv	DESIGNED -	REVISED - ADDENDUM 1 8/15/2013
PLOT SCALE = 48.0000" / IN.	DRAWN -	REVISED -
PLOT DATE = 8/15/2013	CHECKED -	REVISED -
	DATE - 8/15/2013	REVISED -

STATE OF ILLINOIS
 DEPARTMENT OF TRANSPORTATION

PROPOSED 40TH AVENUE
 ROW PLANS

SCALE: SHEET NO. OF SHEETS STA. TO STA.

F.A.P. RTE.	SECTION	COUNTY	TOTAL SHEETS	SHEET NO.
595	(142-1)R & 142-1)B	ROCK ISLAND	507	217C
CONTRACT NO. 64B84				
ILLINOIS FED. AID PROJECT				