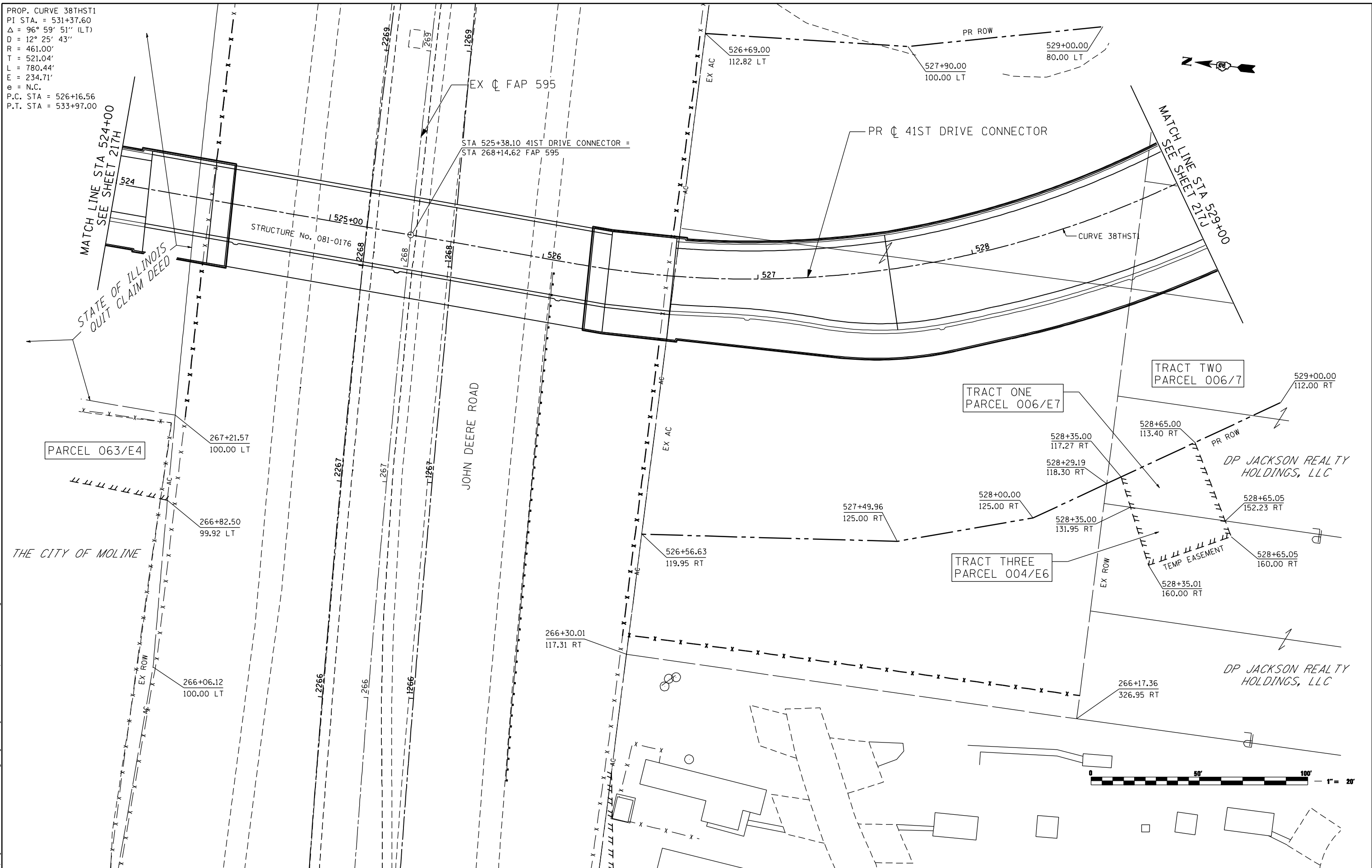


PROP. CURVE 38THST1
 PI STA. = 531+37.60
 $\Delta = 96^\circ 59' 51''$ (LT)
 $D = 12^\circ 25' 43''$
 $R = 461.00'$
 $T = 521.04'$
 $L = 780.44'$
 $E = 234.71'$
 $e = N.C.$
 P.C. STA = 526+16.56
 P.T. STA = 533+97.00



FILE NAME: n:\proj\080319108\contract\1\design\right-of-way\0264884-ant-ROW-plan_Connector_82.dgn



Ciorba Group, Inc. CONSULTING ENGINEERS 6507 North Cumberland Avenue, Suite 402 Chicago, Illinois 60656 Tel. 773.776.4009 Fax 773.776.4014	USER NAME = n\ntumbv	DESIGNED -	REVISED - ADDENDUM 1 8/15/2013	STATE OF ILLINOIS DEPARTMENT OF TRANSPORTATION	41ST DRIVE CONNECTOR ROW PLANS				F.A.P. RTE. 595	SECTION (142-1)R & 142-1)B	COUNTY ROCK ISLAND	TOTAL SHEETS 507	SHEET NO. 2171
	PLOT SCALE = 48.0000' / IN.	CHECKED -	REVISED -		SCALE:	SHEET NO.	OF SHEETS	STA.	TO STA.	CONTRACT NO. 64B84			
	PLOT DATE = 8/15/2013	DATE - 8/15/2013	REVISED -		ILLINOIS FED. AID PROJECT								