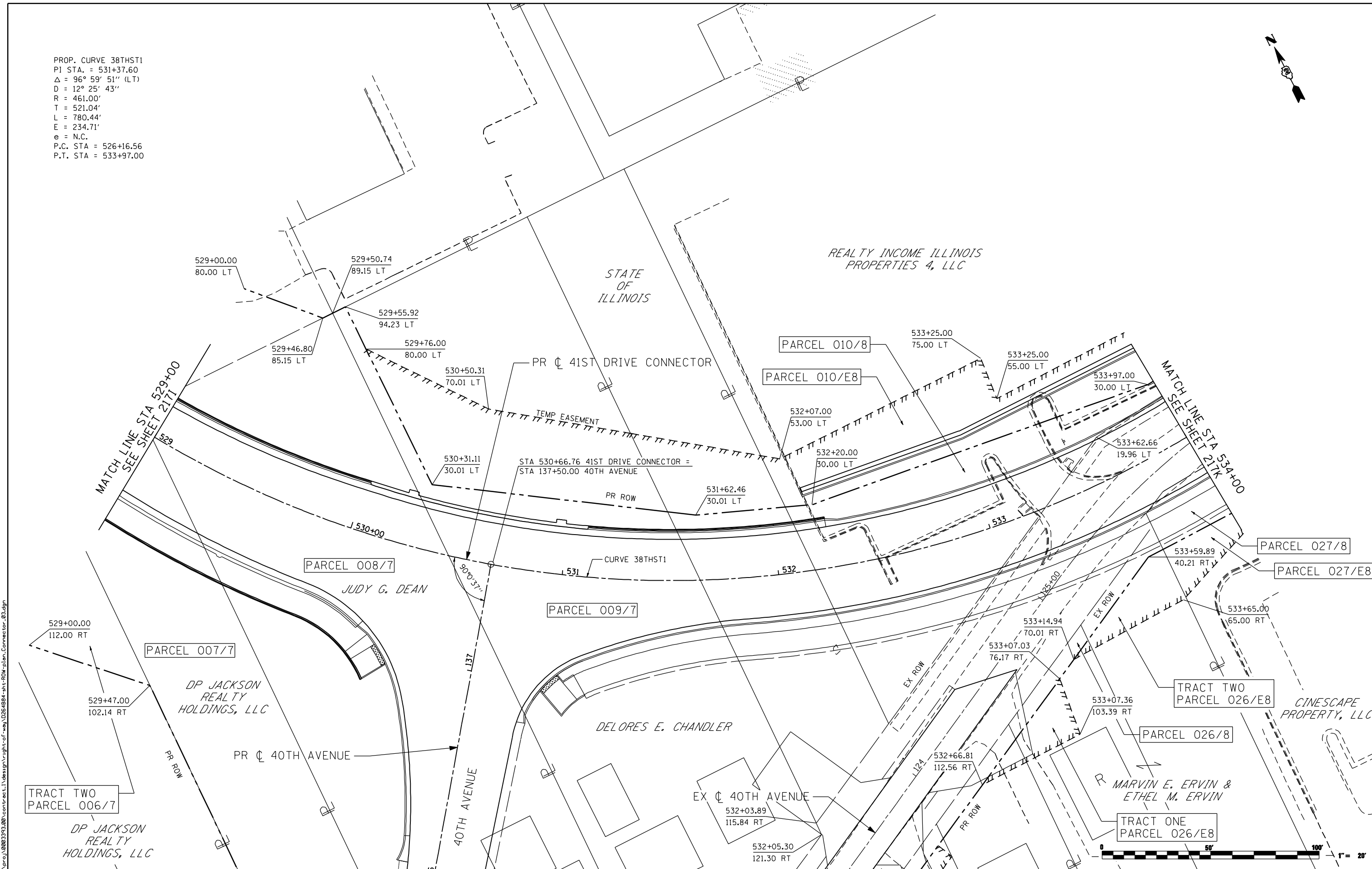
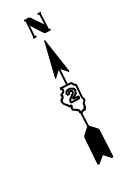


PROP. CURVE 38THST1
 PI STA. = 531+37.60
 $\Delta = 96^\circ 59' 51''$ (LT)
 $D = 12^\circ 25' 43''$
 $R = 461.00'$
 $T = 521.04'$
 $L = 780.44'$
 $E = 234.71'$
 $e = N.C.$
 P.C. STA = 526+16.56
 P.T. STA = 533+97.00



FILE NAME: c:\projects\0803131\08\contract\1\design\right-of-way\0264884-ant-row-plan-Connector_03.dgn

Ciorba Group, Inc.
 CONSULTING ENGINEERS
 6507 North Cumberland Avenue, Suite 402
 Chicago, Illinois 60656
 Tel. 773.776.4009 Fax 773.776.4014

USER NAME = ntumbv	DESIGNED -	REVISED - ADDENDUM 1 8/15/2013
	DRAWN -	REVISED -
PLOT SCALE = 48.0000 "/ IN.	CHECKED -	REVISED -
PLOT DATE = 8/15/2013	DATE - 8/15/2013	REVISED -

**STATE OF ILLINOIS
 DEPARTMENT OF TRANSPORTATION**

**41ST DRIVE CONNECTOR
 ROW PLANS**

SCALE: SHEET NO. OF SHEETS STA. TO STA.

F.A.P. RTE. 595	SECTION (142-1)R & 142-1)B	COUNTY ROCK ISLAND	TOTAL SHEETS 507	SHEET NO. 217J
CONTRACT NO. 64B84				
ILLINOIS FED. AID PROJECT				