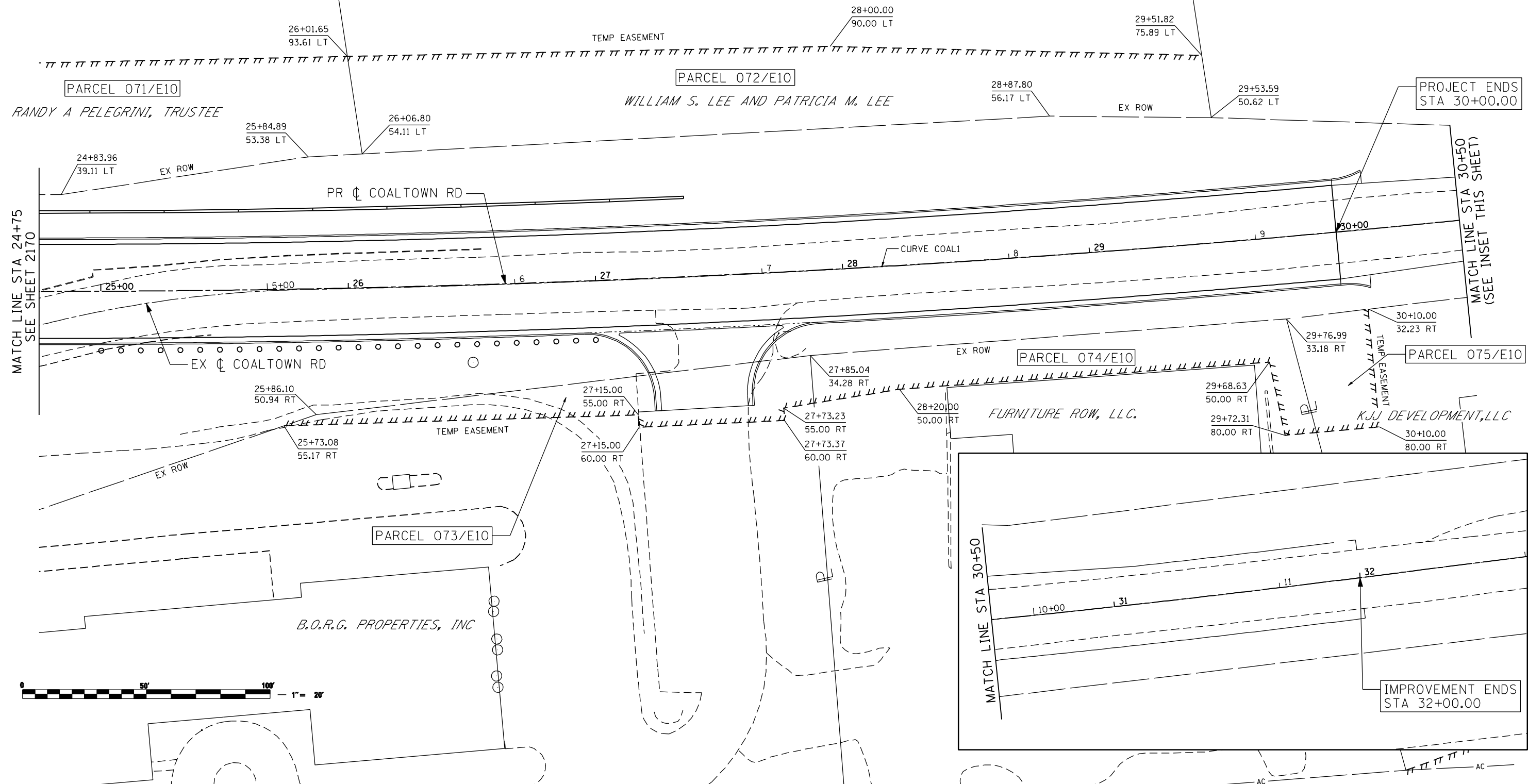


PROP. CURVE COAL1
 PI STA. = 28+35.98
 $\Delta = 7^\circ 11' 46''$ (LT)
 $D = 1^\circ 00' 00''$
 $R = 5,729.58'$
 $T = 360.27'$
 $L = 719.60'$
 $E = 11.32'$
 $e = N.C.$
 P.C. STA = 24+75.71
 P.T. STA = 31+95.31



MATCH LINE STA 24+75
SEE SHEET 2170

PROJECT ENDS
STA 30+00.00

MATCH LINE STA 30+50
(SEE INSET THIS SHEET)

MATCH LINE STA 30+50

IMPROVEMENT ENDS
STA 32+00.00

FILE NAME: m:\proj\080319108\contract\1\design\right-of-way\0264884-ant-R0V-plan-CTR_04.dgn

Ciorba Group, Inc.
 CONSULTING ENGINEERS
 6507 North Cumberland Avenue, Suite 402
 Chicago, Illinois 60656
 Tel. 773.776.4009 Fax 773.776.4014

USER NAME = ntumbv	DESIGNED -	REVISED - ADDENDUM 1 8/15/2013
PLOT SCALE = 48.0000 "/ IN.	DRAWN -	REVISED -
PLOT DATE = 8/15/2013	CHECKED -	REVISED -
	DATE - 8/15/2013	REVISED -

STATE OF ILLINOIS
DEPARTMENT OF TRANSPORTATION

COALTOWN ROAD
ROW PLANS

SCALE: SHEET NO. OF SHEETS STA. TO STA.

F.A.P. RTE.	SECTION	COUNTY	TOTAL SHEETS	SHEET NO.
595	(142-1)R & 142-1)B	ROCK ISLAND	507	217P
CONTRACT NO. 64B84				
ILLINOIS FED. AID PROJECT				