

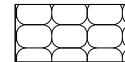
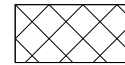
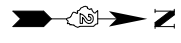
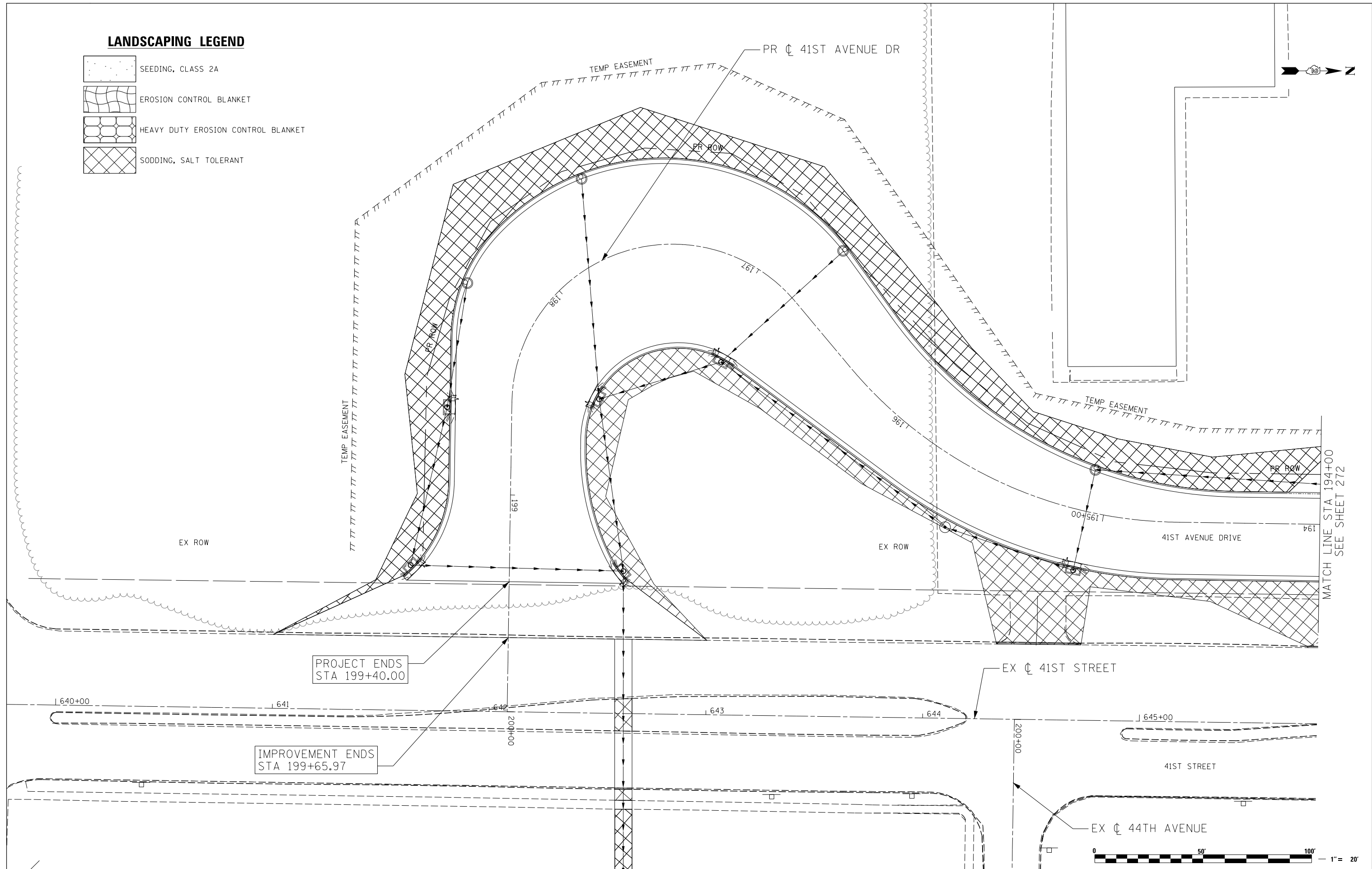


LANDSCAPING LEGEND

-  SEEDING, CLASS 2A
-  EROSION CONTROL BLANKET
-  HEAVY DUTY EROSION CONTROL BLANKET
-  SODDING, SALT TOLERANT



MATCH LINE STA 194+00
SEE SHEET 272

PROJECT ENDS
STA 199+40.00

IMPROVEMENT ENDS
STA 199+65.97



Lin Engineering, Ltd.
Consulting Engineers
Springfield, Illinois

USER NAME = Plotted by LinZl	DESIGNED - RWK	REVISED -
DRAWN - RWK	REVISIONS -	
PLOT SCALE = 40.0000' / in.	CHECKED - ST	REVISED -
PLOT DATE = 3/11/2013	DATE - 3/11/2013	REVISED -

**STATE OF ILLINOIS
DEPARTMENT OF TRANSPORTATION**

**41ST AVENUE DRIVE
PERMANENT EROSION CONTROL AND LANDSCAPING PLANS**

SCALE: 1"=20' SHEET NO. 7 OF 17 SHEETS STA. 194+00 TO STA. 200+00

F.A.P. RTE.	SECTION	COUNTY	TOTAL SHEETS	SHEET NO.
595	(142-1R-1, 142-1HB)	ROCK ISLAND	507	273
FED. ROAD DIST. NO. 2 ILLINOIS FED. AID PROJECT			CONTRACT NO. 64B84	