

EAST EDGE OF SHOULDER

Location	Station	Offset	Theoretical Grade Elevations
N. End of S. Appr. Pav't.	526+30.21	15.80 Lt.	592.96
A3	526+40.56	16.10 Lt.	592.60
A4	526+50.92	16.16 Lt.	592.23
S. End of S. Appr. Pav't.	526+61.28	16.00 Lt.	591.83

EAST EDGE OF PAVEMENT

Location	Station	Offset	Theoretical Grade Elevations
N. End of S. Appr. Pav't.	526+30.32	13.00 Lt.	593.02
A3	526+40.61	13.00 Lt.	592.67
A4	526+50.90	13.00 Lt.	592.29
S. End of S. Appr. Pav't.	526+61.20	13.00 Lt.	591.90

☉ 41st Dr. CONNECTOR AND P.G.

Location	Station	Offset	Theoretical Grade Elevations
N. End of S. Appr. Pav't.	526+30.84	0.00	593.27
A3	526+40.84	0.00	592.93
A4	526+50.84	0.00	592.57
S. End of S. Appr. Pav't.	526+60.84	0.00	592.18

WEST EDGE OF PAVEMENT

Location	Station	Offset	Theoretical Grade Elevations
N. End of S. Appr. Pav't.	526+31.34	13.00 Rt.	592.99
A3	526+41.06	13.00 Rt.	592.65
A4	526+50.79	13.00 Rt.	592.30
S. End of S. Appr. Pav't.	526+60.51	13.00 Rt.	591.93

PARAPET INSIDE FACE

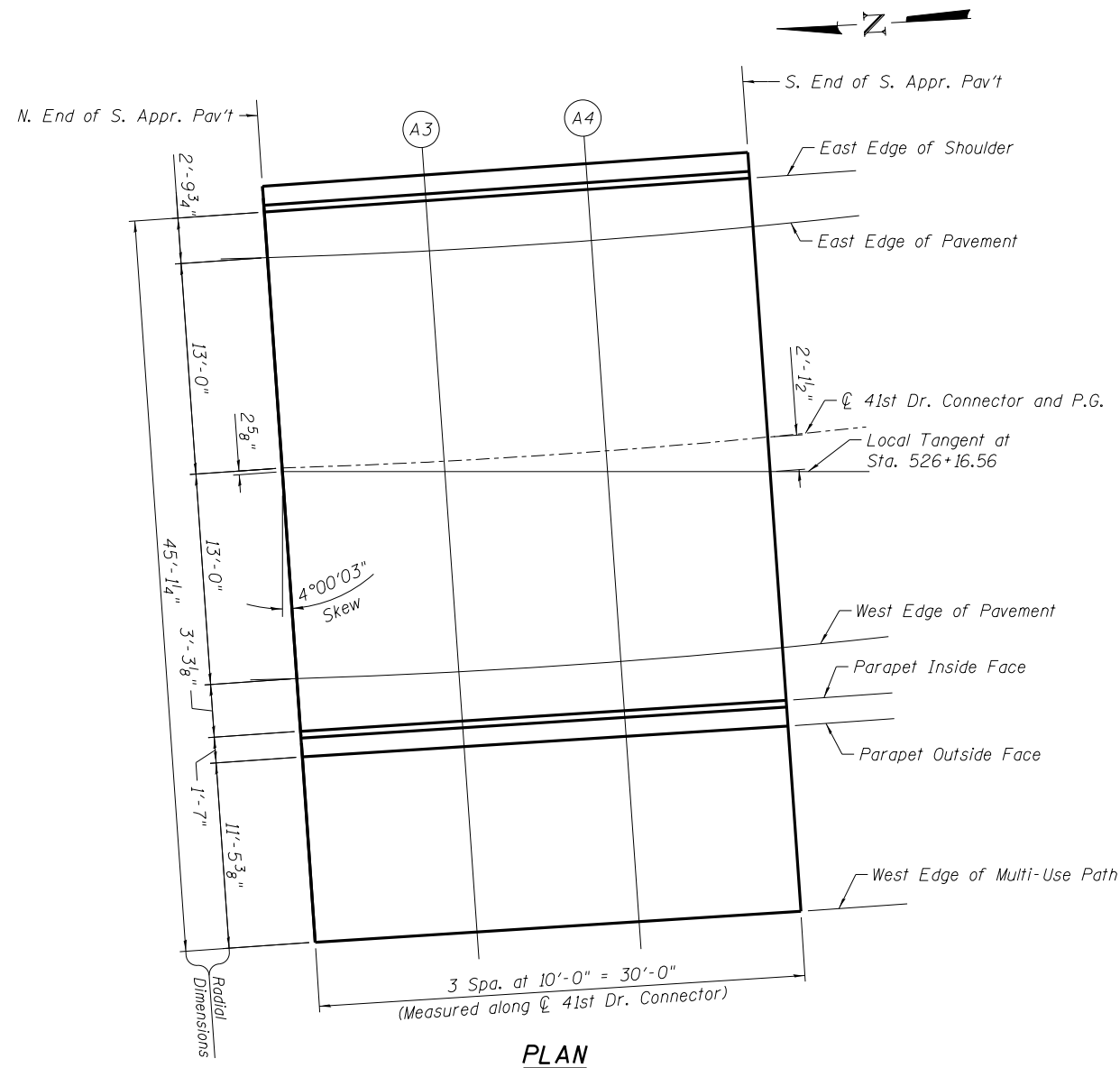
Location	Station	Offset	Theoretical Grade Elevations
N. End of S. Appr. Pav't.	526+31.45	16.25 Rt.	592.91
A3	526+41.11	16.04 Rt.	592.59
A4	526+50.77	16.04 Rt.	592.24
S. End of S. Appr. Pav't.	526+60.43	16.25 Rt.	591.86

PARAPET OUTSIDE FACE

Location	Station	Offset	Theoretical Grade Elevations
N. End of S. Appr. Pav't.	526+31.51	17.84 Rt.	592.88
A3	526+41.14	17.63 Rt.	592.55
A4	526+50.77	17.63 Rt.	592.20
S. End of S. Appr. Pav't.	526+60.39	17.84 Rt.	591.83

WEST EDGE OF MULTI-USE PATH

Location	Station	Offset	Theoretical Grade Elevations
N. End of S. Appr. Pav't.	526+31.91	29.27 Rt.	593.07
A3	526+41.31	29.07 Rt.	592.75
A4	526+50.72	29.07 Rt.	592.41
S. End of S. Appr. Pav't.	526+60.12	29.28 Rt.	592.05



PLAN

N:\PROJ\10003393\CONTRACT\1\Design\Structure\1\CAD\081-0176-D264884-06-Top of South Approach Slab Elevations.dgn



USER NAME = mteng	DESIGNED - MHT	REVISED -
	CHECKED - SMY	REVISED -
PLOT SCALE = 10:8 '1' / in.	DRAWN - RD	REVISED -
PLOT DATE = 3/11/2013	CHECKED - BWS	REVISED -

**STATE OF ILLINOIS
DEPARTMENT OF TRANSPORTATION**

**TOP OF SOUTH APPROACH SLAB ELEVATIONS
STRUCTURE NO. 081-0176**

SHEET NO. S-6 OF S-27 SHEETS

F.A.P. RTE.	SECTION	COUNTY	TOTAL SHEETS	SHEET NO.
595	(142-1JR & 142-1HB)	ROCK ISLAND	507	305
CONTRACT NO. 64B84			ILLINOIS FED. AID PROJECT	