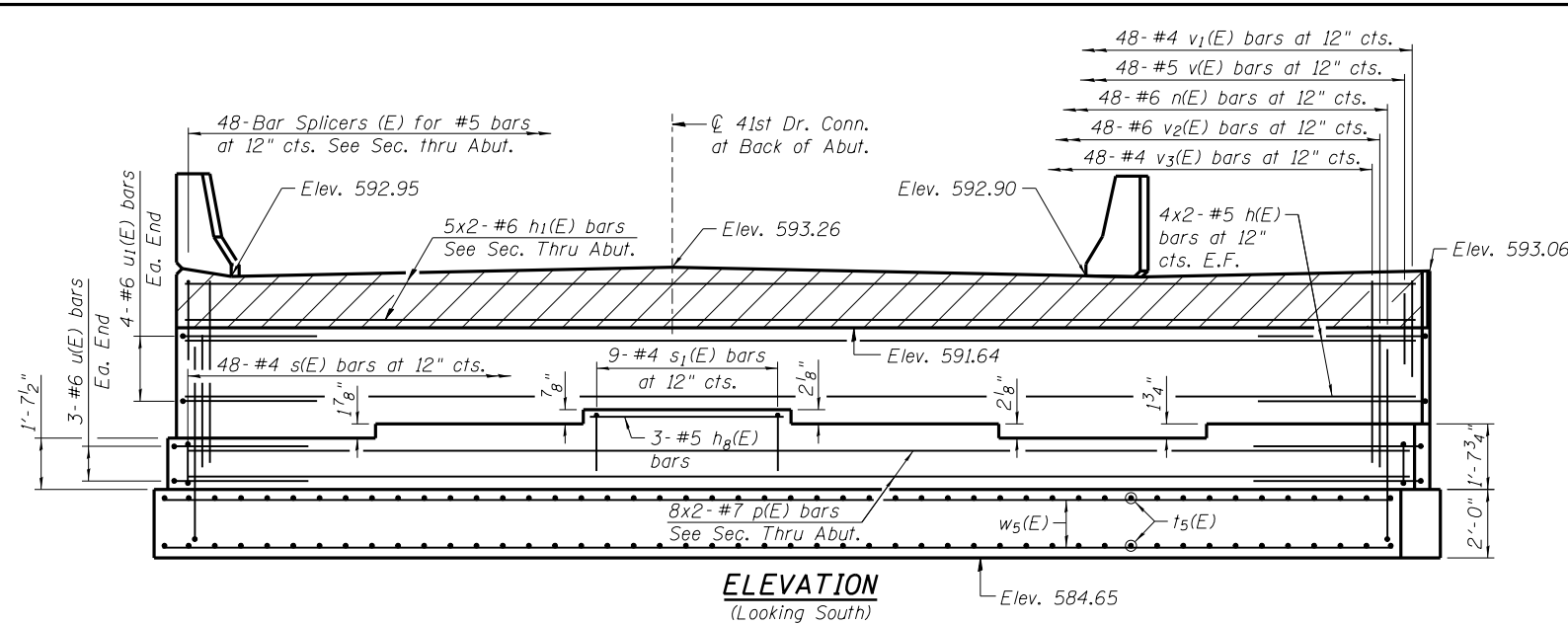
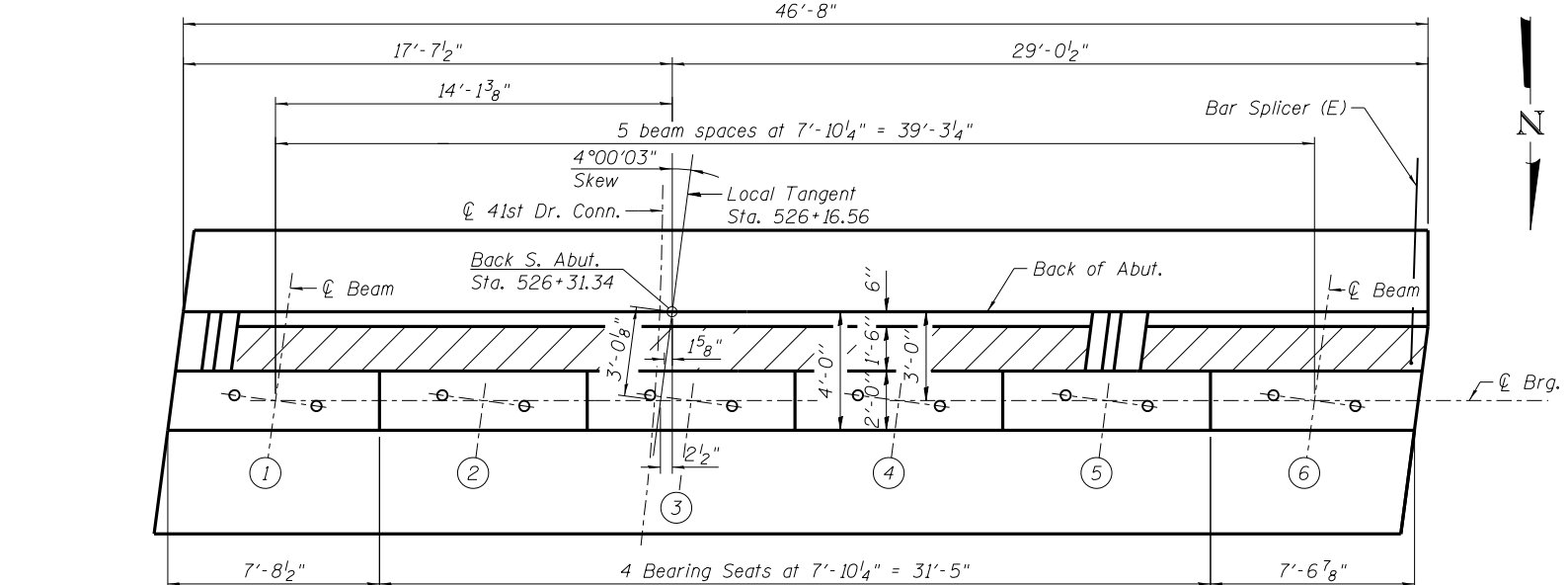


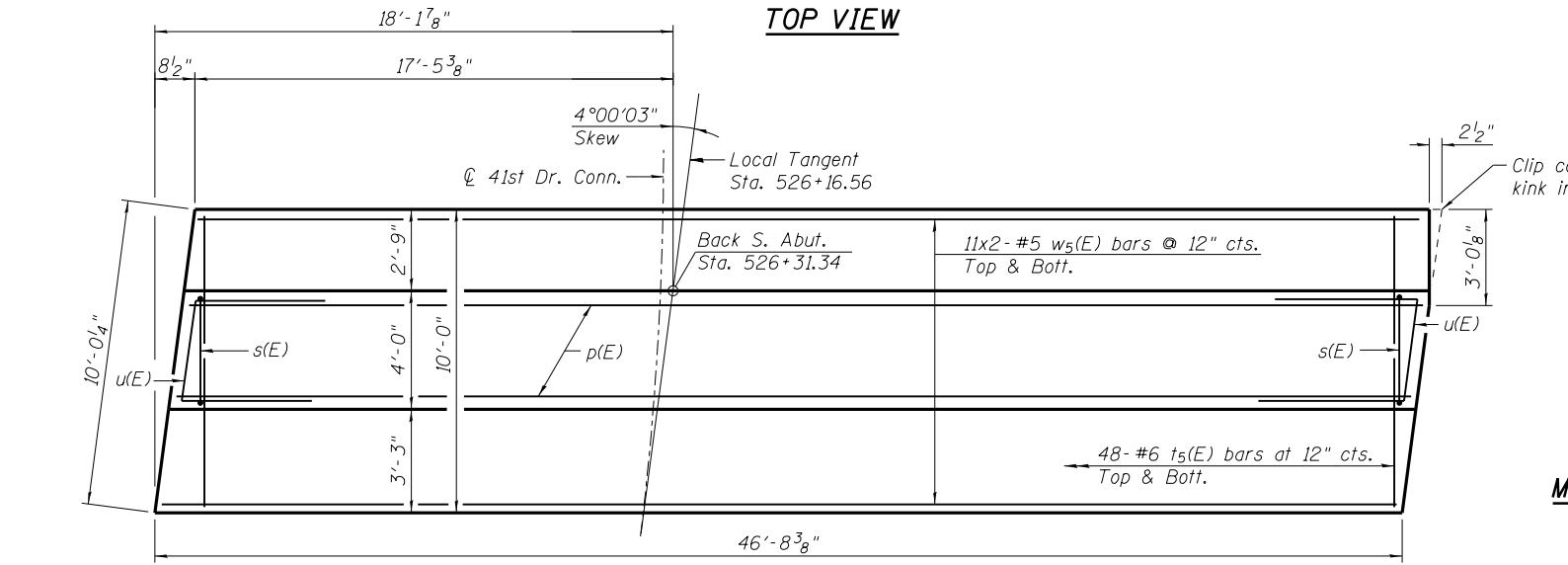
N:\PROJECTS\033333\CONTRACT_1\Design\Structure\1\CAD\081-0176-0264884-21-South Abutment.dgn
 03/11/2013 10:03:33 AM



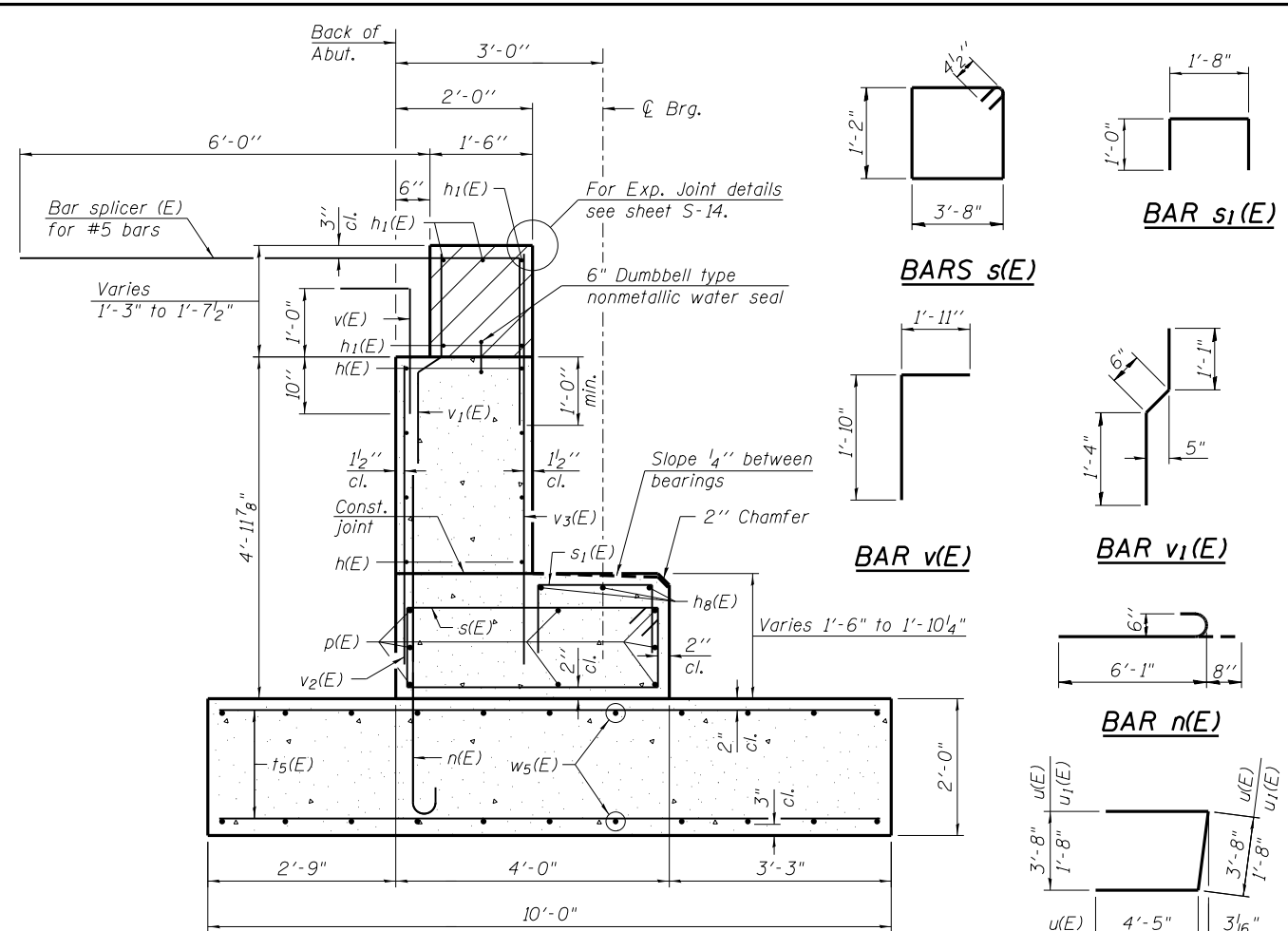
ELEVATION
(Looking South)



TOP VIEW

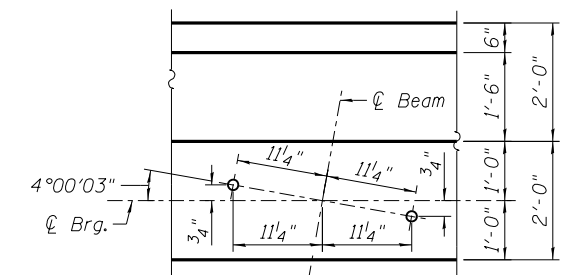


PLAN-BEARING SEAT & FOOTING



SEC. THRU ABUT.

Maximum Applied Service Bearing Pressure: $Q_{max} = 2,420$ psf



**ANCHOR BOLT LOCATION
DETAIL**

ABUTMENT BEARING SEAT ELEVATION

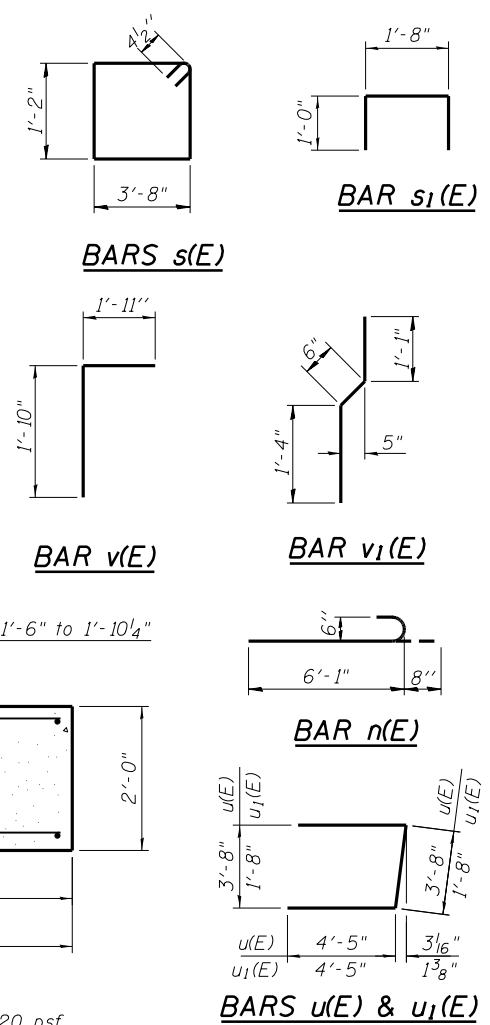
Station	1	2	3	4	5	6
Elevation	588.28	588.43	588.50	588.33	588.15	588.30

NOTES:

1. Pour steps monolithically with bearing seat.
2. For details of Bar Splicers, see sheet S-23.
3. Bars indicated 4x2-#6 etc. indicates 4 lines of bars with 2 lengths per line.
4. Hatched area to be poured after superstructure false work has been removed. Quantity of concrete included with Concrete Superstructure.
5. Space reinforcement in bearing seat to miss anchor bolts.
6. Concrete Sealer to be applied to all exposed surfaces of backwall, bearing seats, front face of bearing seats and footing.

MIN. BAR LAP

- #5 = 3'-8"
- #6 = 4'-5"
- #7 = 5'-10"



**ABUTMENT
BILL OF MATERIAL**
(for both Abutments)

Bar	No.	Size	Length	Shape
h(E)	32	# 5	25'-1"	—
h1(E)	20	# 6	25'-1"	—
h8(E)	6	# 5	7'-6"	—
n(E)	96	# 6	6'-9"	U
p(E)	32	# 7	26'-2"	—
s(E)	96	# 4	10'-5"	□
s1(E)	18	# 4	3'-8"	□
ts(E)	192	# 6	9'-8"	—
u(E)	12	# 6	12'-6"	U
u1(E)	16	# 6	10'-6"	U
v(E)	96	# 5	3'-9"	┌
v1(E)	96	# 4	2'-11"	┌
v2(E)	96	# 6	4'-5"	—
v3(E)	96	# 4	5'-8"	—
ws(E)	88	# 5	25'-1"	—
Concrete Structures		Cu. Yd.	115.5	
Reinforcement Bars, Epoxy Coated		Pound	12,170	
Concrete Sealer		Sq. Ft.	1,143	



USER NAME = mteng	DESIGNED - SMY	REVISED -
PLOT SCALE = 0.200' / 1"	CHECKED - APD	REVISED -
PLOT DATE = 3/11/2013	DRAWN - SMY	REVISED -
	CHECKED - APD	REVISED -

**STATE OF ILLINOIS
DEPARTMENT OF TRANSPORTATION**

**SOUTH ABUTMENT
STRUCTURE NO. 081-0176**
SHEET NO. S-21 OF S-27 SHEETS

F.A.P. RTE.	SECTION	COUNTY	TOTAL SHEETS	SHEET NO.
595	(142-11R & 142-11B)	ROCK ISLAND	507	320
CONTRACT NO. 64B84			ILLINOIS FED. AID PROJECT	