

NOTES:

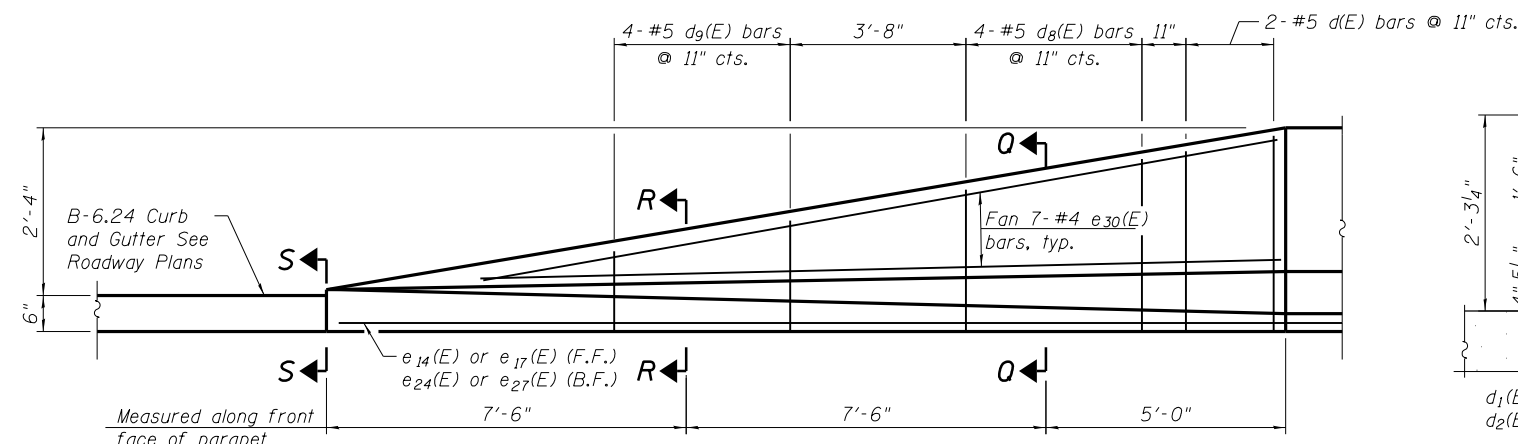
1. Cut $e_{30}(E)$ bars as needed to alleviate congestion near end of parapet.
2. See Sheets SA-4 & SA-6 for $d_1(E)$, $d_2(E)$, and $d_{10}(E)$ spacing.
3. Protective Coat is applied to top of exposed moment slabs, top & inside vertical faces of parapets and top of exposed multi-use path moment slab.

BILL OF MATERIAL

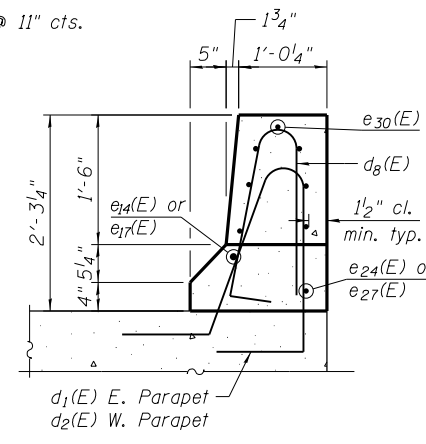
Bar	No.	Size	Length	Shape
$a_1(E)$	184	# 5	7'-6"	┌
$a_2(E)$	997	# 5	4'-10"	┌
$a_3(E)$	419	# 5	7'-3"	┌
$a_4(E)$	578	# 5	7'-3"	┌
$a_5(E)$	278	# 5	7'-9"	┌
$a_6(E)$	235	# 5	7'-9"	┌
$a_7(E)$	283	# 5	6'-1"	┌
$a_8(E)$	283	# 5	2'-8"	┌
$a_9(E)$	8	# 5	4'-3"	┌
$a_{10}(E)$	64	# 5	4'-8"	┌
$b(E)$	184	# 4	22'-11"	┌
$b_1(E)$	276	# 4	31'-10"	┌
$b_2(E)$	60	# 4	35'-8"	┌
$b_3(E)$	80	# 4	24'-4"	┌
$b_{20}(E)$	40	# 4	32'-1"	┌
$c(E)$	16	# 5	2'-6"	┌
$d(E)$	785	# 5	5'-7"	┌
$d_1(E)$	293	# 5	7'-6"	┌
$d_2(E)$	405	# 5	8'-11"	┌
$d_3(E)$	8	# 5	7'-11"	┌
$d_5(E)$	12	# 6	4'-5"	┌
$d_6(E)$	32	# 6	9'-8"	┌
$d_7(E)$	12	# 6	5'-9"	┌
$d_8(E)$	8	# 5	4'-8"	┌
$d_9(E)$	8	# 5	3'-5"	┌
$d_{10}(E)$	24	# 5	7'-3"	┌
$e(E)$	182	# 4	14'-8"	┌
$e_1(E)$	7	# 4	12'-9"	┌
$e_2(E)$	7	# 4	12'-3"	┌
$e_4(E)$	7	# 4	13'-2"	┌
$e_5(E)$	28	# 4	10'-8"	┌
$e_6(E)$	21	# 4	18'-8"	┌
$e_7(E)$	14	# 4	12'-8"	┌
$e_8(E)$	7	# 4	16'-8"	┌
$e_{10}(E)$	1	# 8	42'-9"	┌
$e_{11}(E)$	3	# 8	30'-7"	┌
$e_{12}(E)$	1	# 8	42'-3"	┌
$e_{13}(E)$	8	# 8	33'-3"	┌
$e_{14}(E)$	1	# 8	45'-8"	┌
$e_{15}(E)$	1	# 8	43'-2"	┌
$e_{17}(E)$	1	# 8	36'-2"	┌
$e_{18}(E)$	1	# 8	33'-10"	┌
$e_{19}(E)$	3	# 8	38'-2"	┌
$e_{20}(E)$	2	# 4	22'-11"	┌
$e_{21}(E)$	3	# 4	28'-0"	┌
$e_{22}(E)$	2	# 4	22'-8"	┌
$e_{23}(E)$	8	# 4	31'-4"	┌
$e_{24}(E)$	2	# 4	24'-4"	┌
$e_{25}(E)$	2	# 4	23'-1"	┌
$e_{27}(E)$	1	# 4	36'-2"	┌
$e_{28}(E)$	1	# 4	33'-10"	┌
$e_{29}(E)$	3	# 4	35'-8"	┌
$e_{30}(E)$	14	# 4	19'-8"	┌
$e_{31}(E)$	7	# 4	18'-10"	┌
$e_{32}(E)$	7	# 4	10'-5"	┌
$e_{33}(E)$	7	# 4	18'-5"	┌
Concrete Superstructure		Cu. Yd.	424.5	
Protective Coat		Sq. Yd.	499	
Reinforcement Bars, Epoxy Coated		Pound	53,970	

BILL OF MATERIAL - COPING
(For information only)

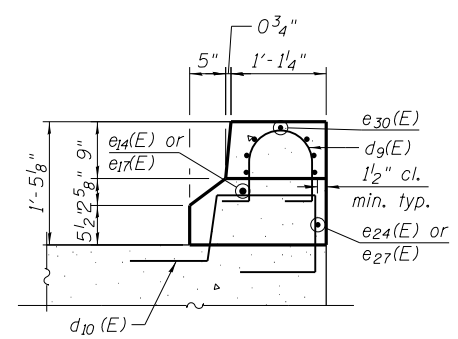
Bar	No.	Size	Length	Shape
$a_{11}(E)$	77	# 4	1'-6"	┌
$h(E)$	10	# 4	25'-7"	┌
$h_1(E)$	20	# 4	18'-7"	┌
$h_2(E)$	10	# 4	11'-2"	┌
$u(E)$	83	# 4	3'-5"	┌
$v(E)$	10	# 4	6'-7"	┌



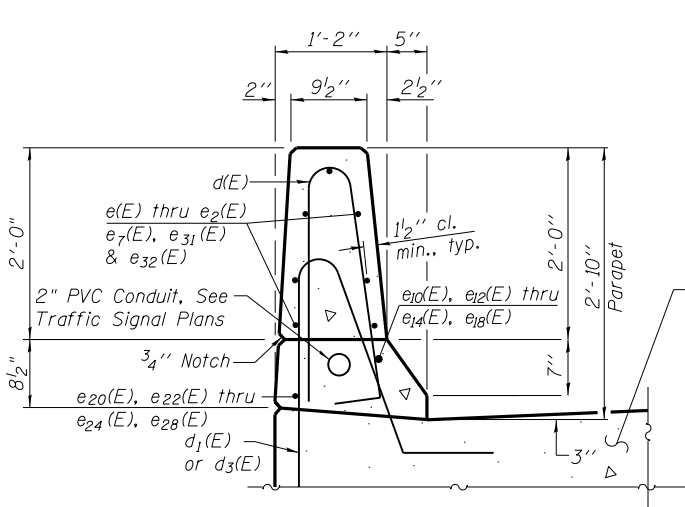
PARAPET TRANSITION DETAIL
(Looking at Front Face of Parapet)



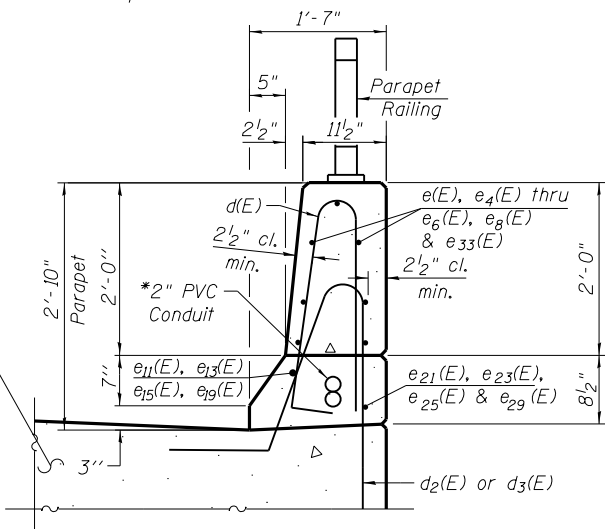
SECTION Q-Q



SECTION R-R

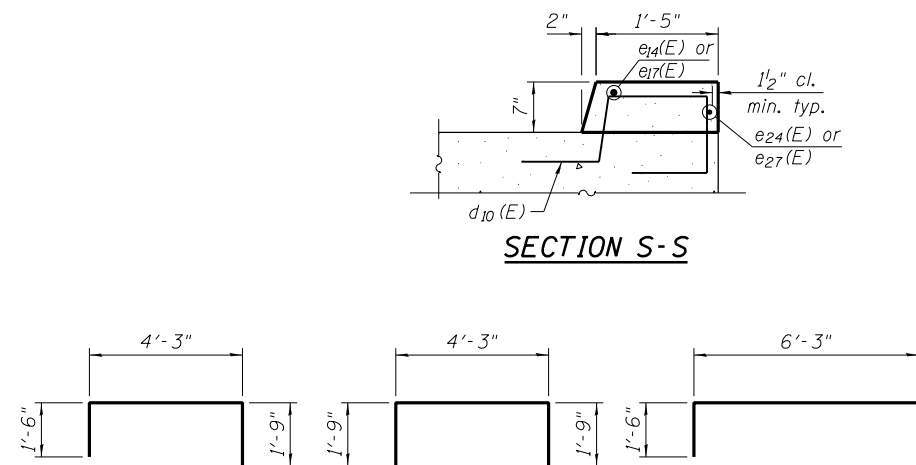


SECTION THRU EAST MOMENT SLAB PARAPET

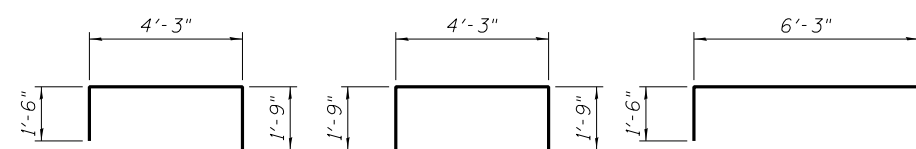


SECTION THRU WEST MOMENT SLAB PARAPET

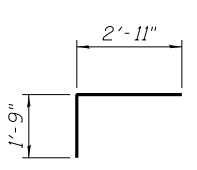
* Conduit Embedded in Structure, 2" Dia., PVC (2 Ea.)



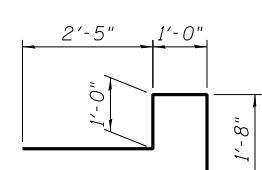
SECTION S-S



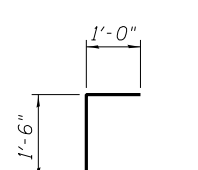
a(E) BAR a4(E) BAR a5(E) BAR



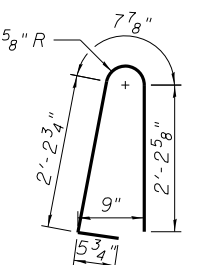
a6(E) BAR



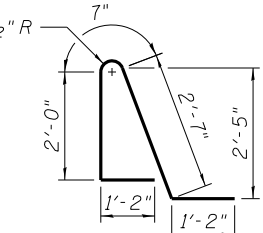
a7(E) BAR



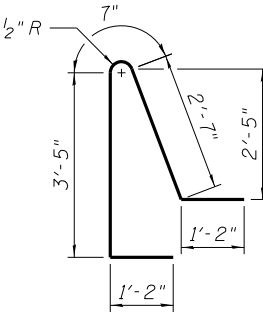
c(E) BAR



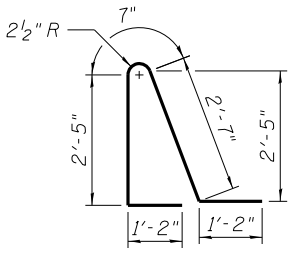
d(E) BAR



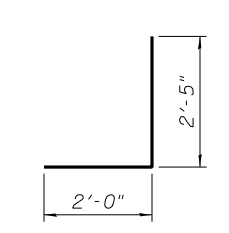
d1(E) BAR



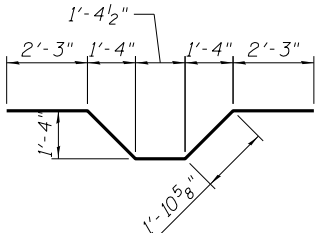
d2(E) BAR



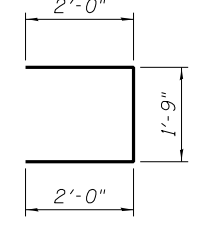
d3(E) BAR



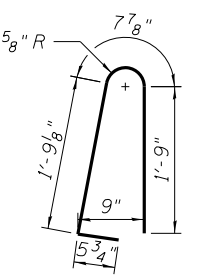
d5(E) BAR



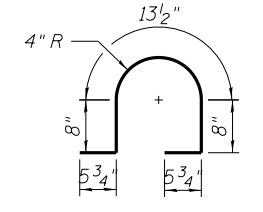
d6(E) BAR



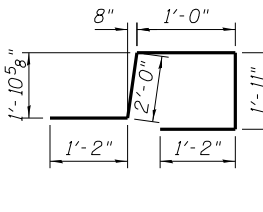
d7(E) BAR



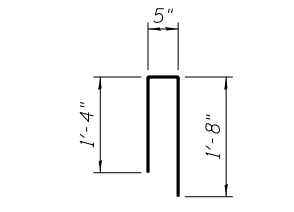
d8(E) BAR



d9(E) BAR



d10(E) BAR



u(E) BAR

N:\PROJECTS\0303303\CONTRACT_1\Design\Structure\CAD\Retaining Wall_081-7002\081-7002_11_Details-3.dgn

Clorba Group, Inc.
CONSULTING ENGINEERS
6051 North Cumberland Avenue
Suite 202 Chicago, Illinois 60656
Tel: 773-774-4000
Fax: 773-774-4014
Email: clorba@clorba.com

USER NAME = mteng
PLOT SCALE = 2/8" 1" = 1'-0"
PLOT DATE = 3/11/2013

DESIGNED - APD
CHECKED - BWS
DRAWN - RD
CHECKED - BWS

REVISED -
REVISED -
REVISED -
REVISED -

STATE OF ILLINOIS
DEPARTMENT OF TRANSPORTATION

DETAILS - 3
STRUCTURE NO. 081-7002
SHEET NO. SA-11 OF SA-16 SHEETS

F.A.P. RTE.	SECTION	COUNTY	TOTAL SHEETS	SHEET NO.
595	(142-1)R-1 AND 142-1)B	ROCK ISLAND	507	337
				CONTRACT NO. 64884
ILLINOIS FED. AID PROJECT				