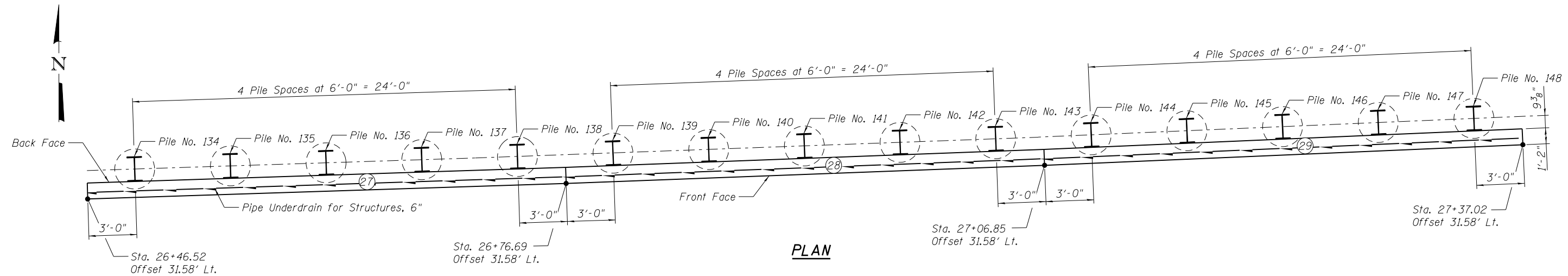
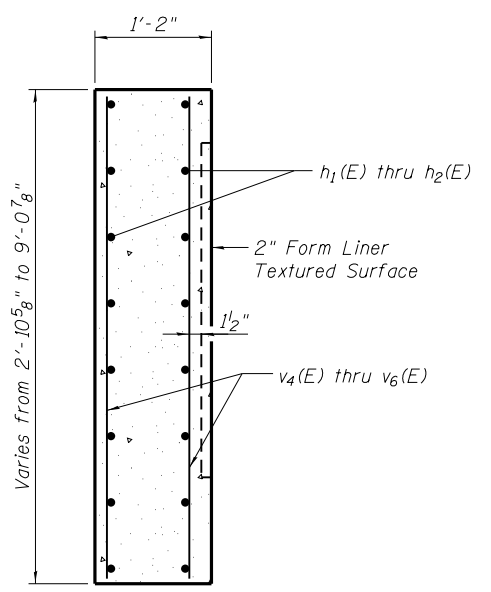


**ELEVATION - PANELS 27 THRU 29**  
 (Looking at Front Face)  
 (Dimensions Measured along Front Face)



**PLAN**



**SECTION THRU  
 CIP FACING**

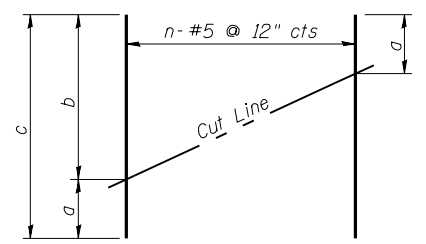
**MINIMUM BAR LAP**  
 #5 bar = 3'-3"

**LEGEND**  
 ⊕ = Panel Number  
 E.F. = Each Face

Notes:  
 For Top of Pile Elevations & Pile Tip Elevations, see Soldier Pile Summary on Sheet SD-3 of SD-18. Space reinforcement to miss shear studs.

**BAR LIST**

Bar	No.	Size	Length	Shape
h <sub>1</sub> (E)	18	#5	29'-9"	—
h <sub>2</sub> (E)	36	#5	33'-3"	—
v <sub>4</sub> (E)	30	#5	16'-7"	—
v <sub>5</sub> (E)	30	#5	15'-1"	—
v <sub>6</sub> (E)	30	#5	9'-8"	—



**FIELD CUTTING DIAGRAM**

Order v<sub>4</sub>(E), v<sub>5</sub>(E) & v<sub>6</sub>(E) full length. Cut as shown and use remainder of bars in opposite face.

Bar	n	a	b	c
v <sub>4</sub> (E)	30	8'-8"	7'-11"	16'-7"
v <sub>5</sub> (E)	30	7'-11"	7'-2"	15'-1"
v <sub>6</sub> (E)	30	7'-2"	2'-6"	9'-8"

(Sheet 10 of 10)