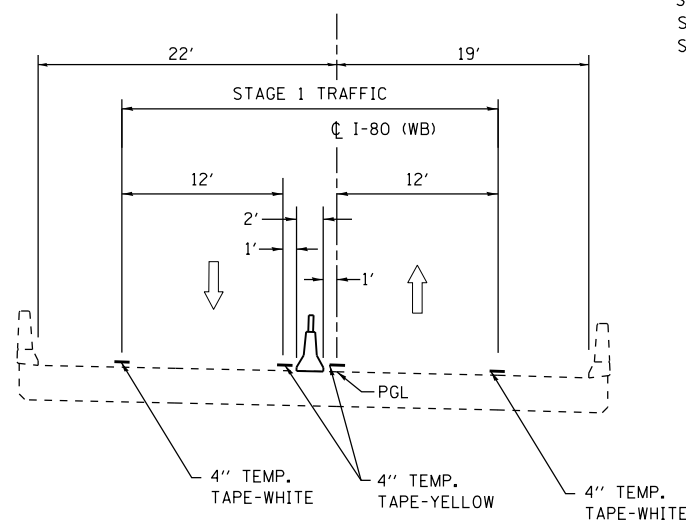


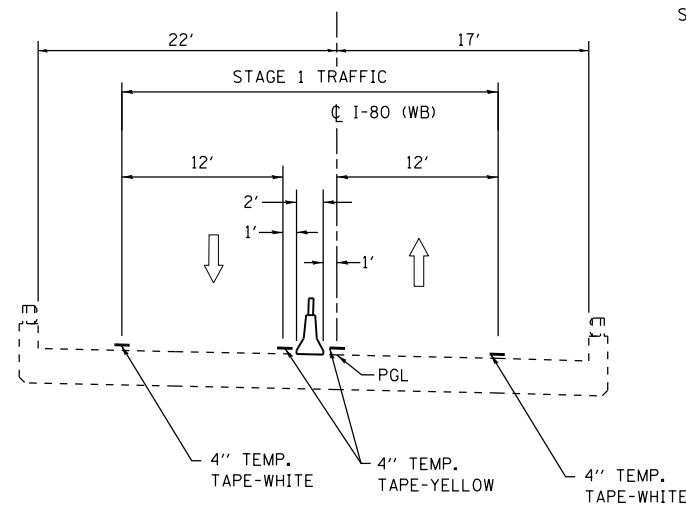
**STAGE 1 MAINLINE**

STA. 409+02.36 TO STA. 422+29.48 WB  
 STA. 424+10.27 TO STA. 425+52.83 WB [1] OMIT SHOULDER REMOVE AND REPLACE IN LAND BRIDGE AREA  
 STA. 426+98.38 TO STA. 440+43.71 WB



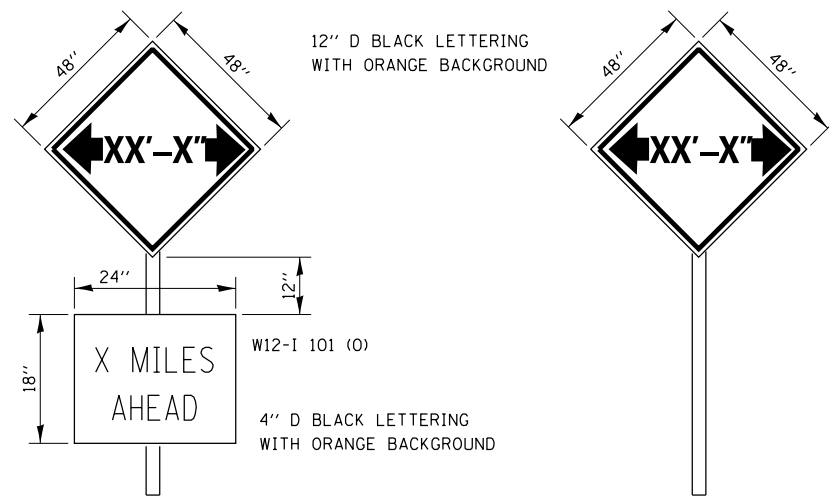
**STAGE 1 THROUGH DEVILS SLOUGH BRIDGE**

STA. 422+29.48 TO STA. 424+10.27 WB



**STAGE 1 THROUGH HENNEPIN CANAL BRIDGE**

STA. 425+52.83 TO STA. 426+98.38 WB



THE ENGINEER WILL SUBMIT AN OPER 2410 PERMIT TO THE CENTRAL BUREAU OF OPERATIONS PERMIT SECTION, 21 CALENDAR DAYS IN ADVANCE OF ANY WIDTH RESTRICTION. THE CONTRACTOR SHALL BE RESPONSIBLE FOR COORDINATING WITH THE ENGINEER TO MEET THIS REQUIREMENT.

COST OF SUPPLYING, INSTALLING, MAINTAINING AND REMOVING WIDTH RESTRICTION SIGNS SHALL BE INCLUDED IN THE COST OF THE TRAFFIC CONTROL AND PROTECTION PAY ITEMS.

**WIDTH RESTRICTION SIGNING DETAILS**

STAGE I WIDTH 17'-6" WB-PLACE SIGN AT INTERCHANGE OF I-80 & RTE. 26  
 19'-0" ACTUAL CLEARANCE AT DEVIL'S SLOUGH AND 19'-0" ACTUAL CLEARANCE AT HENNEPIN

STAGE I WIDTH 16'-6" EB-PLACE SIGN AT INTERCHANGE OF I-80 & RTE. 78  
 20'-0" ACTUAL CLEARANCE AT DEVIL'S SLOUGH AND 18'-0" ACTUAL CLEARANCE AT HENNEPIN

FILE NAME = D366998-sht-staging.dgn	USER NAME = brianheil	DESIGNED -	REVISED -	STATE OF ILLINOIS DEPARTMENT OF TRANSPORTATION	STAGE 1 CONSTRUCTION TYPICAL SECTIONS			F.A.I RTE.	SECTION	COUNTY	TOTAL SHEETS	SHEET NO.
	PLOT TIME = 7:18:30 PM	DRAWN -	REVISED -					80	(06-2) BR-3,4		133	28
	PLOT SCALE = 100.0000' / in.	CHECKED -	REVISED -		SCALE: 1"=50'	SHEET 1 OF 11 SHEETS	STA.	TO STA.	CONTRACT NO. 66998			
	PLOT DATE = 7/30/2013	DATE -	REVISED -		ILLINOIS FED. AID PROJECT							