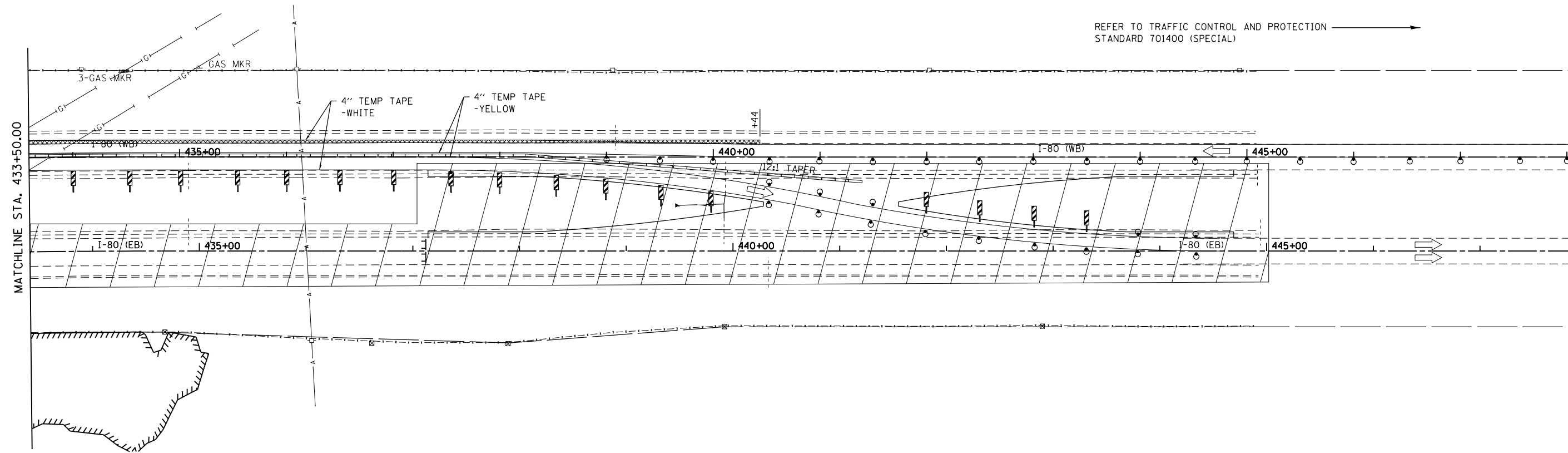





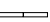

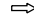


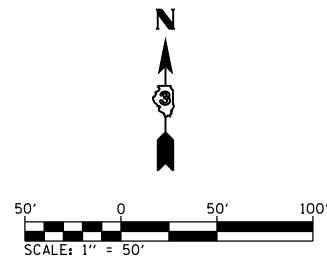
NOTE:
SEE HIGHWAY STANDARD 701416 FOR DETAILS NOT SHOWN



REFER TO TRAFFIC CONTROL AND PROTECTION
STANDARD 701400 (SPECIAL)

LEGEND

-  WORK AREA
-  PAVEMENT REMOVAL
-  DRUM WITH STEADY BURNING MONODIRECTIONAL LIGHT
-  TYPE II BARRICADE WITH STEADY BURN MONODIRECTIONAL LIGHT
-  VERTICAL PANEL
-  TEMPORARY CONCRETE BARRIER
-  TYPE III BARRICADES WITH TWO STEADY BURNING LIGHTS
-  DIRECTION OF TRAFFIC



FILE NAME = D366998-sht-staging.dgn	USER NAME = brianheil	DESIGNED -	REVISED -
	PLOT TIME = 7:18:32 PM	DRAWN -	REVISED -
	PLOT SCALE = 100.0000' / in.	CHECKED -	REVISED -
	PLOT DATE = 7/30/2013	DATE -	REVISED -

**STATE OF ILLINOIS
DEPARTMENT OF TRANSPORTATION**

**SUGGESTED STAGE CONSTRUCTION
STAGE 1**

SCALE: 1"=50' SHEET 5 OF 11 SHEETS STA. 433+50.00 TO STA. 445+00.00

F.A.I. RTE.	SECTION	COUNTY	TOTAL SHEETS	SHEET NO.
80	(06-2) BR-3,4		133	32
CONTRACT NO. 66998				
ILLINOIS FED. AID PROJECT				