

SECTION B-B

MINIMUM BAR LAP
#9 bar = 7'-9"

**TWO CONNECTORS
BILL OF MATERIAL**

Bar	No.	Size	Length	Shape
a20(E)	114	#7	23'-8"	—
a21(E)	60	#7	24'-0"	—
a22(E)	4	#7	32'-11"	—
a23(E)	4	#7	9'-4"	↙
a24(E)	4	#7	9'-4"	↘
b20(E)	96	#9	18'-4"	—
b21(E)	96	#9	50'-2"	—
p20(E)	12	#7	23'-8"	—
s20(E)	200	#5	10'-9"	⊃
s21(E)	48	#4	10'-4"	⊃
u20(E)	12	#6	10'-11"	⊃
x20(E)	96	#5	5'-10"	⊃
x21(E)	96	#5	7'-2"	⊃
Aggregate Subgrade Improvement		Cu. Yd.	91	
Removal and Disposal of Unsuitable Material for Structures		Cu. Yd.	84	
Concrete Superstructure		Cu. Yd.	122.6	
Reinforcement Bars, Epoxy Coated		Pound	35,890	
Furnishing Metal Shell Piles 14" x 0.250"		Foot	464	
Driving Piles		Foot	464	
Test Pile Metal Shells		Each	2	

E.B. PILE DATA

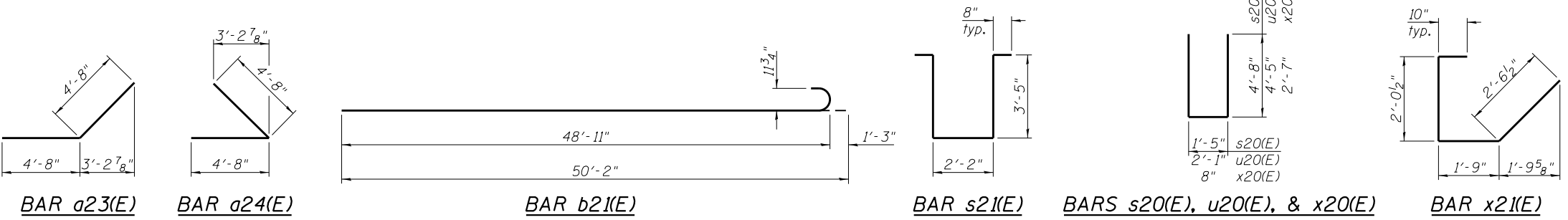
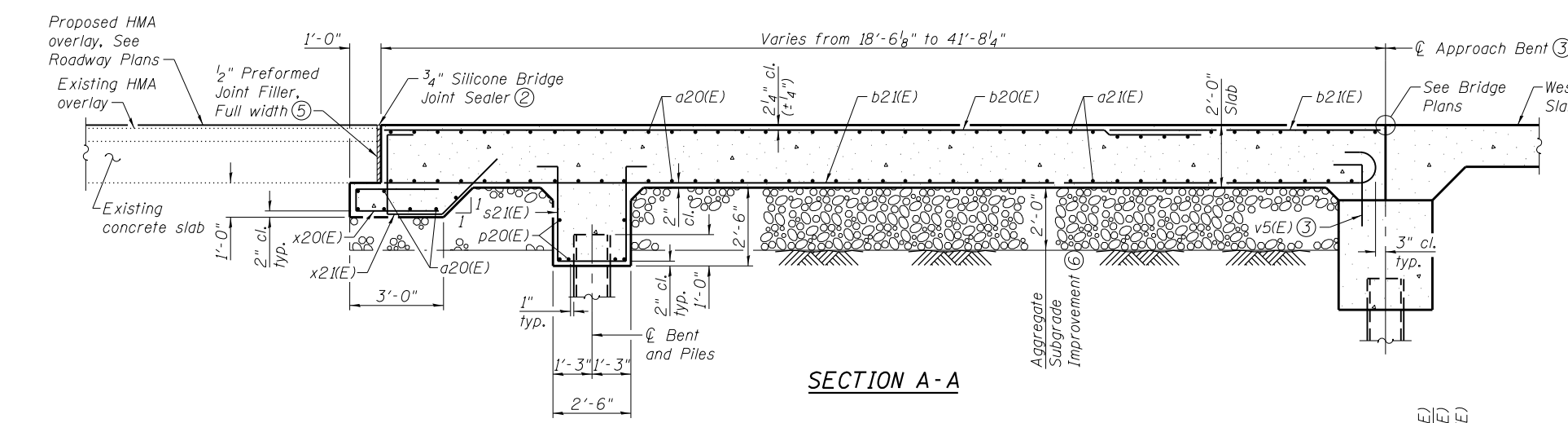
Type: Metal Shell - 14 in. dia x 0.250 in. walls
Nominal Required Bearing: 318 kips
Factored Resistance Available: 175 kips
Est. Length: 60 ft
No. Production Piles: 4
No. Test Piles: 1

W.B. PILE DATA

Type: Metal Shell - 14 in. dia x 0.250 in. walls
Nominal Required Bearing: 318 kips
Factored Resistance Available: 175 kips
Est. Length: 56 ft
No. Production Piles: 4
No. Test Piles: 1

Notes:

- Order b21(E) bars full length. Cut to fit bottom of slab and use remainder of bars in top of slab at east end, lapping with b20(E) bars.
- For Silicone Bridge Joint Sealer requirements, see Special Provisions. Cost included with Concrete Superstructure.
- For Approach Bent and West Bridge Approach Slab details, see Bridge Plans.
- Order a21(E) bars full length. Cut to fit skew and use remainder of bars in opposite face.
- Cost included with Concrete Superstructure.
- Quantity of Aggregate Subgrade Improvement is based on the depth shown and the horizontal limits of the connector pavement. Actual depth to be determined by the Engineer based on conditions encountered in the field. Excavation shall be paid for as Removal and Disposal of Unsuitable Material for Structures. For additional requirements, see Special Provisions.
- Reinforcement bars designated (E) shall be epoxy coated.



<p>DATES ASSOCIATES Engineering & Architecture</p>	<p>USER NAME =</p>	<p>DESIGNED - JAD</p>	<p>REVISED -</p>
	<p>PLOT SCALE =</p>	<p>CHECKED - SUN</p>	<p>REVISED -</p>
	<p>PLOT DATE =</p>	<p>DRAWN - JAD</p>	<p>REVISED -</p>
	<p>DESIGNED - JAD</p>	<p>CHECKED - SUN</p>	<p>REVISED -</p>

**STATE OF ILLINOIS
DEPARTMENT OF TRANSPORTATION**

CONNECTOR PAVEMENT DETAILS

SHEET NO. 2 OF 5 SHEETS

F.A.I. RT.	SECTION	COUNTY	TOTAL SHEETS	SHEET NO.
80	(06-2)BR-3,4	BUREAU	133	89
CONTRACT NO. 66998				
ILLINOIS FED. AID PROJECT				