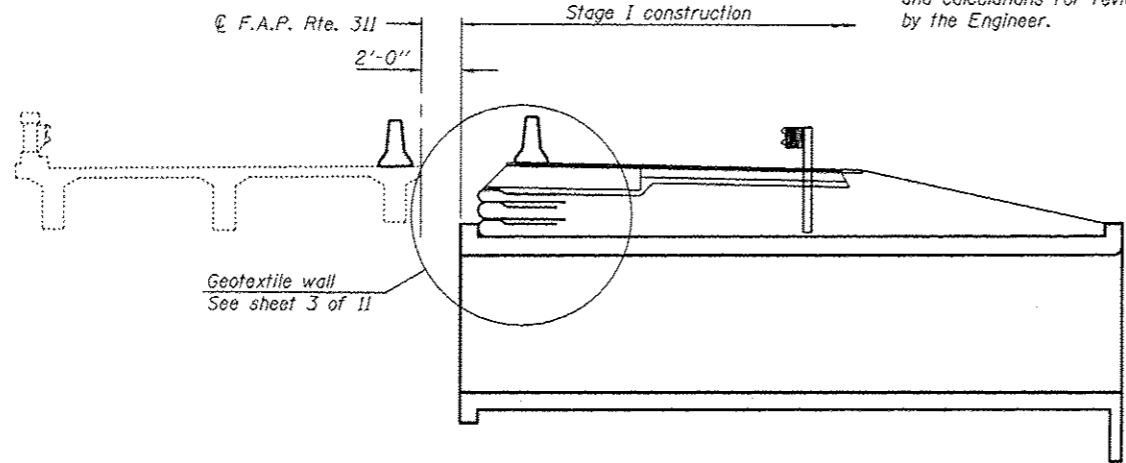
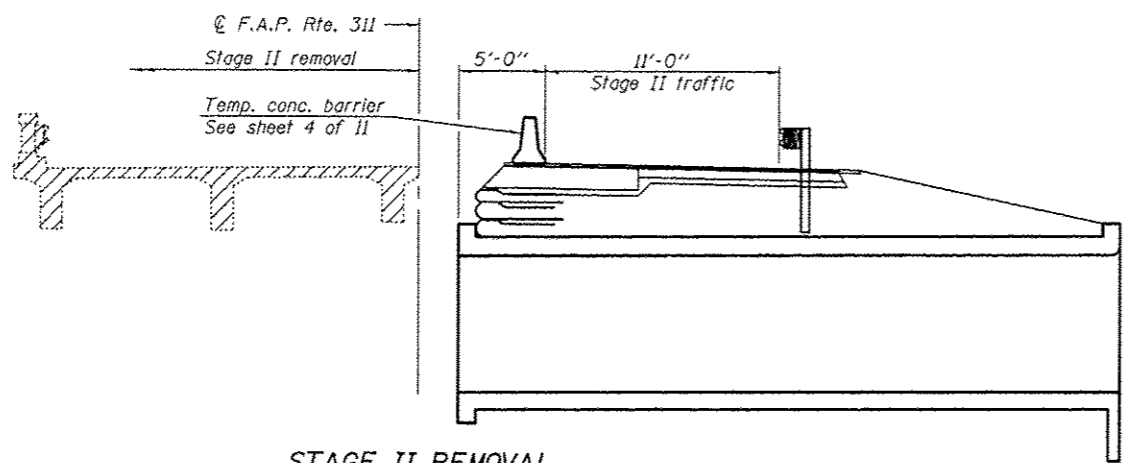


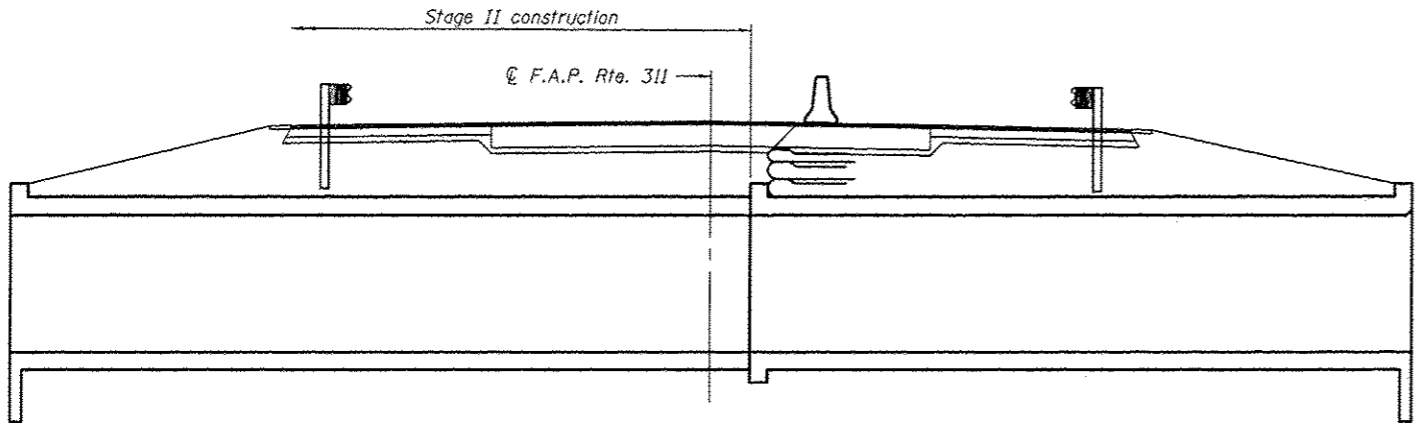
STAGE I REMOVAL



STAGE I CONSTRUCTION

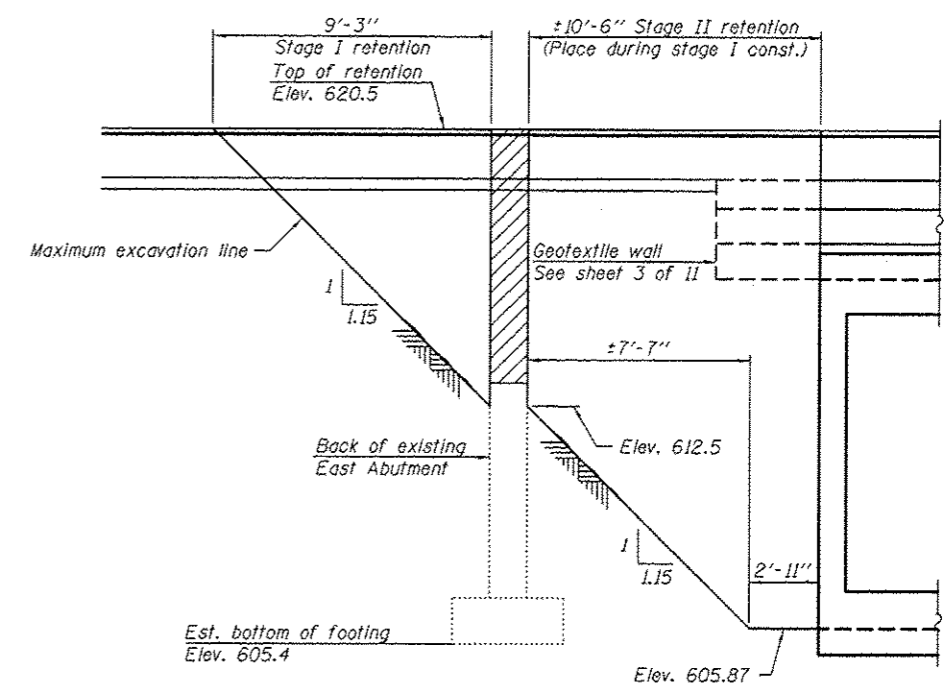


STAGE II REMOVAL



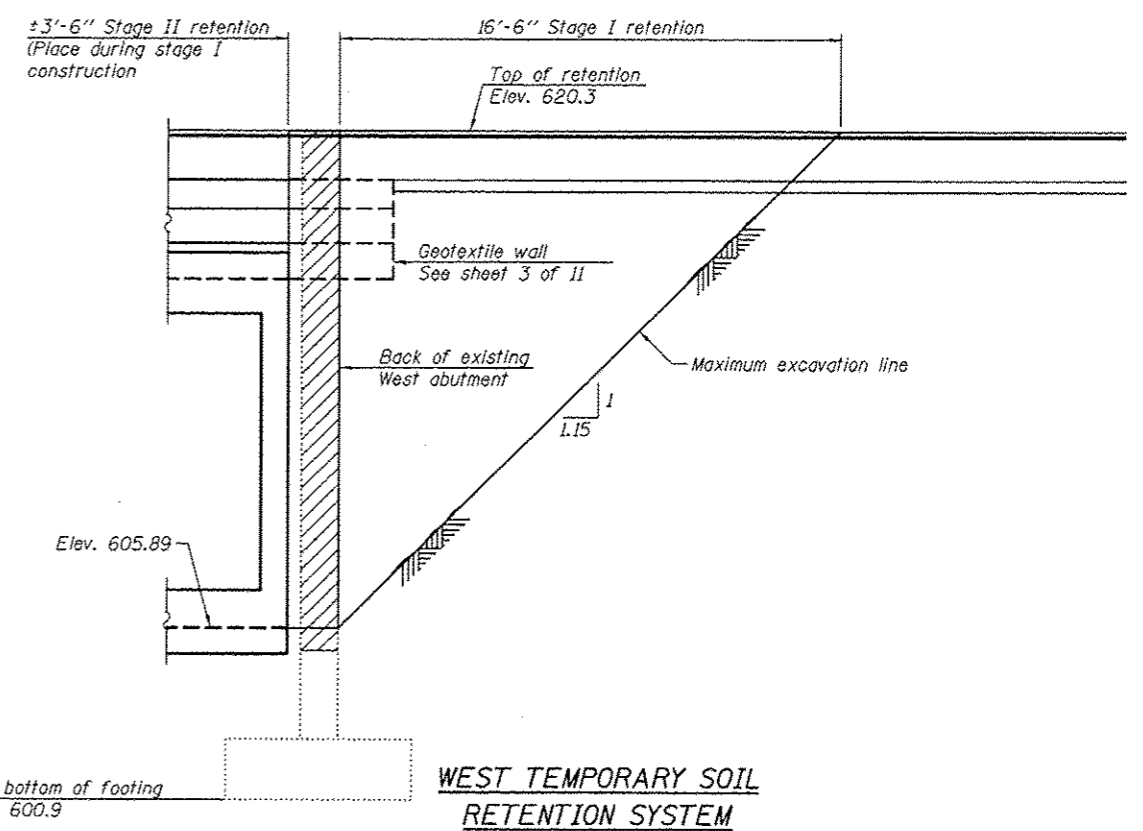
STAGE II CONSTRUCTION

Notes:
 All staging cross sections are looking East.
 Horizontal dimensions in staging cross sections are at right angles to C.F.A.P. Rte. 311 .
 For quantity of Temporary Concrete Barrier, see roadway plans.
 Hatched area indicates Removal of Existing Structures.
 A cantilevered sheet piling design does not appear feasible and additional members or other retention systems may be necessary. The Contractor shall submit a temporary soil retention system design including plan details and calculations for review and acceptance by the Engineer.



EAST TEMPORARY SOIL RETENTION SYSTEM

(Looking South) - Horizontal dimensions for Temporary Soil Retention System are given along C.F.A.P. Rte. 311 .



WEST TEMPORARY SOIL RETENTION SYSTEM

(Looking South) - Horizontal dimensions for Temporary Soil Retention System are given along C.F.A.P. Rte. 311 .

DESIGNED - RAY AHANCHI	EXAMINED - <i>James F. J. [Signature]</i>	DATE - OCTOBER 1, 2013
CHECKED - AL-BARRAE R. SHEBIB	ACTING ENGINEER OF BRIDGE DIVISION	
DRAWN - MICHAEL B. MOSSMAN	PASSED - <i>Carl [Signature]</i>	REVISED -
CHECKED - G.R.A. / A.R.S.	ACTING ENGINEER OF BRIDGES AND STRUCTURES	REVISED -

STAGE CONSTRUCTION DETAILS
STRUCTURE NO. 050 - 2651

SHEET NO. 2 OF 11 SHEETS

Added 10-29-13

F.A.P. RTE.	SECTION	COUNTY	TOTAL SHEETS	SHEET NO.
311	(4)BR-1	LASALLE	38	19
CONTRACT NO. 66B13				
ILLINOIS FED. AID PROJECT				