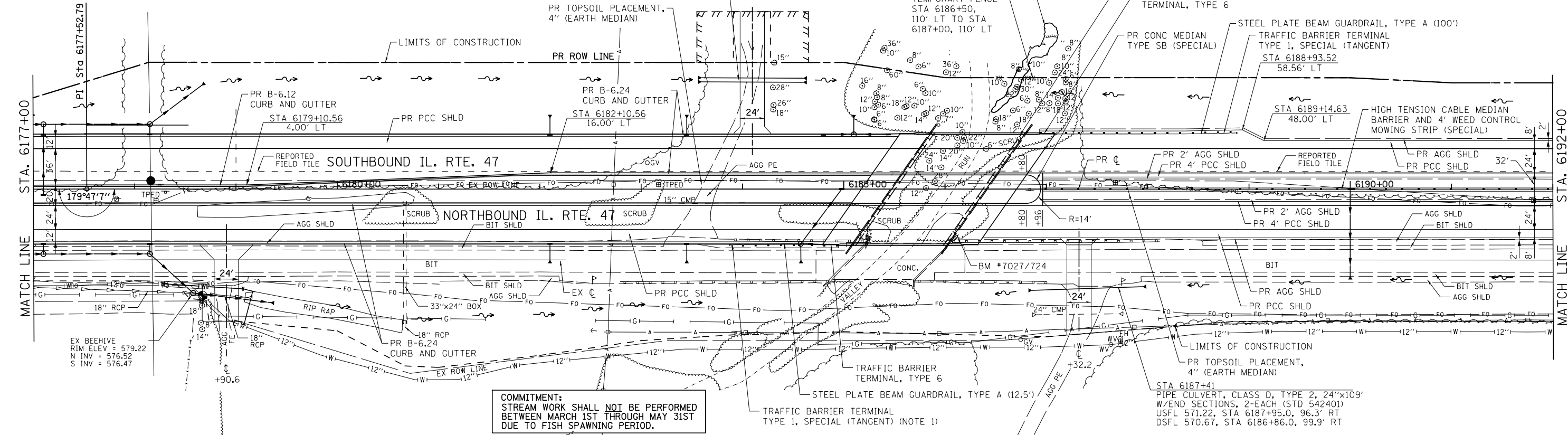


NOTES:

- DEPRESS CURB FOR TRAFFIC BARRIER TERMINAL, TYPE 1, SPECIAL (TANGENT) FROM STA 6183+53 TO STA 6184+13 RT.

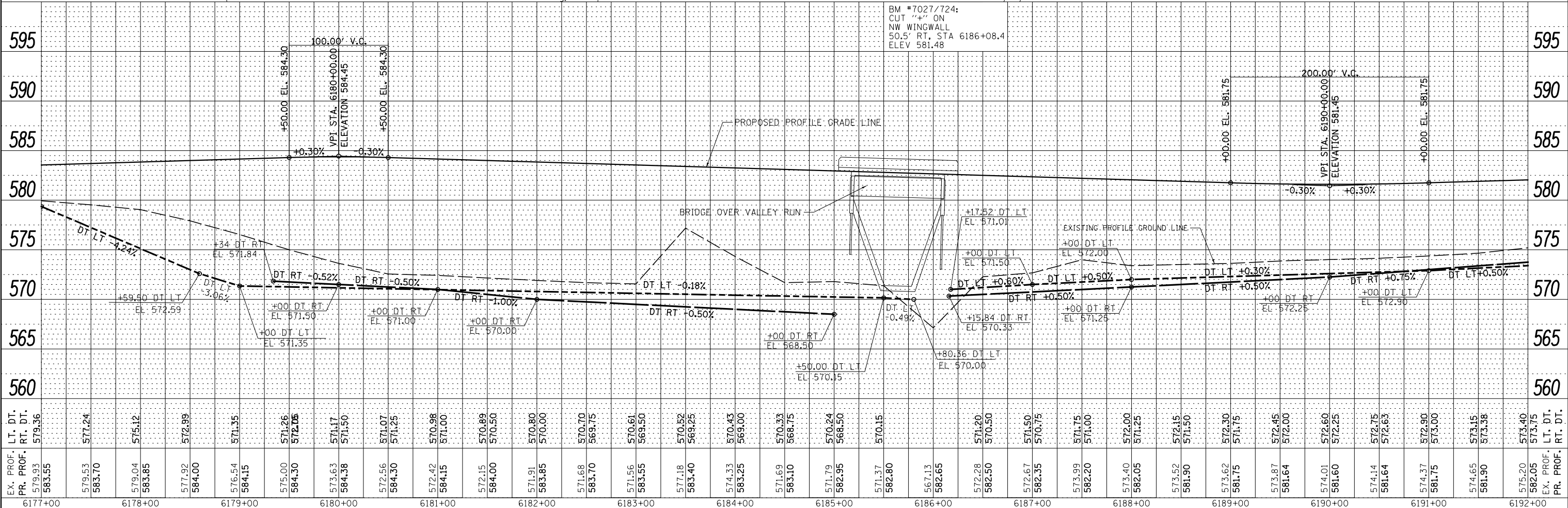
STA 6184+09.7  
 PIPE CULVERT, CLASS D, TYPE 2, 2-36"x100"  
 W/ END SECTIONS, 2-EACH (STD 542401)  
 USFL 570.49, STA 6183+59.9, 107.9' LT  
 DSFL 570.33, STA 6184+59.9, 107.4' LT

STA. 6185+94  
 SKEW 35° LT AHD  
 EXIST SN 032-0088  
 PROP SN 032-0123



DATE	
BY	
PLAN	
SURVEYED	
PLOTTED	
ALIGNED	
CHECKED	
NO. 1	
NO. 2	
NO. 3	
NO. 4	
NO. 5	
NO. 6	
NO. 7	
NO. 8	
NO. 9	
NO. 10	

DATE	
BY	
PROFILE	
SURVEYED	
PLOTTED	
GRADES	
CHECKED	
NO. 1	
NO. 2	
NO. 3	
NO. 4	
NO. 5	
NO. 6	
NO. 7	
NO. 8	
NO. 9	
NO. 10	



FILE NAME =	USER NAME = bdecreane	DESIGNED - HLC	REVISED -
V:\3195\66883 (South Section)\CADD Sheets\0366883-sh1-plnprf-16.dgn		DRAWN - HLC	REVISED -
PLOT SCALE = 100.0000' / in.		CHECKED - CAS	REVISED -
SHT_PLNPRF		DATE - 7/15/2013	REVISED -

STATE OF ILLINOIS  
 DEPARTMENT OF TRANSPORTATION

IL. RTE. 47  
 PLAN & PROFILE

SCALE: H=50 V=5 SHEET 16 OF 34 SHEETS STA. 6177+00 TO STA. 6192+00

F.A.P. RT. 326	SECTION (110)R, BR & BR-1	COUNTY GRUNDY	TOTAL SHEETS 644	SHEET NO. 127
CONTRACT NO. 66B83			ILLINOIS FED. AID PROJECT	