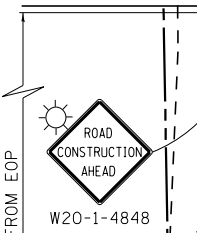
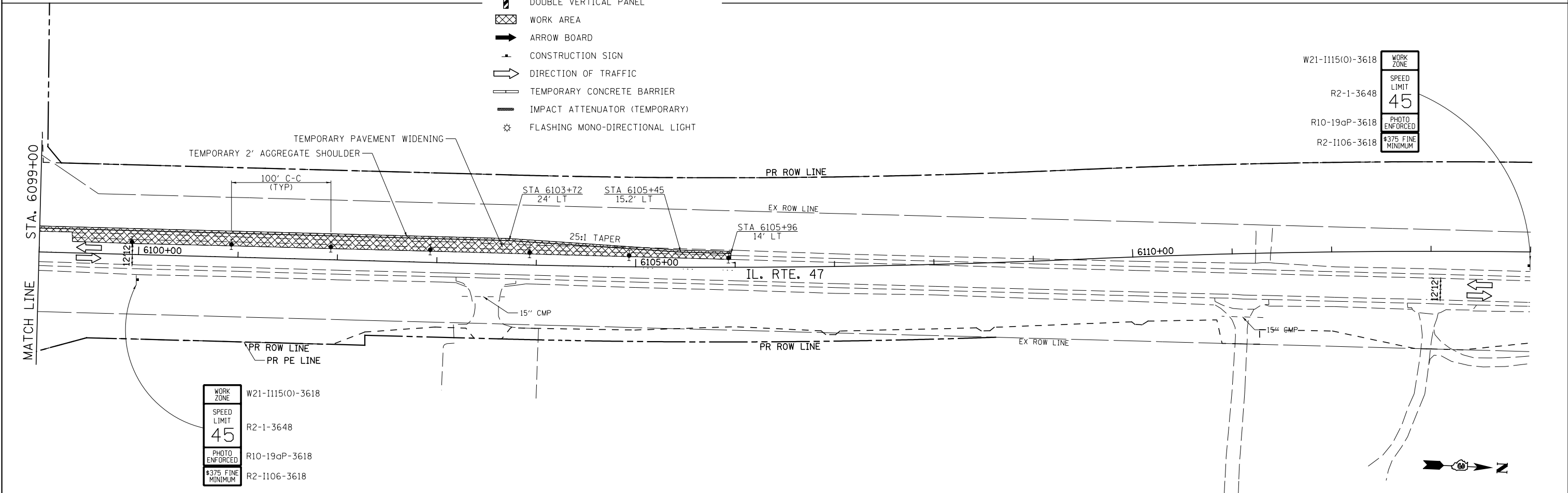


W21-I115(O)-3618	WORK ZONE
R2-1-3648	SPEED LIMIT 45
R10-19aP-3618	PHOTO ENFORCED
R2-I106-3618	\$375 FINE MINIMUM



LEGEND

- DIRECTION INDICATOR BARRICADE WITH STEADY BURN MONDIRECTIONAL LIGHT
- TYPE II BARRICADE, DRUM OR VERTICAL BARRICADE WITH STEADY BURN BI-DIRECTIONAL LIGHT
- TYPE III BARRICADE WITH FLASHING LIGHT (2-EA.)
- DOUBLE VERTICAL PANEL
- WORK AREA
- ARROW BOARD
- CONSTRUCTION SIGN
- DIRECTION OF TRAFFIC
- TEMPORARY CONCRETE BARRIER
- IMPACT ATTENUATOR (TEMPORARY)
- FLASHING MONO-DIRECTIONAL LIGHT



W21-I115(O)-3618	WORK ZONE
R2-1-3648	SPEED LIMIT 45
R10-19aP-3618	PHOTO ENFORCED
R2-I106-3618	\$375 FINE MINIMUM

WORK ZONE	W21-I115(O)-3618
SPEED LIMIT	45
PHOTO ENFORCED	R10-19aP-3618
\$375 FINE MINIMUM	R2-I106-3618

FILE NAME = V:\3195\66883 (South Section)\CADD Sheets\0366883-sht-staging1-3.dgn	USER NAME = bdecreane	DESIGNED - LDZ	REVISED -
PLOT SCALE = 100.0000' / in.	CHECKED - DJD	DRAWN - SRH/RMD	REVISED -
PLOT DATE = 8/6/2013	DATE - 7/15/2013		REVISED -

**STATE OF ILLINOIS
DEPARTMENT OF TRANSPORTATION**

IL. RTE. 47 STAGE 1 CONSTRUCTION & TRAFFIC CONTROL
SCALE: 1"=50' SHEET 3 OF 4 SHEETS STA. 6084+00 TO STA. 6114+00

F.A.P. RTE.	SECTION	COUNTY	TOTAL SHEETS	SHEET NO.
326	(110)R, BR & BR-1	GRUNDY	644	149
CONTRACT NO. 66883				
ILLINOIS FED. AID PROJECT				