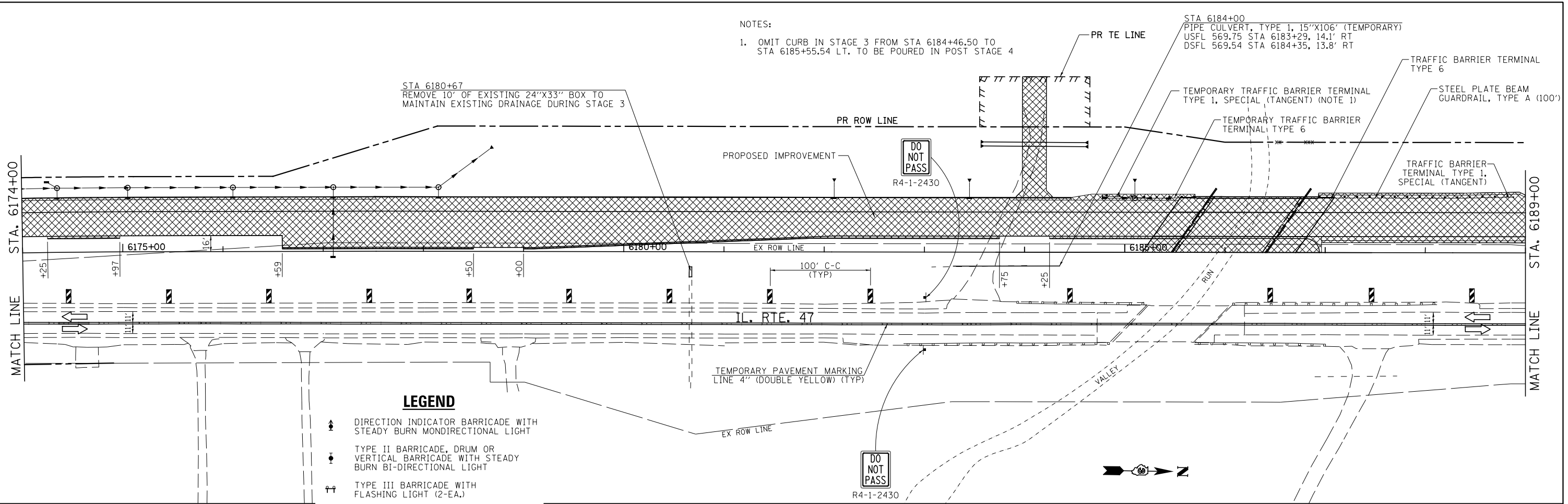


NOTES:

1. OMIT CURB IN STAGE 3 FROM STA 6184+46.50 TO STA 6185+55.54 LT. TO BE POURED IN POST STAGE 4

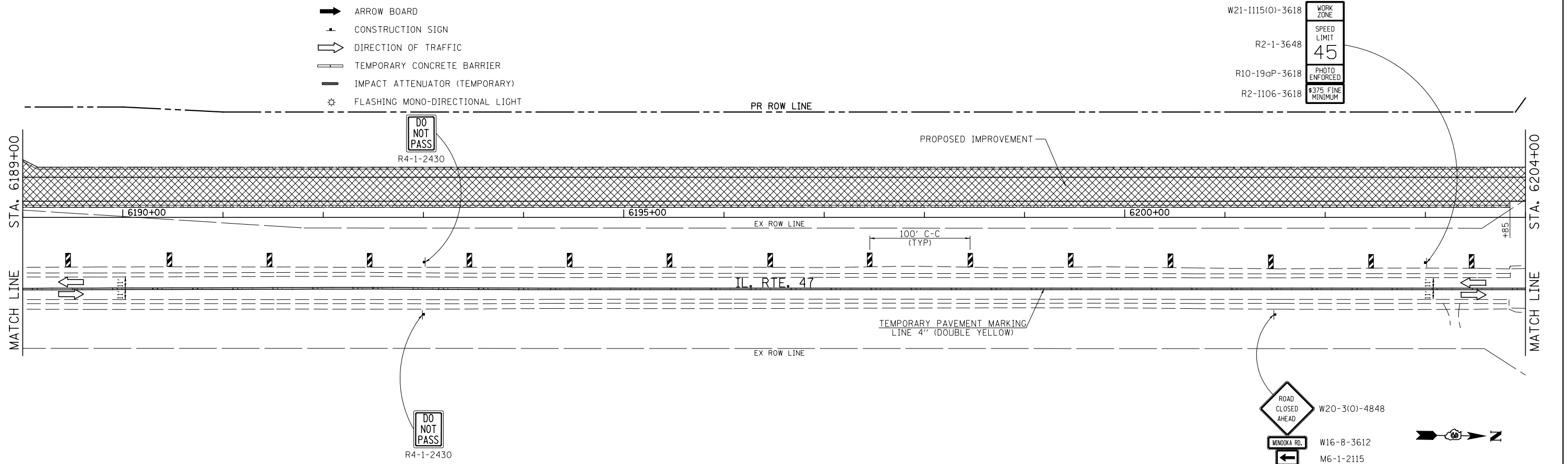
STA 6184+00
 PIPE CULVERT, TYPE 1, 15"X106' (TEMPORARY)
 USFL 569.75 STA 6183+29, 14.1' RT
 DSFL 569.54 STA 6184+35, 13.8' RT



LEGEND

- DIRECTION INDICATOR BARRICADE WITH STEADY BURN MONDIRECTIONAL LIGHT
- TYPE II BARRICADE, DRUM OR VERTICAL BARRICADE WITH STEADY BURN BI-DIRECTIONAL LIGHT
- TYPE III BARRICADE WITH FLASHING LIGHT (2-EA.)
- DOUBLE VERTICAL PANEL
- WORK AREA
- ARROW BOARD
- CONSTRUCTION SIGN
- DIRECTION OF TRAFFIC
- TEMPORARY CONCRETE BARRIER
- IMPACT ATTENUATOR (TEMPORARY)
- FLASHING MONO-DIRECTIONAL LIGHT

W21-1115(0)-3618	WORK ZONE
R2-1-3648	SPEED LIMIT
R10-19aP-3618	45
R2-1106-3618	PHOTO ENFORCED
	\$375 FINE MINIMUM



FILE NAME =	USER NAME = bdecreene	DESIGNED - LDZ	REVISED -
V:\3195\66883 (South Section)\CADD Sheets\0366883-sht-staging3-6.dgn		DRAWN - SRH/RMD	REVISED -
PLOT SCALE = 100.0000' / in.		CHECKED - DJD	REVISED -
SHT.DOUBLE.PLAN	PLOT DATE = 8/6/2013	DATE - 7/15/2013	REVISED -

**STATE OF ILLINOIS
 DEPARTMENT OF TRANSPORTATION**

IL. RTE. 47 STAGE 3 CONSTRUCTION & TRAFFIC CONTROL

SCALE: 1"=50' SHEET 7 OF 10 SHEETS STA. 6174+00 TO STA. 6204+00

F.A.P. RTE.	SECTION	COUNTY	TOTAL SHEETS	SHEET NO.
326	(110)R, BR & BR-1	GRUNDY	644	168
CONTRACT NO. 66B83			ILLINOIS FED. AID PROJECT	