

NE 1/4 OF SEC. 28, T.34 N., R.7 E. OF THE 3RD P.M.

3VC0004

NANCY A. LEAR, et al.
TOTAL HOLDING = 56.280 AC.±
TOTAL R.O.W. REQUIRED = 0.793 AC.±
TRACT 1 = 0.644 AC.±
TRACT 2 = 0.149 AC.±
AREA IN EXIST. R.O.W. = 0.329 AC.±
TRACT 1 = 0.329 AC.±
TRACT 2 = 0.000 AC.±
NET R.O.W. REQUIRED = 0.464 AC.±
REMAINDER = 55.487 AC.±

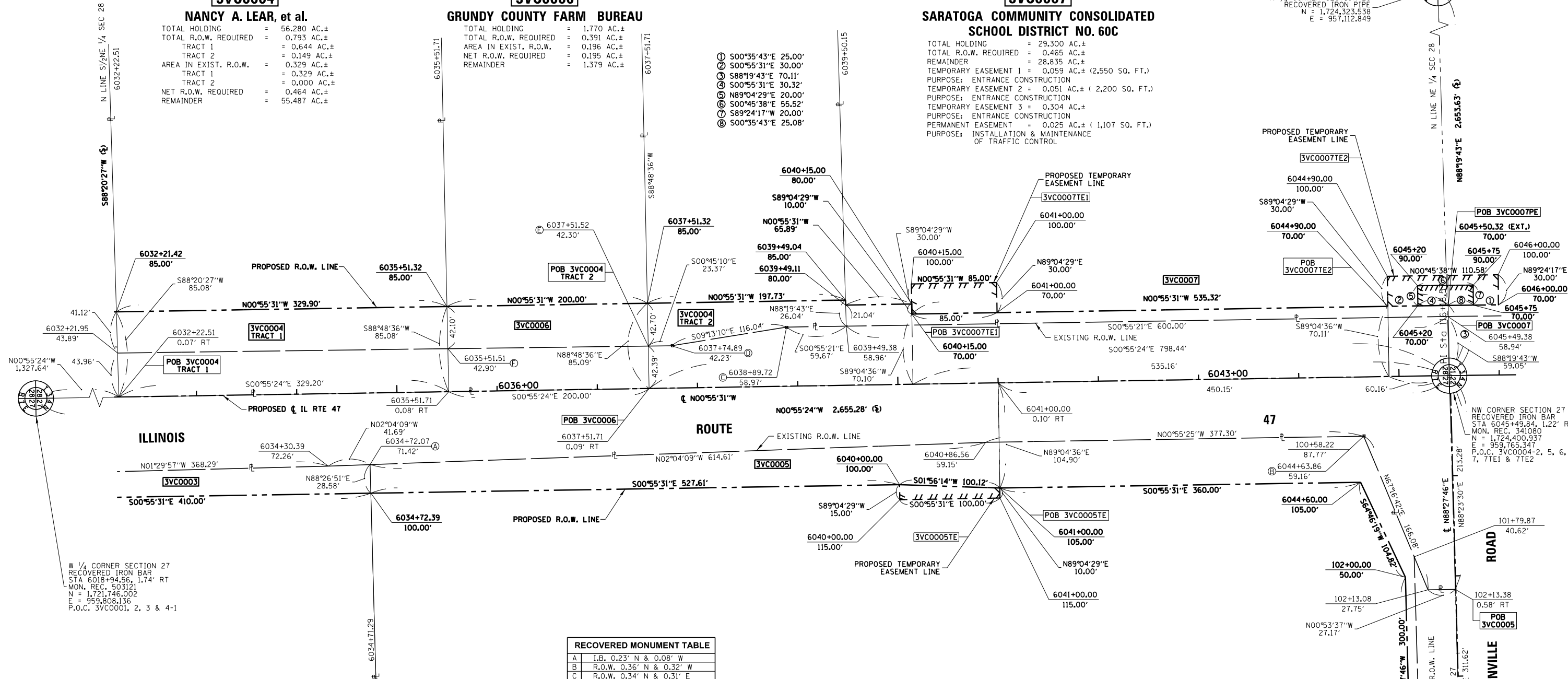
3VC0006

GRUNDY COUNTY FARM BUREAU
TOTAL HOLDING = 1.770 AC.±
TOTAL R.O.W. REQUIRED = 0.391 AC.±
AREA IN EXIST. R.O.W. = 0.196 AC.±
NET R.O.W. REQUIRED = 0.195 AC.±
REMAINDER = 1.379 AC.±

3VC0007

SARATOGA COMMUNITY CONSOLIDATED SCHOOL DISTRICT NO. 60C
TOTAL HOLDING = 29.300 AC.±
TOTAL R.O.W. REQUIRED = 0.465 AC.±
REMAINDER = 28.835 AC.±
TEMPORARY EASEMENT 1 = 0.059 AC.± (2,550 SQ. FT.)
PURPOSE: ENTRANCE CONSTRUCTION
TEMPORARY EASEMENT 2 = 0.051 AC.± ( 2,200 SQ. FT.)
PURPOSE: ENTRANCE CONSTRUCTION
TEMPORARY EASEMENT 3 = 0.304 AC.±
PURPOSE: ENTRANCE CONSTRUCTION
PERMANENT EASEMENT = 0.025 AC.± ( 1,107 SQ. FT.)
PURPOSE: INSTALLATION & MAINTENANCE OF TRAFFIC CONTROL

N 1/4 CORNER SECTION 28
RECOVERED IRON PIPE
N = 1,724,323.538
E = 957,112.849



ILLINOIS

ROUTE

ROAD

GRANVILLE

RECOVERED MONUMENT TABLE
A I.B. 0.23' N & 0.08' W
B R.O.W. 0.36' N & 0.32' W
C R.O.W. 0.34' N & 0.31' E
D R.O.W. 0.73' N & 0.14' W
E I.B. 0.09' W
F I.B. W/CAP 6.92' W

3VC0003

JOHN W. HYNDS, TRUSTEE
TOTAL HOLDING = 3.130 AC.±
TOTAL R.O.W. REQUIRED = 0.246 AC.±
REMAINDER = 2.884 AC.±

3VC0005

JOHN W. HYNDS, TRUSTEE, et al.
TOTAL HOLDING = 47.244 AC.±
TOTAL R.O.W. REQUIRED = 1.302 AC.±
AREA IN EXIST. R.O.W. = 0.291 AC.±
NET R.O.W. REQUIRED = 1.011 AC.±
REMAINDER = 45.942 AC.±
TEMPORARY EASEMENT = 0.029 AC.± (1,250 SQ. FT.)
PURPOSE: ENTRANCE CONSTRUCTION

I DARRELL A. POUNDSTONE, HEREBY CERTIFY THAT I AM A PROFESSIONAL LAND SURVEYOR OF THE STATE OF ILLINOIS, THAT THE SURVEY OF PROPOSED F.A.P. 326 (ILLINOIS ROUTE 47) WAS MADE BY RENWICK & ASSOCIATES, INC. UNDER MY DIRECTION, AND THAT THE SURVEY IS TRUE AND COMPLETE AS SHOWN TO THE BEST OF MY KNOWLEDGE AND BELIEF, THAT ALL MONUMENTS AND MARKS ARE OF THE CHARACTER AND OCCUPY THE POSITION SHOWN THEREON, AND ARE SUFFICIENT TO ENABLE THE SURVEY TO BE RETRACED. THIS PROFESSIONAL SERVICE CONFORMS TO THE CURRENT ILLINOIS MINIMUM STANDARDS FOR A BOUNDARY SURVEY.

DATE: ILLINOIS PROFESSIONAL LAND SURVEYOR NO. 3485
SURVEY BOOK NO. 11-30-2012
EXPIRATION DATE

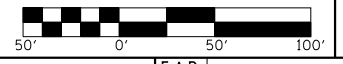
NW 1/4 OF SEC. 27, T.34 N., R.7 E. OF THE 3RD P.M.

STATE OF ILLINOIS DEPARTMENT OF TRANSPORTATION

RIGHT OF WAY PLANS

PROJECT: JOB NO. R-93-003-0B
SHEET NO. 3 OF 36 SHEETS
STA. 6032+21.87 TO STA. 6045+49.84

Table with columns: F.A.P. RTE., SECTION, COUNTY, TOTAL SHEETS, SHEET NO., CONTRACT NO. Values include (110)R, BR & BR-1, GRUNDY & LASALLE, 644, 240, 668B3.



Renwick & Associates, Inc. Professional Engineers & Land Surveyors
1304 Genl'l Circle, Suite 4 - Ottawa, IL 61350

Table with columns: FILE NAME, USER NAME, DESIGNED, DRAWN, PLOT SCALE, PLOT DATE. Values include MITCHELL, 1" = 50', JULY 13, 2012.

Table with columns: DESIGNED, DRAWN, CHECKED, DATE. Values include 11/27/12 Rev. Parcel 3VC0005, 2/1/13 Rev. Parcel 3VC0007 MKB, 3/28/13 Rev. Parcel 3VC0007PE JJC.

Table with columns: REVISED. Values include 11/27/12 Rev. Parcel 3VC0005, 2/1/13 Rev. Parcel 3VC0007 MKB, 3/28/13 Rev. Parcel 3VC0007PE JJC.